

ORDER**SECTION 35, THE MINING ACT, R.S.O. 1990****ORDER NO. O-L-50/17**

The SURFACE and MINING RIGHTS of the area outlined in red on the attached sketch, in the Township of Morrisette (G-3217), Larder Lake Mining Division, containing 64 hectares, more or less, are hereby REOPENED to prospecting, staking out, sale or lease.

This area was originally withdrawn by Order W-L-47/17, while the Ministry determined the status of the land.

This order comes into effect upon signing.

Date: October 6, 2017

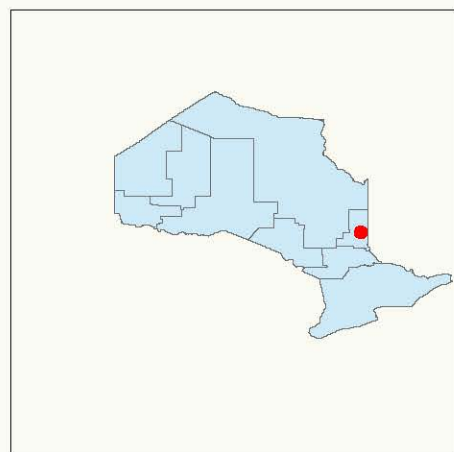
Time: 10:01a.m.

ORIGINAL SIGNED BY MARC BILODEAU FOR
Patrick Brown, A/Provincial Mining Recorder

Mining Lands Section
Mines and Minerals Division

Copies:
Senior Manager, Mining Lands Section, MNDM, Sudbury
Provincial Mining Recorder, MNDM, Sudbury
Provincial Lands Specialist - CLR

O-L-50/17
Morrisette Township (G-3217)
Larder Lake Mining Divisions

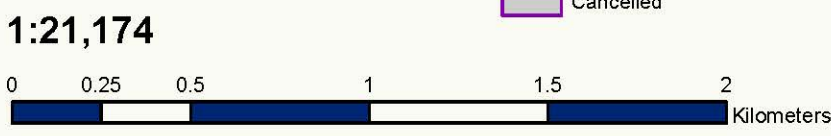
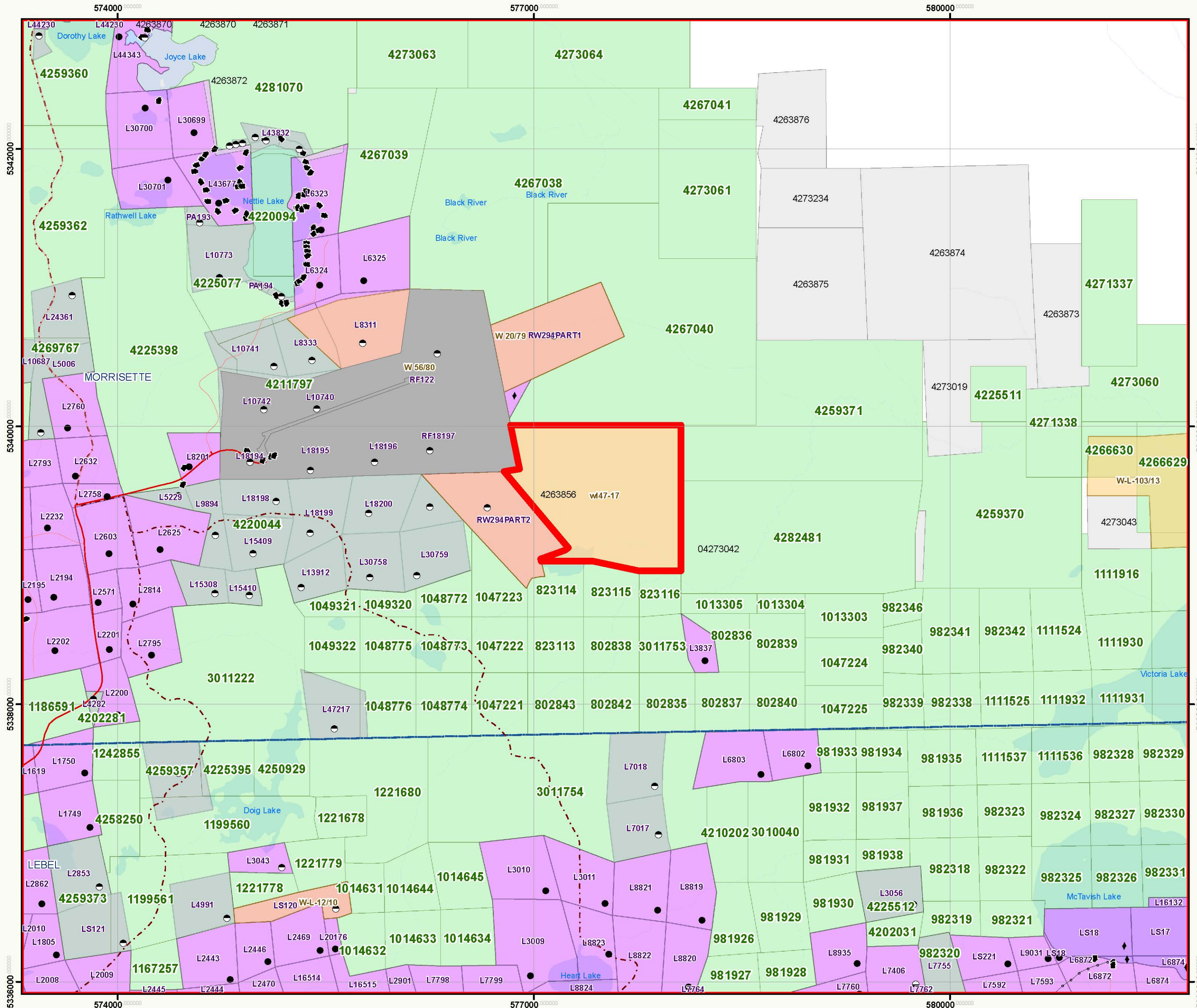


Base Features

- Area to be Reopened
- Tower
- Work Camp
- Utility Site
- MNM Administrative Boundaries
- Lot Fabric Improved
- Utility Line - Hydro Line**
 - Transmission Line
 - Ligne de transmission
 - Pipeline
 - Pipeline
- Road Segment**
 - Other Existing Roads
 - Autres routes actuelles
 - Primary
 - Route principale
 - Highway
 - Autoroute
 - Trail Segment
 - Railway Segment
- Airports**
 - Airports
 - Airport Airstrip
 - Airport Official
- Federal Protected Area**
 - Federal Protected Area
 - Federal Land Other
 - Indian Reserve
- Waterbodies**
 - River / Stream
 - Waterbody
- Provincial Park Regulated**
 - Provincial Park Regulated
 - Conservation Reserve Regulated

Mining Lands Features

- Dispositions Symbols**
 - Freehold Patent, S+M
 - Freehold Patent, SRO
 - Freehold Patent, MRO
 - Leasehold Patent, S+M
 - Leasehold Patent, SRO
 - Leasehold Patent, MRO
 - Licence of Occupation, S+M
 - Licence of Occupation, SRO
 - Licence of Occupation, MRO
 - Licence of Occupation, not specified
 - Tower
 - Camp
 - Unknown
- MNDM Alienations**
 - Active, Withdrawal
 - Active, Notice
 - Cancelled, Withdrawal
 - Cancelled, Notice
- MNDM Mining Claims**
 - Active
 - Cancelled
 - Pending
- MNDM Dispositions**
 - Active
 - Cancelled
- Other Symbols**
 - OIC Order in Council
 - LUP Land Use Permit
 - WPLA WPLA



This map should not be relied on as a precise indicator of routes or locations, nor as a guide to navigation. The Ontario Ministry of Natural Resources (OMNR) shall not be liable in any way for the use of, or reliance upon, this map or any information on this map.

Il ne faut pas présumer que cette carte indique précisément les voies et les lieux, ni s'en servir comme guide à la navigation. Le ministère des Richesses naturelles de l'Ontario (MRN) n'assume aucune responsabilité quelle qu'elle soit relativement à l'utilisation de cette carte ou de la confiance qui serait mise en celle-ci.