

ORDER

SECTION 35, THE MINING ACT, R.S.O. 1990

ORDER NO. O-ONT-131/24

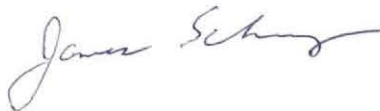
The SURFACE RIGHTS and MINING RIGHTS of the area outlined in red on the attached sketch, situated in the Aurora and Edwards Townships, Larder Lake and Porcupine Mining Divisions, containing 4549.04 hectares more or less, were withdrawn from prospecting, mining claim registration, sale and lease by Order W-ONT-151/24 while the Ministry determined the status of the lands.

Withdrawal Order W-ONT-151/24 is hereby revoked and the lands are REOPENED for prospecting, mining claim registration, sale and lease, unless the lands are otherwise not open for these activities under any other provision of the Mining Act.

This order comes into effect upon signing.

Date: October 17, 2024

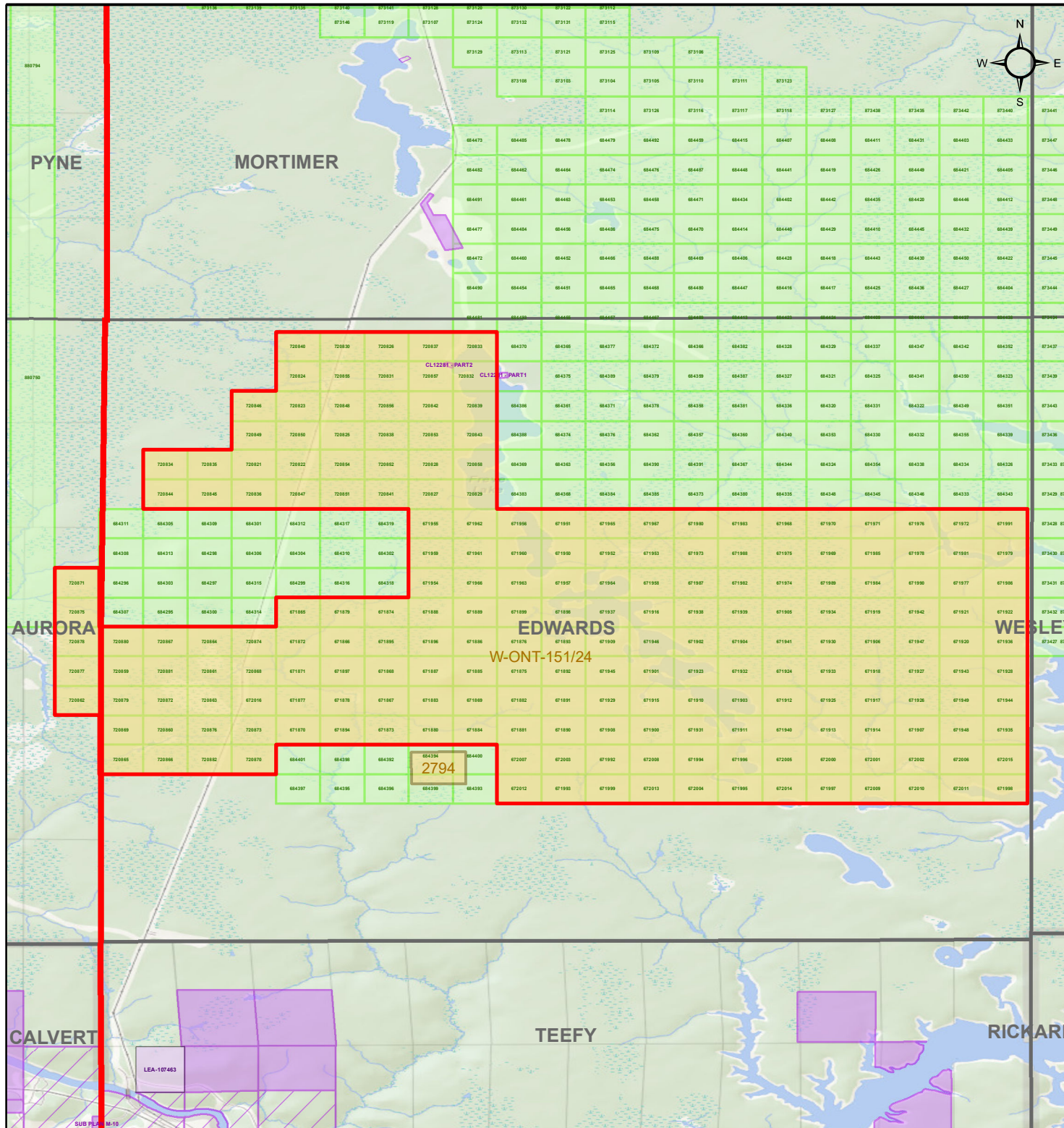
Time: 12:52 pm



James Schwyer, Provincial Mining Recorder
Mining Lands Section
Mines and Minerals Division

Copies:

Senior Manager, Mining Lands Section, MINES, Sudbury
Provincial Mining Recorder, MINES, Sudbury
Provincial Lands Specialist – CLR



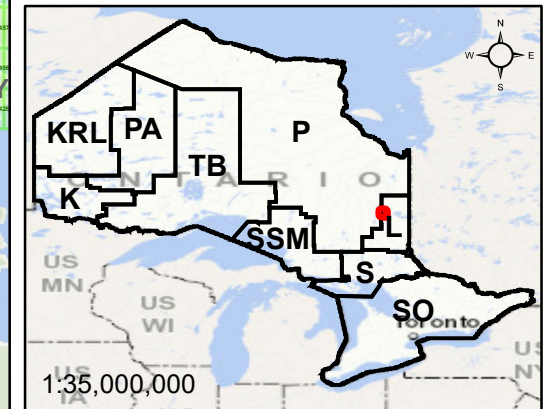
O-ONT-131/24

Aurora and Edwards
Townships
Larder Lake and Porcupine
Mining Divisions

- Withdrawal
- Notice
- Order-in-Council
- Cell Claims

Land Tenure

- Surface Rights
- Mining Rights
- Mining and Surface Rights



Scale: 1:85,936
Projection: CGS NAD 1983 (CSRS)