

ORDER

SECTION 35, THE MINING ACT, R.S.O. 1990

ORDER NO. O-ONT-145/24

The SURFACE RIGHTS and MINING RIGHTS of the area outlined in red on the attached sketch, situated in the Townships of Abrey, Ashmore, Bain, Bickle, Chipman, Clavet, Coltham, Croll, Daley, Errington, Fernow, Fulford, Goodwin, Houck, Kohler, McKelvie, McQuesten, O'Meara and Oakes and in the Areas of Bicknell Lake, Burrows Lake, Castlebar Lake, Eastside Lake, Isobel Lake, Klotz Lake, Laponen Lake, Lukinto Lake, McBean Lake, Porcupine and Thunder Bay Mining Divisions, containing 106,059.2 hectares more or less, were withdrawn from prospecting, mining claim registration, sale and lease by Orders W-TB-110/22, W-TB-10/23, W-TB-23/23, W-TB-26/23, W-TB-27/23, W-TB-28/23, W-TB-29/23, W-TB-37/23, W-TB-76/23, W-TB-80/23, W-TB-84/23, W-TB-92/23, W-TB-134/23, W-TB-135/23, W-TB-137/23, W-TB-07/24, W-TB-26/24, W-TB-35/24, W-TB-57/24, W-TB-131/24, W-TB-132/24, W-TB-138/24, W-TB-149/24 and W-TB-150/24 while the Ministry determined the status of the lands.

Withdrawal Orders W-TB-110/22, W-TB-10/23, W-TB-23/23, W-TB-26/23, W-TB-27/23, W-TB-28/23, W-TB-29/23, W-TB-37/23, W-TB-76/23, W-TB-80/23, W-TB-84/23, W-TB-92/23, W-TB-134/23, W-TB-135/23, W-TB-137/23, W-TB-07/24, W-TB-26/24, W-TB-35/24, W-TB-57/24, W-TB-131/24, W-TB-132/24, W-TB-138/24, W-TB-149/24 and W-TB-150/24 is hereby revoked and the lands are REOPENED for prospecting, mining claim registration, sale and lease, unless the lands are otherwise not open for these activities under any other provision of the Mining Act.

This order comes into effect upon signing.

Date: December 4, 2024

Time: 6:25 a.m.



For Afsana Qureshi, Assistant Deputy Minister
Mines and Minerals Division

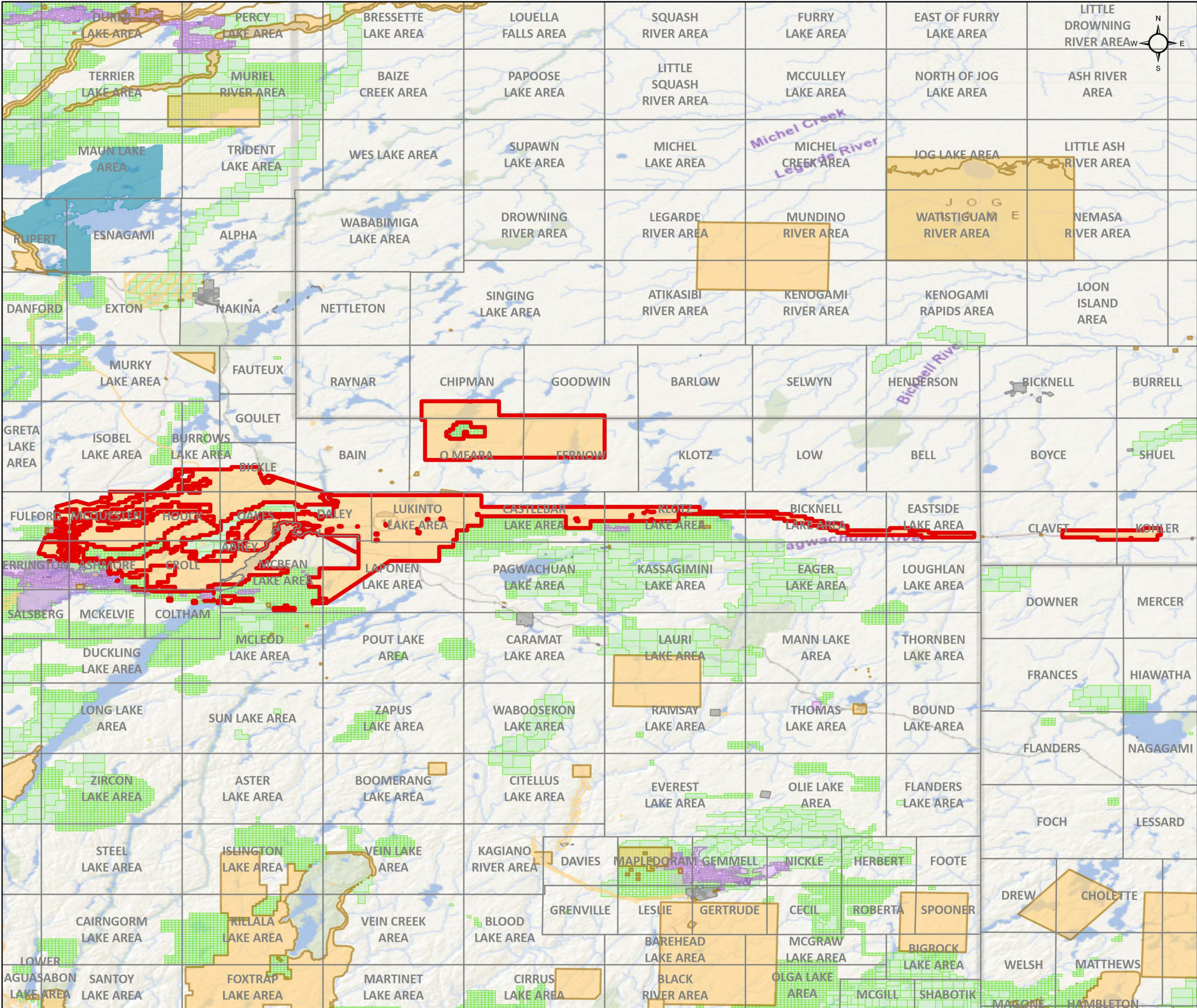


Copies:

Senior Manager, Mining Lands Section, MINES, Sudbury

Provincial Mining Recorder, MINES, Sudbury

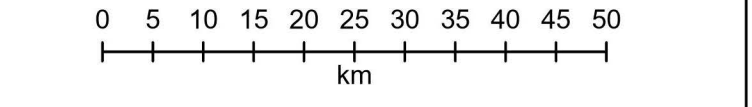
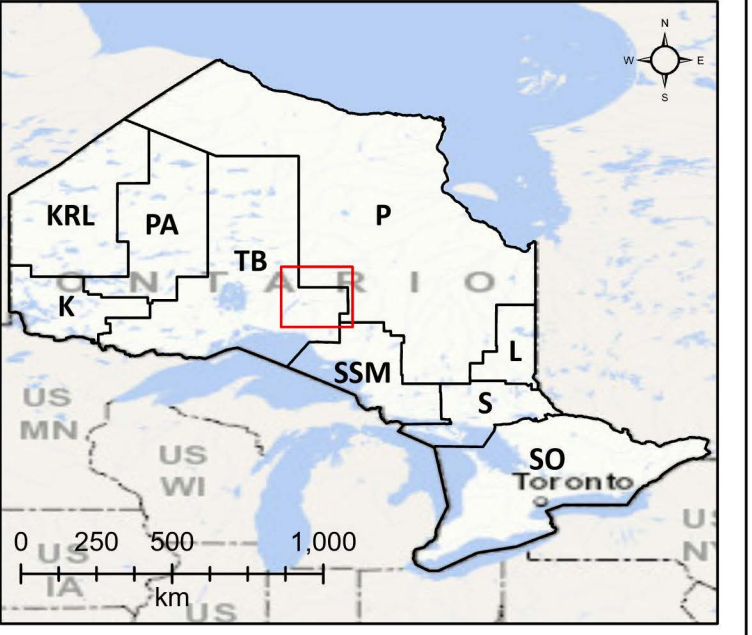
Provincial Lands Specialist – CLR



O-ONT-145/24

Multiple Townships and Areas
Thunder Bay and Porcupine Mining Divisions

- Re-Opening Area**
- Withdrawal (Mining Only, Mining & Surface)
 - Withdrawal (Surface Only)
 - Order-in-Council
 - Mining Claims
- Mining Land Tenure**
- Mining Land Tenure (Surface Only)
 - Mining Land Tenure (Mining Only)
 - Mining Land Tenure (Mining & Surface)
- Non-Mining Land Tenure**
- Non-Mining Land Tenure (Surface Only)
 - Non-Mining Land Tenure (Mining & Surface)



Scale: 1:750,000
Date: 2024-11-15
Projection: NAD 1983 CSRS