

**ORDER**

**SECTION 35, THE MINING ACT, R.S.O. 1990**

**ORDER NO. O-ONT-149/24**

The SURFACE RIGHTS and MINING RIGHTS of the area outlined in red on the attached sketch, situated in the Townships of Bond, Bowman, Hislop, Sheraton and Thomas, Larder Lake and Porcupine Mining Divisions, containing 2311.87 hectares more or less, were withdrawn from prospecting, mining claim registration, sale and lease by Order W-ONT-135/24 while the Ministry determined the status of the lands.

Withdrawal Order W-ONT-135/24 is hereby revoked and the lands are REOPENED for prospecting, mining claim registration, sale and lease, unless the lands are otherwise not open for these activities under any other provision of the Mining Act.

This order comes into effect on Tuesday, December 17, 2024, at 10:00 a.m. eastern standard time or eastern daylight savings time, as the case may be.



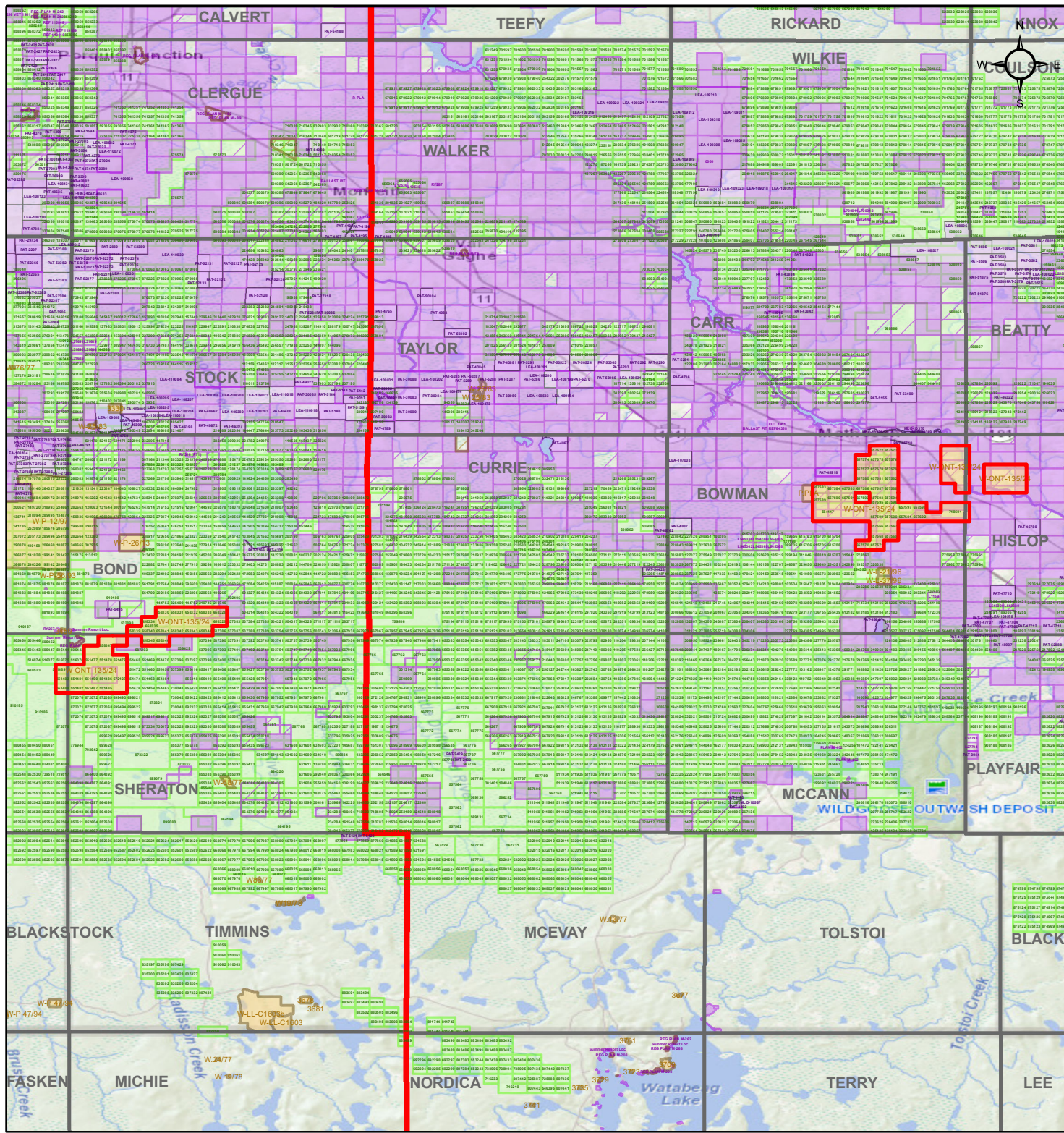
---

James Schwyer, Provincial Mining Recorder  
Mining Lands Section  
Mines and Minerals Division

**Copies:**

Senior Manager, Mining Lands Section, MINES, Sudbury  
Provincial Mining Recorder, MINES, Sudbury  
Provincial Lands Specialist – CLR





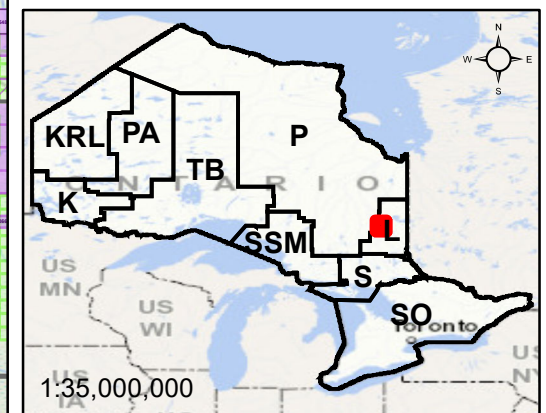
# O-ONT-149/24

Hislop, Bowman, Bond,  
Sheraton and Thomas Townships  
Porcupine and Larder Lake Mining

- Withdrawal
- Notice
- Order-in-Council
- Cell Claims

## Land Tenure

- Surface Rights
- Mining Rights
- Mining and Surface Rights



Scale: 1:266,000  
Projection: CGS NAD 1983 (CSRS)