

**ORDER**

**SECTION 35, THE MINING ACT, R.S.O. 1990**

**ORDER NO. O-ONT-18/25**

The SURFACE RIGHTS and MINING RIGHTS of the area outlined in red on the attached sketch, situated in the townships of Bond, Currie, Macklem, Sheraton and Thomas, Larder Lake and Porcupine Mining Divisions, containing 3318.02 hectares more or less, were withdrawn from prospecting, mining claim registration, sale and lease by Order W-ONT-187/24 while the Ministry determined the status of the lands.

Withdrawal Order W-ONT-187/24 is hereby revoked and the lands are REOPENED for prospecting, mining claim registration, sale and lease, unless the lands are otherwise not open for these activities under any other provision of the Mining Act.

This order comes into effect upon signing.

Date: January 31, 2025

Time: 2:55 pm



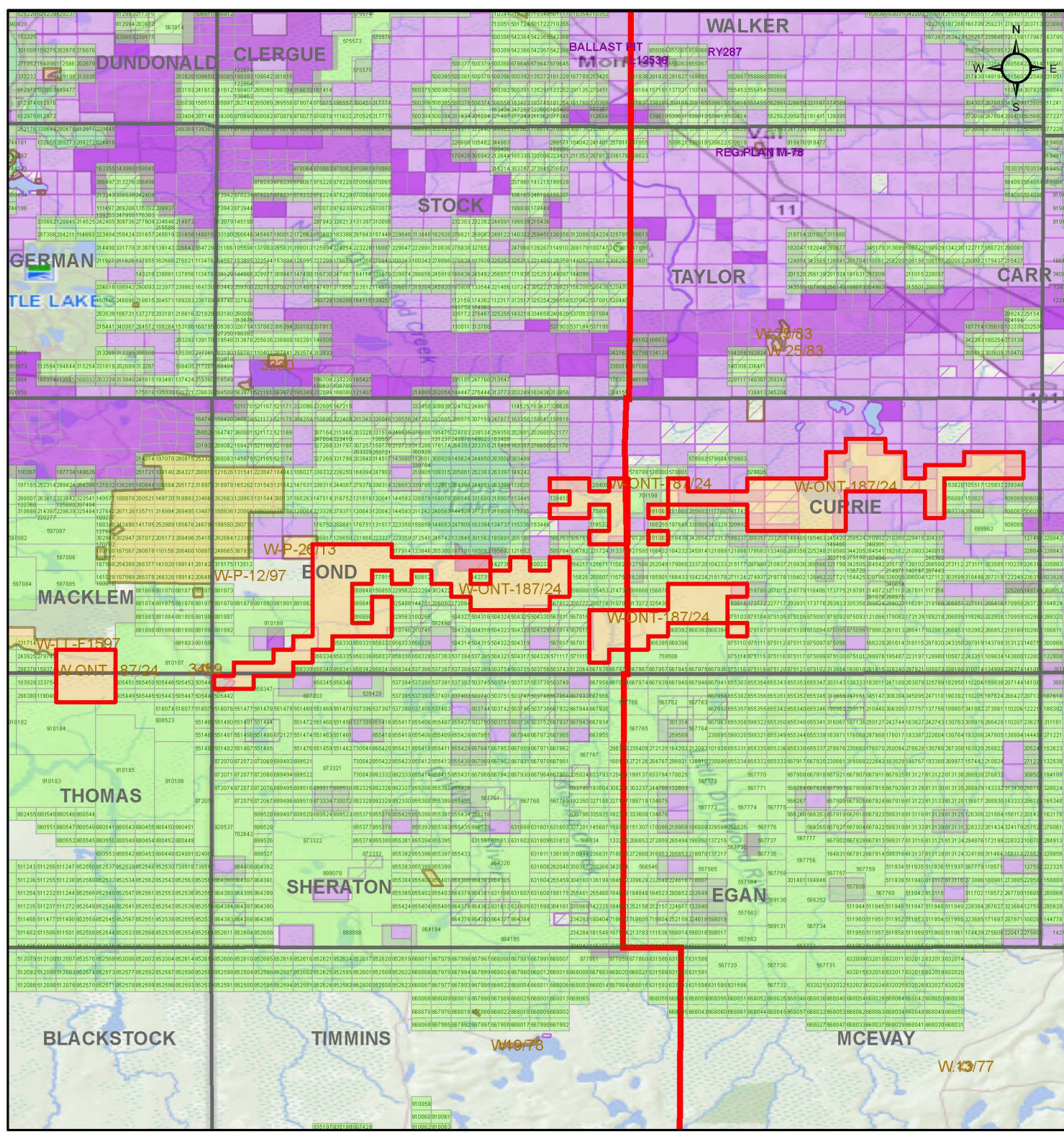
---

James Schwyer, Provincial Mining Recorder  
Mining Lands Section  
Mines and Minerals Division

**Copies:**

Senior Manager, Mining Lands Section, MINES, Sudbury  
Provincial Mining Recorder, MINES, Sudbury  
Provincial Lands Specialist – CLR

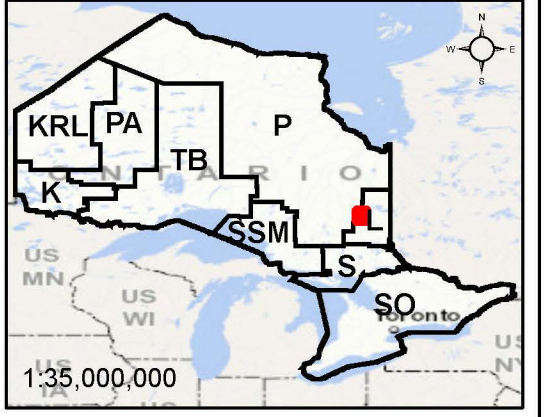




# O-ONT-18/25

Macklem, Thomas, Bond,  
Sheraton & Currie Townships  
Porcupine & Larder Lake  
Mining Division

- Withdrawal
  - Notice
  - Order-in-Council
  - Cell Claims
- Land Tenure**
- Surface Rights
  - Mining Rights
  - Mining and Surface Rights



Scale: 1:191,402  
Projection: CGS NAD 1983 (CSRS)

