

ORDER

SECTION 35, THE MINING ACT, R.S.O. 1990

ORDER NO. O-ONT-77/24

The SURFACE RIGHTS and MINING RIGHTS of the area outlined in red on the attached sketch, situated in the Townships of Cecil, Copenace, Echum and Nickle, Sault Ste Marie and Thunder Bay Mining Divisions, containing 2052.08 hectares more or less, were withdrawn from prospecting, mining claim registration, sale and lease by Order W-ONT-62/24 while the Ministry determined the status of the lands.

Withdrawal Order W-ONT-62/24 is hereby revoked and the lands are REOPENED for prospecting, mining claim registration, sale and lease, unless the lands are otherwise not open for these activities under any other provision of the Mining Act.

This order comes into effect upon signing.



Date: July 17, 2024

James Schwyer, Provincial Mining Recorder
Mining Lands Section
Mines and Minerals Division

Time: 10:40 am

Copies:

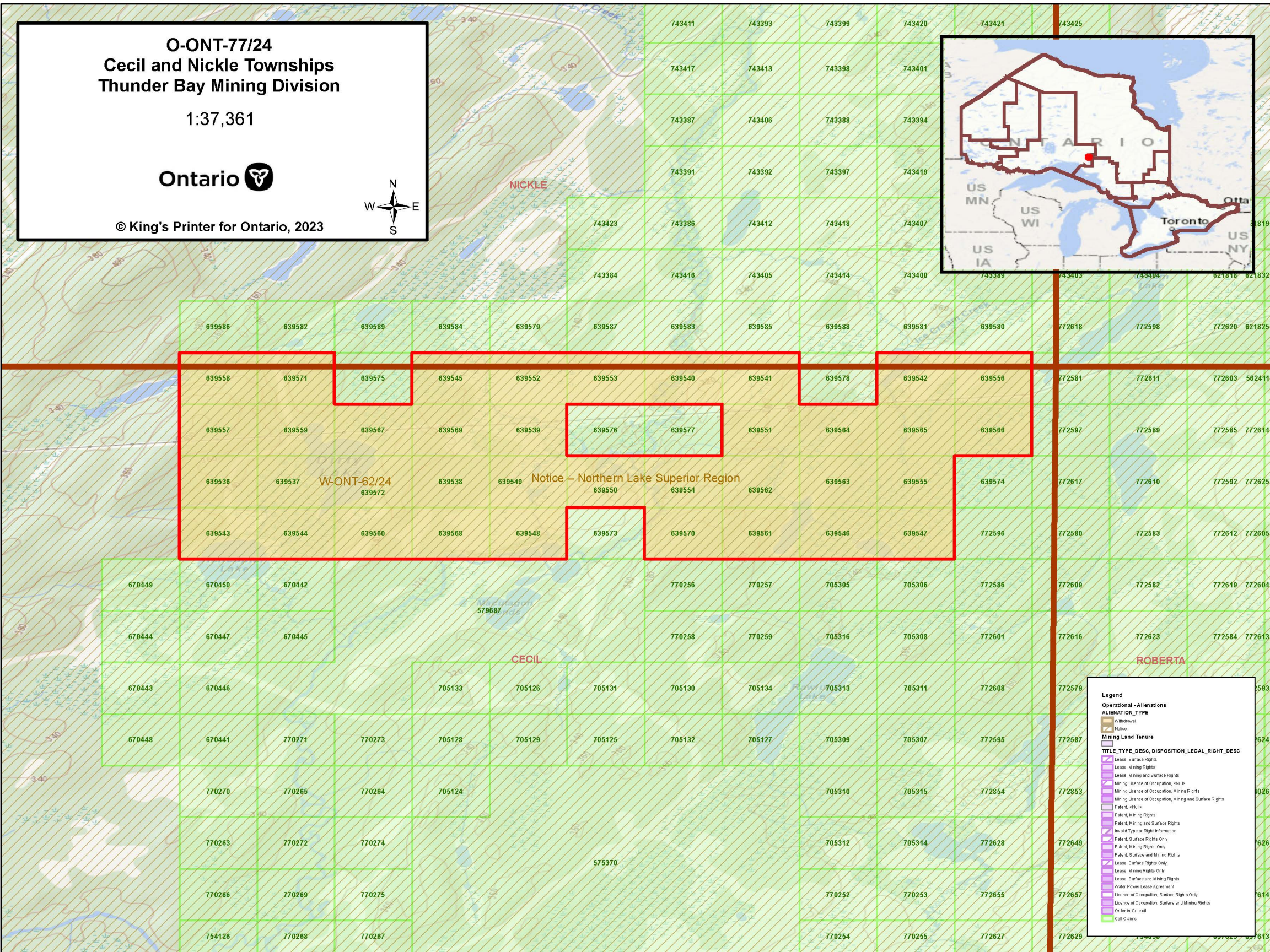
Senior Manager, Mining Lands Section, MINES, Sudbury
Provincial Mining Recorder, MINES, Sudbury
Provincial Lands Specialist – CLR

O-ONT-77/24
Cecil and Nickle Townships
Thunder Bay Mining Division

1:37,361



© King's Printer for Ontario, 2023



Legend

Operational - Aliens

ALIENATION TYPE

- Withdrawal
- Notice

Mining Land Tenure

TITLE TYPE_DESC, DISPOSITION_LEGAL_RIGHT_DESC

- Lease, Surface Rights
- Lease, Mining Rights
- Lease, Mining and Surface Rights
- Mining Licence of Occupation, <hull>
- Mining Licence of Occupation, Mining Rights
- Mining Licence of Occupation, Mining and Surface Rights
- Patent, <hull>
- Patent, Mining Rights
- Patent, Mining and Surface Rights
- Invalid Type or Right Information
- Patent, Surface Rights Only
- Patent, Mining Rights Only
- Patent, Surface and Mining Rights
- Lease, Surface Rights Only
- Lease, Mining Rights Only
- Lease, Surface and Mining Rights
- Water Power Lease Agreement
- Licence of Occupation, Surface Rights Only
- Licence of Occupation, Surface and Mining Rights
- Order-in-Council
- Cell Claims


O-ONT-77/24

Copenace and Echum Townships

Sault Ste. Marie Mining Division

1:41,621

Ontario



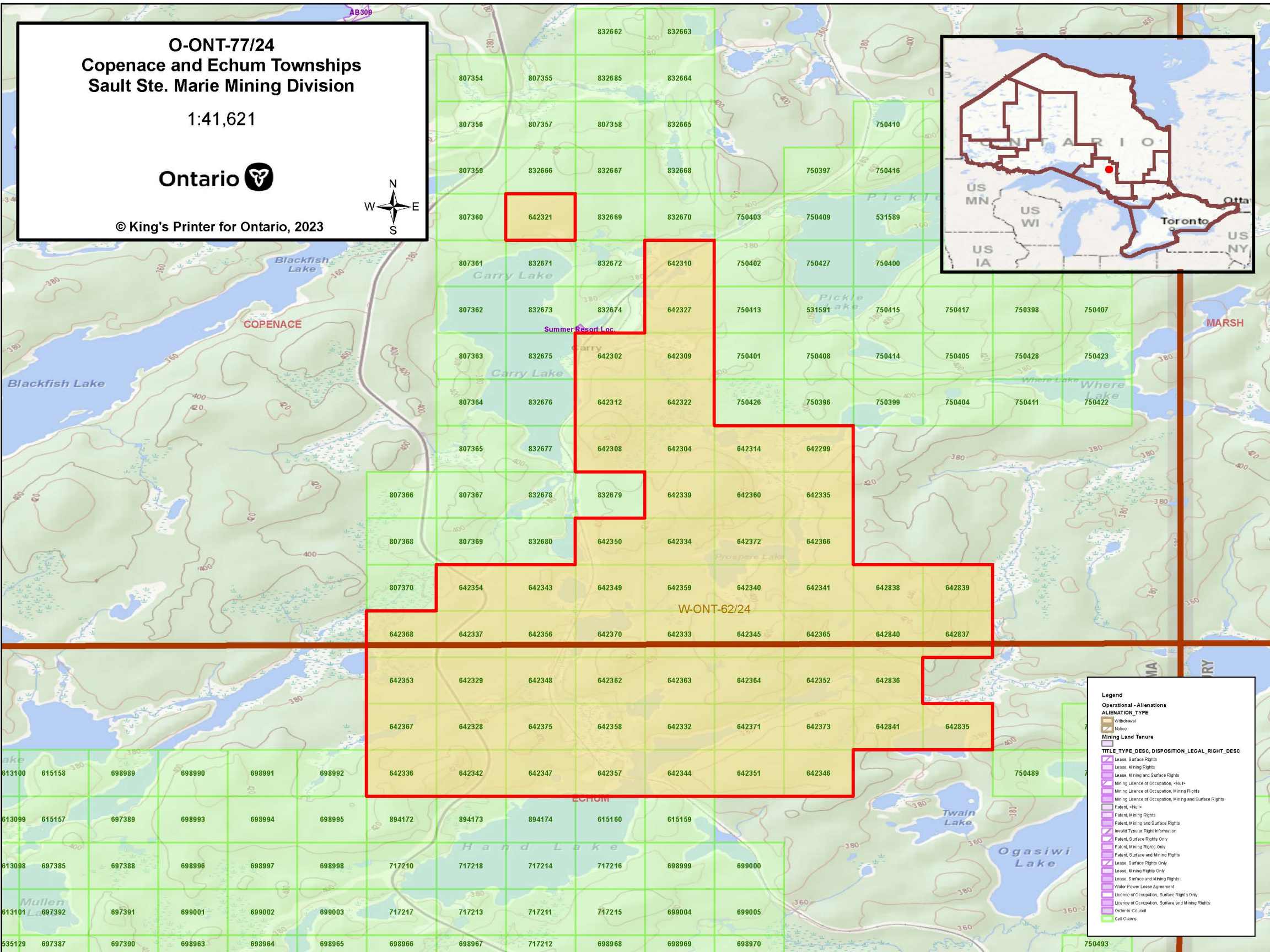
© King's Printer for Ontario, 2023

N

W

E

S



Legend

Operational - Aliens

ALIENATION TYPE



Withdrawal



Notice

Mining Land Tenure

TITLE TYPE_DESC,DISPOSITION_LEGAL_RIGHT_DESC



Lease, Surface Rights



Lease, Mining Rights



Lease, Mining and Surface Rights



Mining Licence of Occupation, Mining Rights



Mining Licence of Occupation, Mining Rights



Mining Licence of Occupation, Mining and Surface Rights



Patent, Mining Rights



Patent, Mining and Surface Rights



Invalid Type or Right Information



Patent, Surface Rights Only



Patent, Mining Rights Only



Patent, Surface and Mining Rights



Lease, Surface Rights Only



Lease, Mining Rights Only



Lease, Surface and Mining Rights



Water Power Lease Agreement

Licence of Occupation, Surface Rights Only

Licence of Occupation, Surface and Mining Rights

Order-in-Council

Cell Claims