

**ORDER**

**SECTION 35, THE MINING ACT, R.S.O. 1990**

**ORDER NO. O-ONT-97/23**

The SURFACE RIGHTS and MINING RIGHTS of the areas outlined in red on the attached sketch, situated in The Areas of South of Martison Lake, and West of Gentles, and the Townships of Abbey, Abbott, Admiral, Amery, Baltic, Bessborough, Brackin, Burstall, Byng, Canfield, Champlain, Coderre, Conking, Cromlech, Devitt, Eilber, Ericson, Garden, Gadinier, Gentles, Goldwin, Habel, Hambly, Hayward, Lambert, Magladery, Mahoney, McBrien, McCuaig, McLeister, Missinaibi, Mulholland, Orkney, Puskuta, Rykert, Sankey, Scovil, Staunton, and Sutcliffe, Porcupine and Sault Ste. Marie Mining Divisions, containing 62,071.54 hectares more or less, were withdrawn from prospecting, mining claim registration, sale and lease by Orders W-P-6/98, W92/70, W18/75, W63/76, W8/79, W64/76, W62/76, W-P-76/14, W-LL-P1544, W-LL-P1542A, W-LL-P1542B, W-ONT-154/25, W-P-155/25 and W-SSM-156/25, while the Ministry determined the status of the lands.

Withdrawal Orders W-P-6/98, W92/70, W18/75, W63/76, W8/79, W64/76, W62/76, W-P-76/14, W-LL-P1544, W-LL-P1542A, W-LL-P1542B, W-ONT-154/25, W-P-155/25 and W-SSM-156/25 is hereby revoked and the lands are REOPENED for prospecting, mining claim registration, sale and lease, unless the lands are otherwise not open for these activities under any other provision of the Mining Act.

This order comes into effect upon signing.



Date: November 28, 2025

---

James Schwyer, Provincial Mining Recorder  
Mining Lands Section  
Mines and Minerals Division

Time: 11:13 am

Copies:  
Senior Manager, Mining Lands Section, MEM, Sudbury  
Provincial Mining Recorder, MEM, Sudbury  
Provincial Lands Specialist – CLR

**ARRÊTÉ**

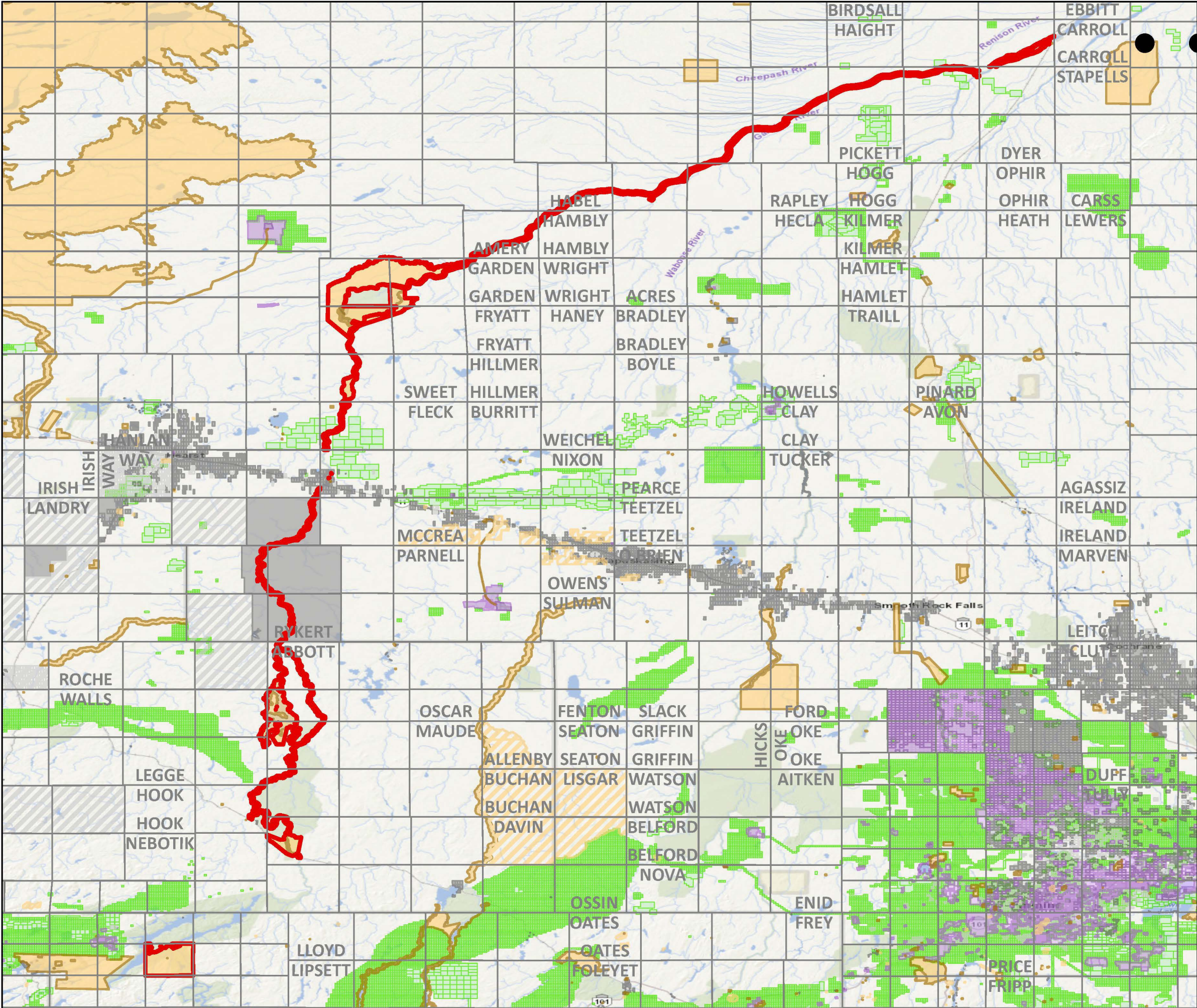
**ARTICLE 35 DE LA *LOI SUR LES MINES*, L.R.O. 1990**

**ARRÊTÉ N<sup>o</sup> O-ONT-97/23**

Les DROITS DE SURFACE et les DROITS MINIERS de la zone délimitée en rouge sur la carte ci-jointe, située dans les régions de South of Martison Lake et West of Gentles et les cantons de Abbey, Abbott, Admiral, Amery, Baltic, Bessborough, Brackin, Burstall, Byng, Canfield, Champlain, Coderre, Conking, Cromlech, Devitt, Eilber, Ericson, Garden, Gadinier, Gentles, Goldwin, Habel, Hambly, Hayward, Lambert, Magladery, Mahoney, McBrien, McCuaig, McLeister, Missinaibi, Mulholland, Orkney, Puskuta, Rykert, Sankey, Scovil, Staunton et Sutcliffe, divisions minières de Porcupine et Sault Ste. Marie, d'une superficie de 62,071.54 hectares plus ou moins, ont été soustraits de la prospection, de l'enregistrement, de la vente et de la location des claims miniers par les arrêtés W-P-6/98, W92/70, W18/75, W63/76, W8/79, W64/76, W62/76, W-P-76/14, W-LL-P1544, W-LL-P1542A, W-LL-P1542B, W-ONT-154/25, W-P-155/25 et W-SSM-156/25 pendant que le ministère déterminait le statut de ces terres.

Les arrêtés de soustraction W-P-6/98, W92/70, W18/75, W63/76, W8/79, W64/76, W62/76, W-P-76/14, W-LL-P1544, W-LL-P1542A, W-LL-P1542B, W-ONT-154/25, W-P-155/25 et W-SSM-156/25 est révoqué et les terres sont RÉOUVERTES à la prospection, à l'enregistrement, à la vente et à la location de claims miniers, sauf si les terres ne sont pas ouvertes à ces activités en vertu d'une autre disposition de la *Loi sur les mines*.

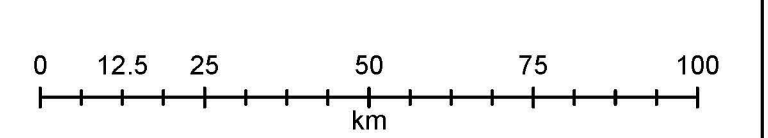
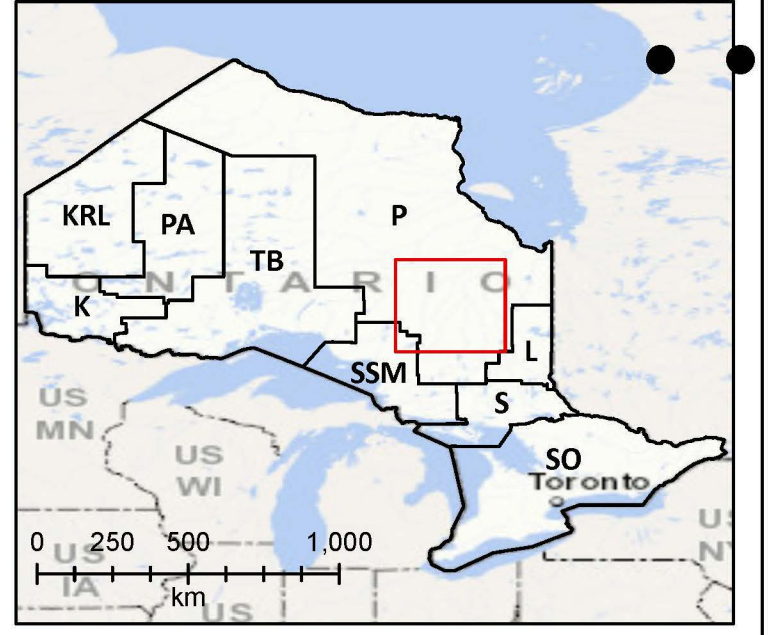
Le présent arrêté entre en vigueur dès sa signature.



# O-ONT-97/23

Multiple Townships and Areas  
Porcupine and Sault Ste. Marie Mining Divisions

- Reopening Area
- Withdrawal (Mining Only, Mining & Surface)
- Withdrawal (Surface Only)
- Mining Claims
- Mining Land Tenure**
- Mining Land Tenure (Surface Only)
- Mining Land Tenure (Mining Only)
- Mining Land Tenure (Mining & Surface)
- Non-Mining Land Tenure**
- Non-Mining Land Tenure (Surface Only)
- Non-Mining Land Tenure (Mining & Surface)



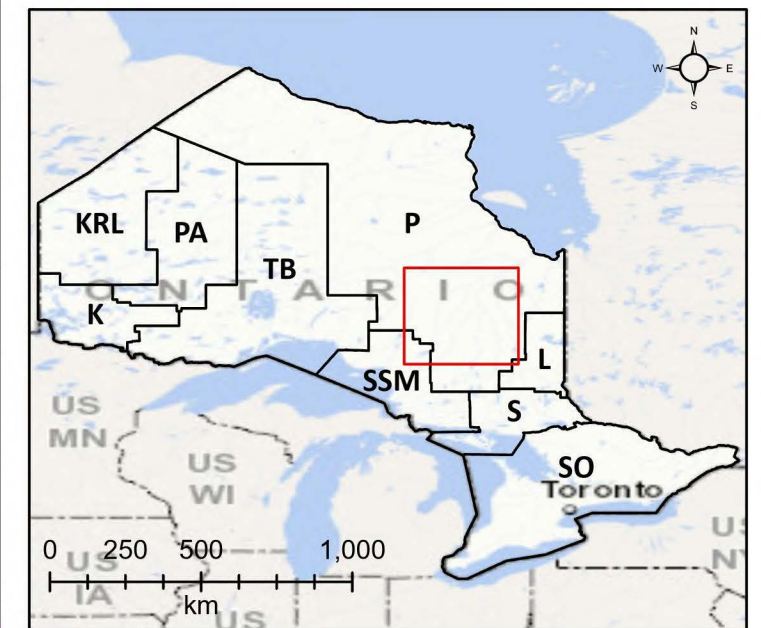
Scale: 1:1,150,000  
Date: 2025-08-22  
Projection: NAD 1983 CSRS



# O-ONT-97/23 & W-ONT-90/23

 Reopening Area  
 Withdrawal Area

-  Withdrawal (Mining Only, Mining & Surface)
-  Withdrawal (Surface Only)
-  Mining Claims
- Mining Land Tenure**
-  Mining Land Tenure (Surface Only)
-  Mining Land Tenure (Mining Only)
-  Mining Land Tenure (Mining & Surface)
- Non-Mining Land Tenure**
-  Non-Mining Land Tenure (Surface Only)
-  Non-Mining Land Tenure (Mining & Surface)



024 8 121620242832364044485256606468727680  
  
 km

Scale: 1:1,200,000  
 Date: 2025-08-19  
 Projection: NAD 1983 CSRS



© King's Printer for Ontario, 2025

