

ORDER

SECTION 35, THE MINING ACT, R.S.O. 1990

ORDER NO. O-P-03/18

The SURFACE and MINING RIGHTS of the areas outlined in red on the attached sketches, situated in the Townships of Swartman (0597) and Beniah (G-3006), Porcupine Mining Division, are hereby REOPENED to prospecting, staking out, sale or lease.

These areas were originally withdrawn by Order W 63/83.

This order comes into effect upon signing.

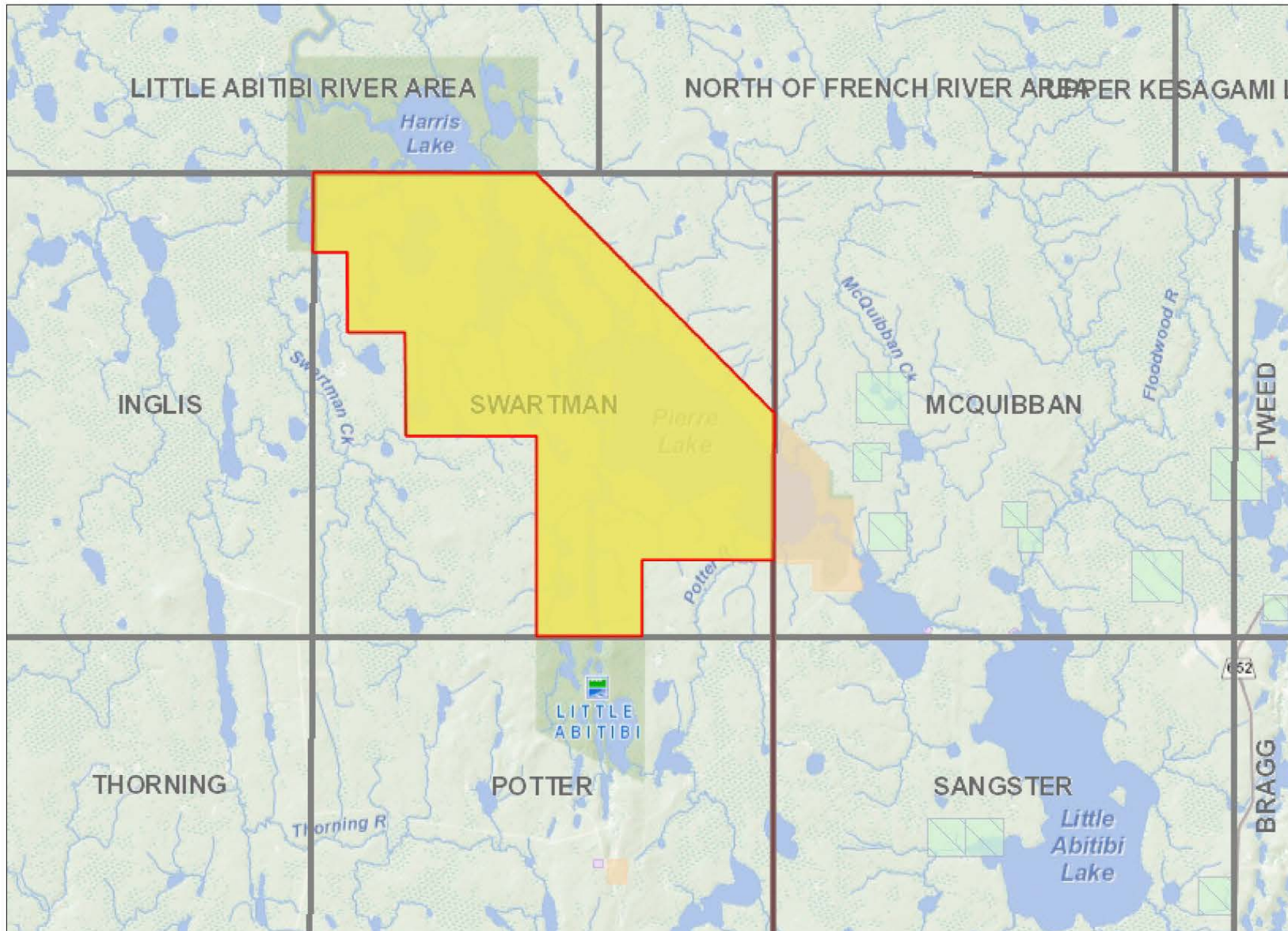
Date: Feb 20 2018

Originally signed by Patrick Brown

Time: 12:01 pm

Patrick Brown, A/Provincial Mining Recorder
Mining Lands Section
Mines and Minerals Division

Copies:
Senior Manager, Mining Lands Section, MNDM, Sudbury
Provincial Mining Recorder, MNDM, Sudbury
Provincial Lands Specialist - CLR



Legend

Administration Boundaries

- Mining Divisions
- Resident Geologist District
- Townships and Areas
- UTM Grid
- Geographic Lot Fabric
- Other Federal Land

Mineral Tenure Grid

- OMTG Tenure Grid

Alienations

- Withdrawal
- Notice

Unpatented Claim

- Active
- Reconciled
- Pending

Disposition

- Disposition

Disposition Symbols

- Camp
- Disposition Unknown/Pending
- Freehold Patent Mining Rights Only
- Freehold Patent Surface Rights Only
- Freehold Patent Surface and Mining Rights
- Land Use Permit
- Leasehold Patent Mining Rights Only
- Leasehold Patent Surface Rights Only
- Leasehold Patent Surface and Mining Rights
- License of Occupation Mining Use Only
- License of Occupation Surface Use Only
- License of Occupation Surface and Mining Rights
- License of Occupation Uses Not Specified
- Order in Council
- Tower
- WPLA

Geology Layers

- AMIS Sites
- AMIS Features
- Drill Holes
- Mineral Occurrences



Projection: Web Mercator

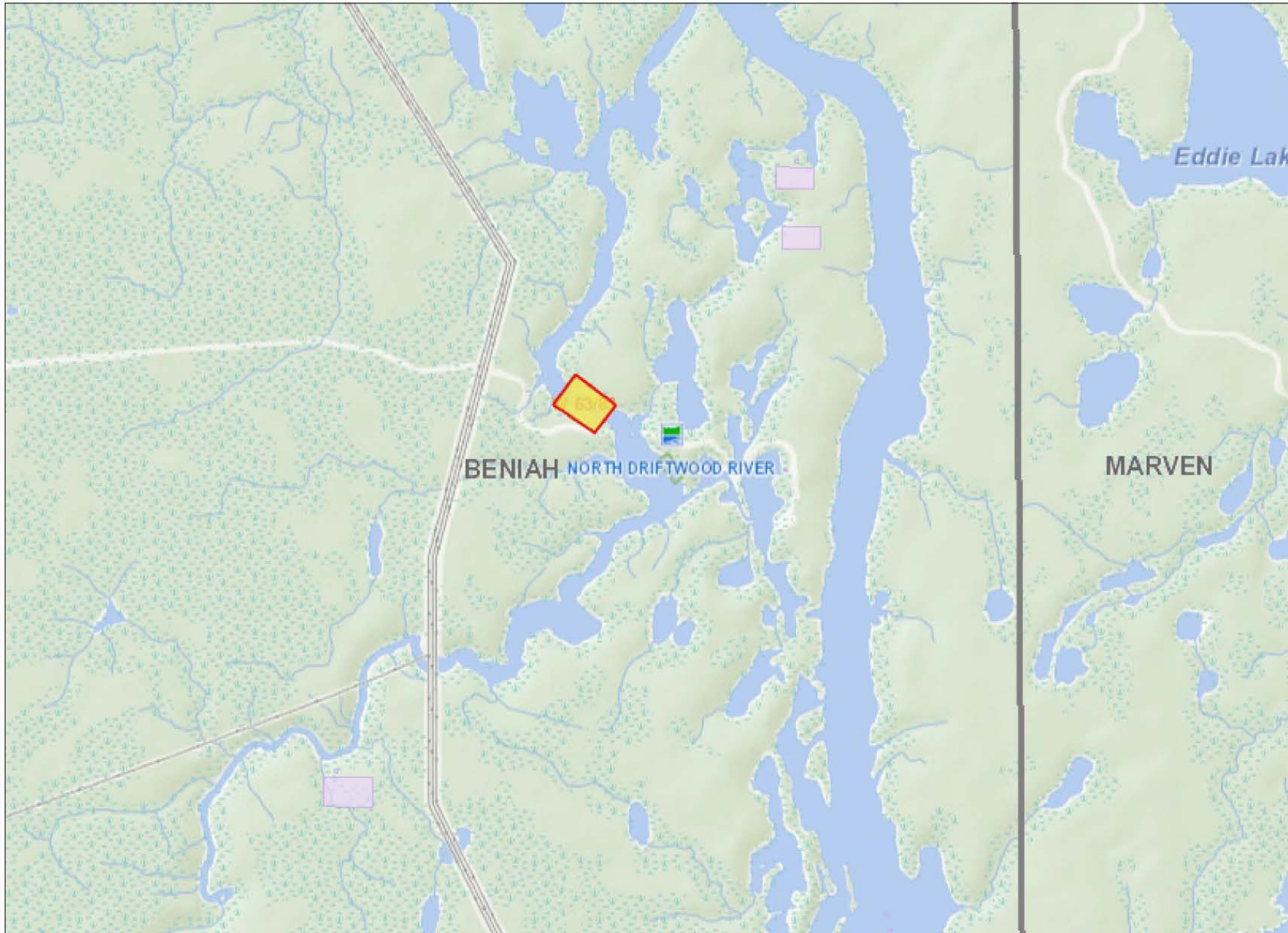


The Ontario Ministry of Northern Development and Mines shall not be liable in any way for the use of, or reliance upon, this map or any information on this map. This map should not be used for: navigation, a plan of survey, routes, nor locations.

Imagery Copyright Notices: Ontario Ministry of Natural Resources and Forestry; NASA Landsat Program; First Base Solutions Inc.; Aéro-Photo (1961) Inc.; DigitalGlobe Inc.; U.S. Geological Survey.

© Copyright for Ontario Parcel data is held by Queen's Printer for Ontario and its licensors and may not be reproduced without permission.





Legend

- Administration Boundaries**
 - Mining Divisions
 - Resident Geologist District
 - Townships and Areas
 - UTM Grid
 - Geographic Lot Fabric
 - Other Federal Land
- Mineral Tenure Grid**
 - OMTG Tenure Grid
- Alienations**
 - Withdrawal
 - Notice
- Unpatented Claim**
 - Active
 - Reconciled
 - Pending
- Disposition**
 - Disposition
- Disposition Symbols**
 - Camp
 - Disposition Unknown/Pending
 - Freehold Patent Mining Rights Only
 - Freehold Patent Surface Rights Only
 - Freehold Patent Surface and Mining Rights
 - Land Use Permit
 - Leasehold Patent Mining Rights Only
 - Leasehold Patent Surface Rights Only
 - Leasehold Patent Surface and Mining Rights
 - License of Occupation Mining Use Only
 - License of Occupation Surface Use Only
 - License of Occupation Surface and Mining Rights
 - License of Occupation Uses Not Specified
 - Order in Council
 - Tower
 - WPLA
- Geology Layers**
 - AMIS Sites
 - AMIS Features
 - Drill Holes
 - Mineral Occurrences



Projection: Web Mercator



The Ontario Ministry of Northern Development and Mines shall not be liable in any way for the use of, or reliance upon, this map or any information on this map. This map should not be used for: navigation, a plan of survey, routes, nor locations.

© Queen's Printer for Ontario, 2016

Imagery Copyright Notices: Ontario Ministry of Natural Resources and Forestry; NASA Landsat Program; First Base Solutions Inc.; Aéro-Photo (1961) Inc.; DigitalGlobe Inc.; U.S. Geological Survey.

© Copyright for Ontario Parcel data is held by Queen's Printer for Ontario and its licensors and may not be reproduced without permission.

