

ORDER**SECTION 35, THE MINING ACT, R.S.O. 1990****ORDER NO. O-P-08/16**

The SURFACE and MINING RIGHTS of the area outlined in red on the attached sketch, in the Swayze Township (G-3249), Porcupine Mining Division, containing 96 hectares, more or less, are hereby REOPENED to prospecting, staking out, sale or lease.

This area was originally withdrawn by Order W-P-84/15, while the Ministry determined the status of the land.

This order comes into effect upon signing.

Date: FEB 12 2016

Time: 4:55p.m.

ORIGINAL SIGNED BY "TONY SCARR"

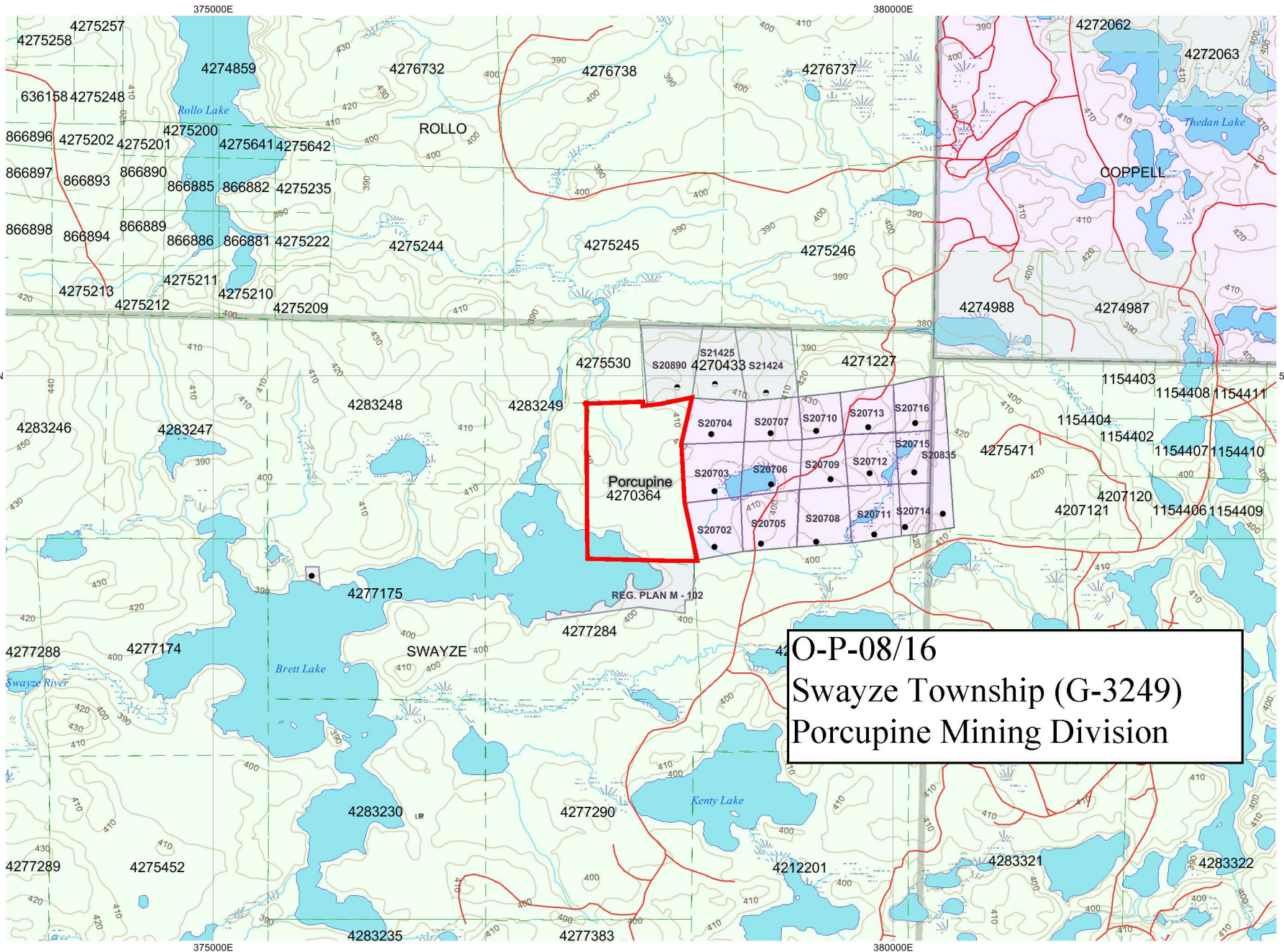
Tony Scarr, Provincial Mining Recorder
Mining Lands Section
Mines and Minerals Division

Copies:

Senior Manager, Mining Lands Section, MNDM, Sudbury

Provincial Mining Recorder, MNDM, Sudbury

Provincial Lands Specialist - CLR



O-P-08/16
Swayze Township (G-3249)
Porcupine Mining Division