

ORDER

SECTION 35, THE MINING ACT, R.S.O. 1990

ORDER NO. O-P-139/24

The SURFACE RIGHTS and MINING RIGHTS of the area outlined in red on the attached sketch, situated in Murphy Township, Porcupine Mining Division, containing 85.49 hectares more or less, were withdrawn from prospecting, mining claim registration, sale and lease by Order W-P-170/24 while the Ministry determined the status of the lands.

Withdrawal Order W-P-170/24 is hereby revoked and the lands are REOPENED for prospecting, mining claim registration, sale and lease, unless the lands are otherwise not open for these activities under any other provision of the Mining Act.

This order comes into effect on November 19, 2024, at 10:00 a.m. eastern standard time or eastern daylight savings time, as the case may be.



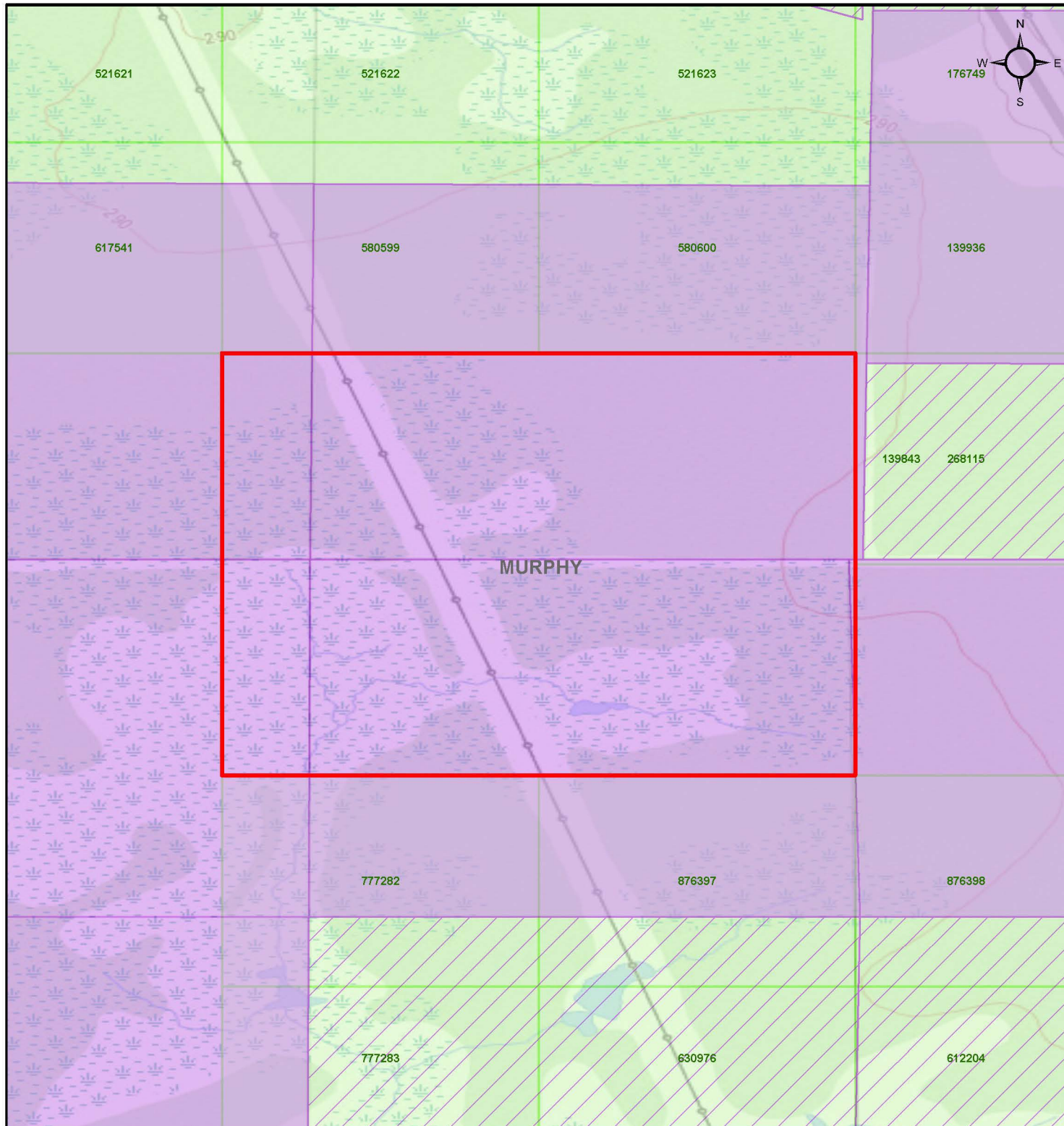
James Schwyer, Provincial Mining Recorder
Mining Lands Section
Mines and Minerals Division

Copies:

Senior Manager, Mining Lands Section, MINES, Sudbury

Provincial Mining Recorder, MINES, Sudbury




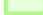
Provincial Lands Specialist – CLR




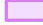

O-P-139/24

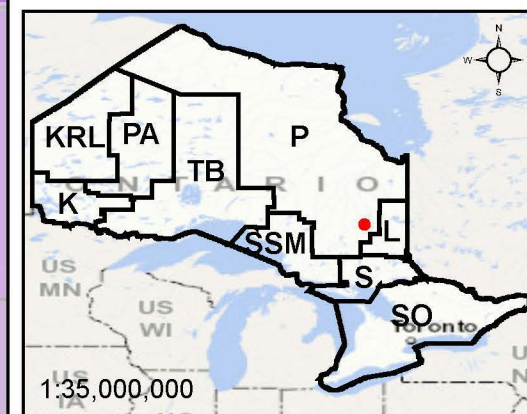
Murphy Township
Porcupine Mining Division

 O-P-139/24

-  Withdrawal
-  Notice
-  Order-in-Council
-  Cell Claims

Land Tenure

-  Surface Rights
-  Mining Rights
-  Mining and Surface Rights



Scale: 1:12,000
Projection: CGS NAD 1983 (CSRS)

Ontario 

© King's Printer for Ontario, 2024