

ORDER

SECTION 35, THE MINING ACT, R.S.O. 1990

ORDER NO. O-P-19/17

The SURFACE and MINING RIGHTS of the area outlined in red on the attached sketch, situated in Denton Township (G-3224), in the Porcupine Mining Division, containing 16 hectares, more or less, are hereby REOPENED to prospecting, staking out, sale or lease.

This area was originally withdrawn by Order W-P-09/17, while the Ministry determined the status of the lands.

This order comes into effect upon signing.

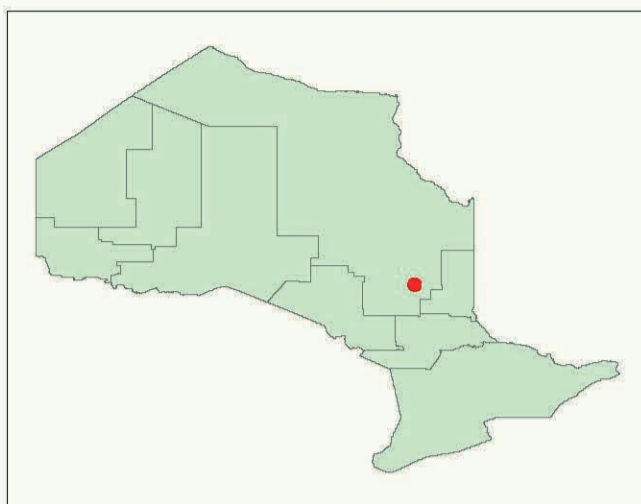
Date: April 25, 2017

Time: 3:04 pm E.S.T.

ORIGINAL SIGNED BY "SCOTT COUSINEAU"
Scott Cousineau, Provincial Mining Recorder
Mines and Minerals Division

Copies:
Senior Manager, Mining Lands Section, MNDM, Sudbury
Provincial Mining Recorder, MNDM, Sudbury
Provincial Lands Specialist – CLR

O-P-19/17
Denton Township (G-3224)
Porcupine Mining District

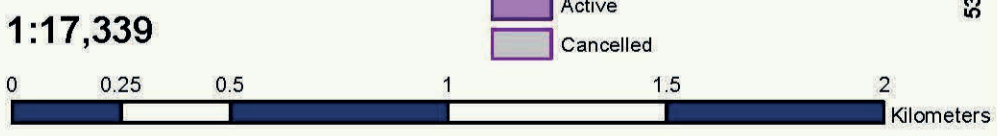
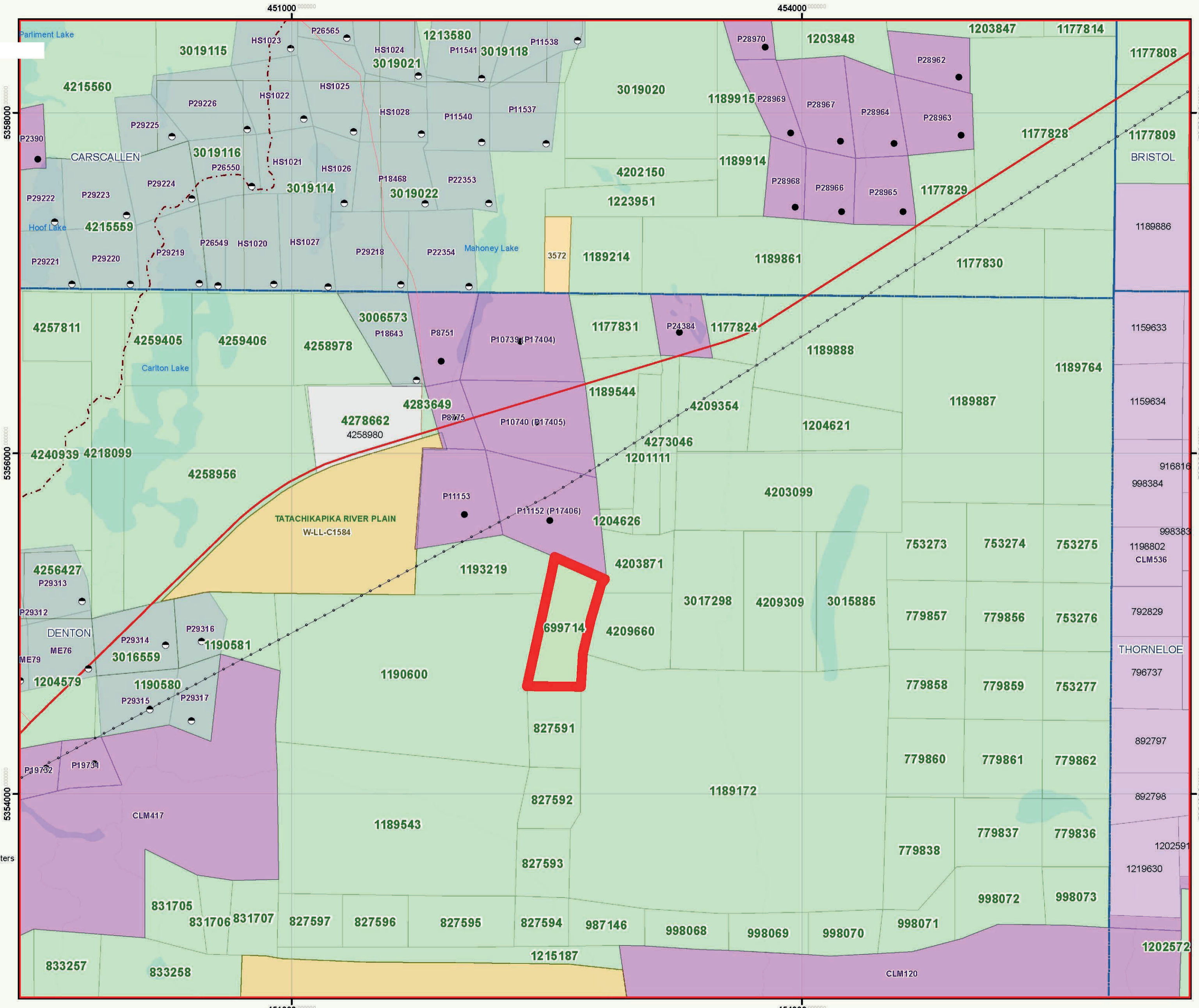


Base Features

- Lands to be Withdrawn
- Tower
- Work Camp
- Utility Site
- MNDM Administrative Boundaries
- Lot Fabric Improved
- Utility Line - Hydro Line**
 - Transmission Line / Ligne de transmission
 - Pipeline
- Road Segment**
 - Other Existing Roads / Autres routes actuelles
 - Primary / Route principale
 - Highway / Autoroute
 - Trail Segment
 - Railway Segment
- Airports**
 - Airports
 - Airport Airstrip
 - Airport Official

Mining Lands Features

- Lands to be Withdrawn
- Dispositions Symbols**
 - Freehold Patent, S+M
 - Freehold Patent, SRO
 - Freehold Patent, MRO
 - Leasehold Patent, S+M
 - Leasehold Patent, SRO
 - Leasehold Patent, MRO
 - Licence of Occupation, S+M
 - Licence of Occupation, SRO
 - Licence of Occupation, MRO
 - Licence of Occupation, not specified
 - Tower
 - Camp
 - Unknown
- OIC Order in Council
- LUP Land Use Permit
- WPLA WPLA
- MNDM Alienations**
 - Active, Withdrawal
 - Active, Notice
 - Cancelled, Withdrawal
 - Cancelled, Notice
- MNDM Mining Claims**
 - Active
 - Cancelled
 - Pending
- MNDM Dispositions**
 - Active
 - Cancelled



This map should not be relied on as a precise indicator of routes or locations, nor as a guide to navigation. The Ontario Ministry of Natural Resources (OMNR) shall not be liable in any way for the use of, or reliance upon, this map or any information on this map.
 Il ne faut pas présumer que cette carte indique précisément les voies et les lieux, ni s'en servir comme guide à la navigation. Le ministère des Richesses naturelles de l'Ontario (MRN) n'assume aucune responsabilité quelle qu'elle soit relativement à l'utilisation de cette carte ou de la confiance qui serait mise en celle-ci.