

**ORDER**

**SECTION 35, THE MINING ACT, R.S.O. 1990**

**ORDER NO. O-P-67/24**

The SURFACE RIGHTS and MINING RIGHTS of the area outlined in red on the attached sketch, situated in the Township of Cargill, Porcupine Mining Division, containing 362.58 hectares more or less, were withdrawn from prospecting, mining claim registration, sale and lease by Order W-P-79/24 while the Ministry determined the status of the lands.

Withdrawal Order W-P-79/24 is hereby revoked and the lands are REOPENED for prospecting, mining claim registration, sale and lease, unless the lands are otherwise not open for these activities under any other provision of the Mining Act.

This order comes into effect on July 26, 2024 at 10:00 a.m. eastern standard time or eastern daylight savings time, as the case may be.



---

James Schwyer, Provincial Mining Recorder  
Mining Lands Section  
Mines and Minerals Division

**Copies:**


Senior Manager, Mining Lands Section, MINES, Sudbury

Provincial Mining Recorder, MINES, Sudbury

Provincial Lands Specialist – CLR

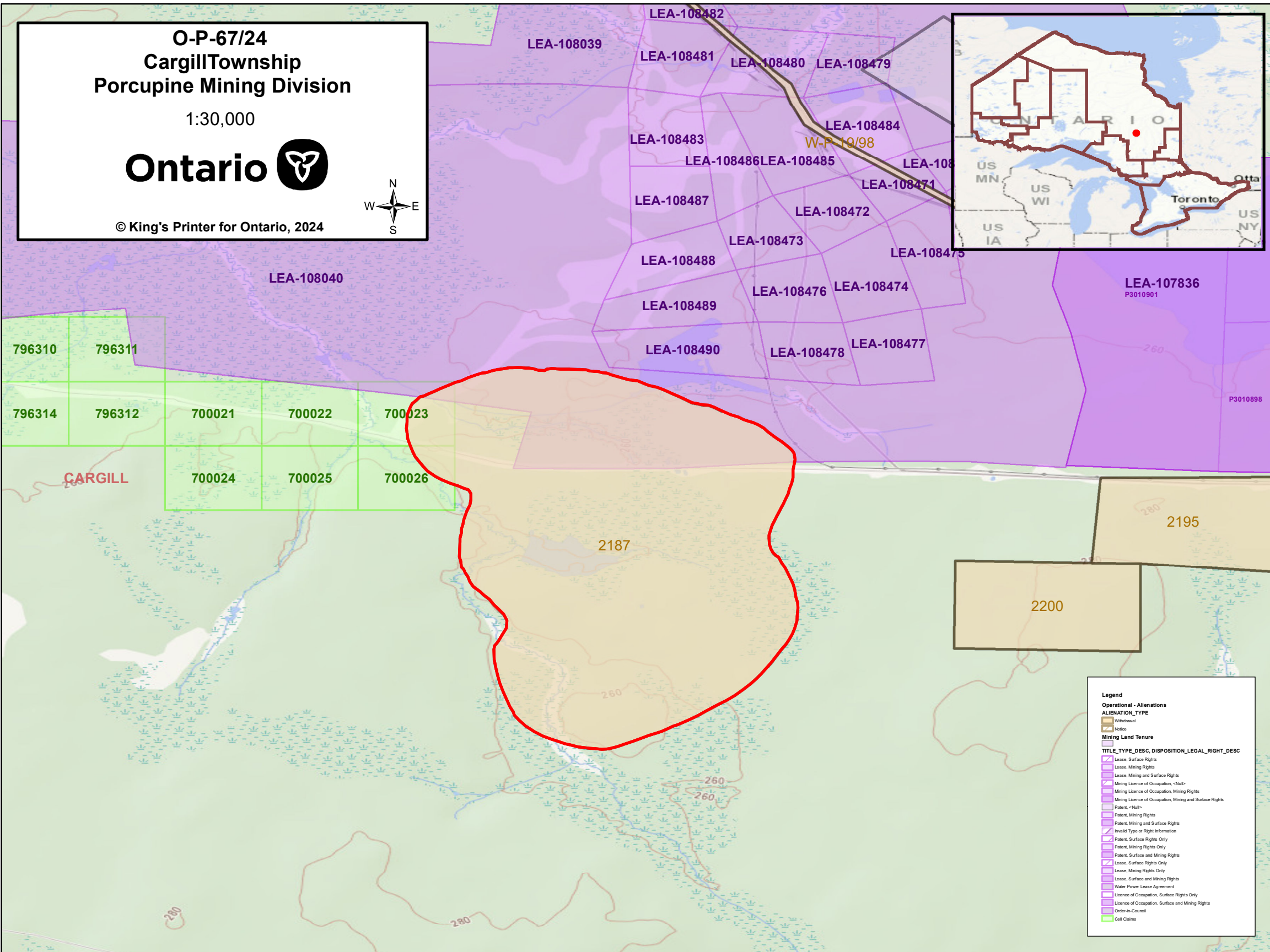
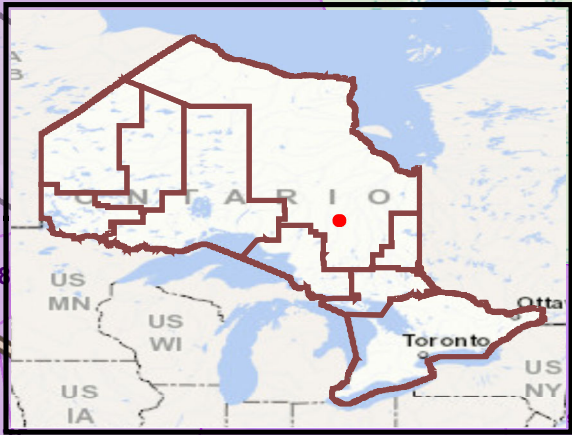
O-P-67/24  
CargillTownship  
Porcupine Mining Division  
1:30,000

Ontario



© King's Printer for Ontario, 2024

N  
W  
E  
S



Legend

Operational - Alienations

ALIENATION\_TYPE

Withdrawal

Notice

Mining Land Tenure

TITLE\_TYPE\_DESC, DISPOSITION\_LEGAL\_RIGHT\_DESC

Lease, Surface Rights

Lease, Mining Rights

Lease, Mining and Surface Rights

Mining Licence of Occupation, <Null>

Mining Licence of Occupation, Mining Rights

Mining Licence of Occupation, Mining and Surface Rights

Patent, <Null>

Patent, Mining Rights

Patent, Mining and Surface Rights

Invalid Type or Right Information

Patent, Surface Rights Only

Patent, Mining Rights Only

Patent, Surface and Mining Rights

Lease, Surface Rights Only

Lease, Mining Rights Only

Lease, Surface and Mining Rights

Water Power Lease Agreement

Licence of Occupation, Surface Rights Only

Licence of Occupation, Surface and Mining Rights

Order-in-Council

Cell Claims