

ORDER

SECTION 35, THE MINING ACT, R.S.O. 1990

ORDER NO. O-P-96/24

The SURFACE RIGHTS and MINING RIGHTS of the area outlined in red on the attached sketch, situated in the Townships of Idington and McCrea, Porcupine Mining Division, containing 62.21 hectares more or less, were withdrawn from prospecting, mining claim registration, sale and lease by Order W-P-99/24 while the Ministry determined the status of the lands.

Withdrawal Order W-P-99/24 is hereby revoked and the lands are REOPENED for prospecting, mining claim registration, sale and lease, unless the lands are otherwise not open for these activities under any other provision of the Mining Act.

This order comes into effect on August 13, 2024 at 10:00 a.m. eastern standard time or eastern daylight savings time, as the case may be.



James Schwyer, Provincial Mining Recorder
Mining Lands Section
Mines and Minerals Division

Copies:

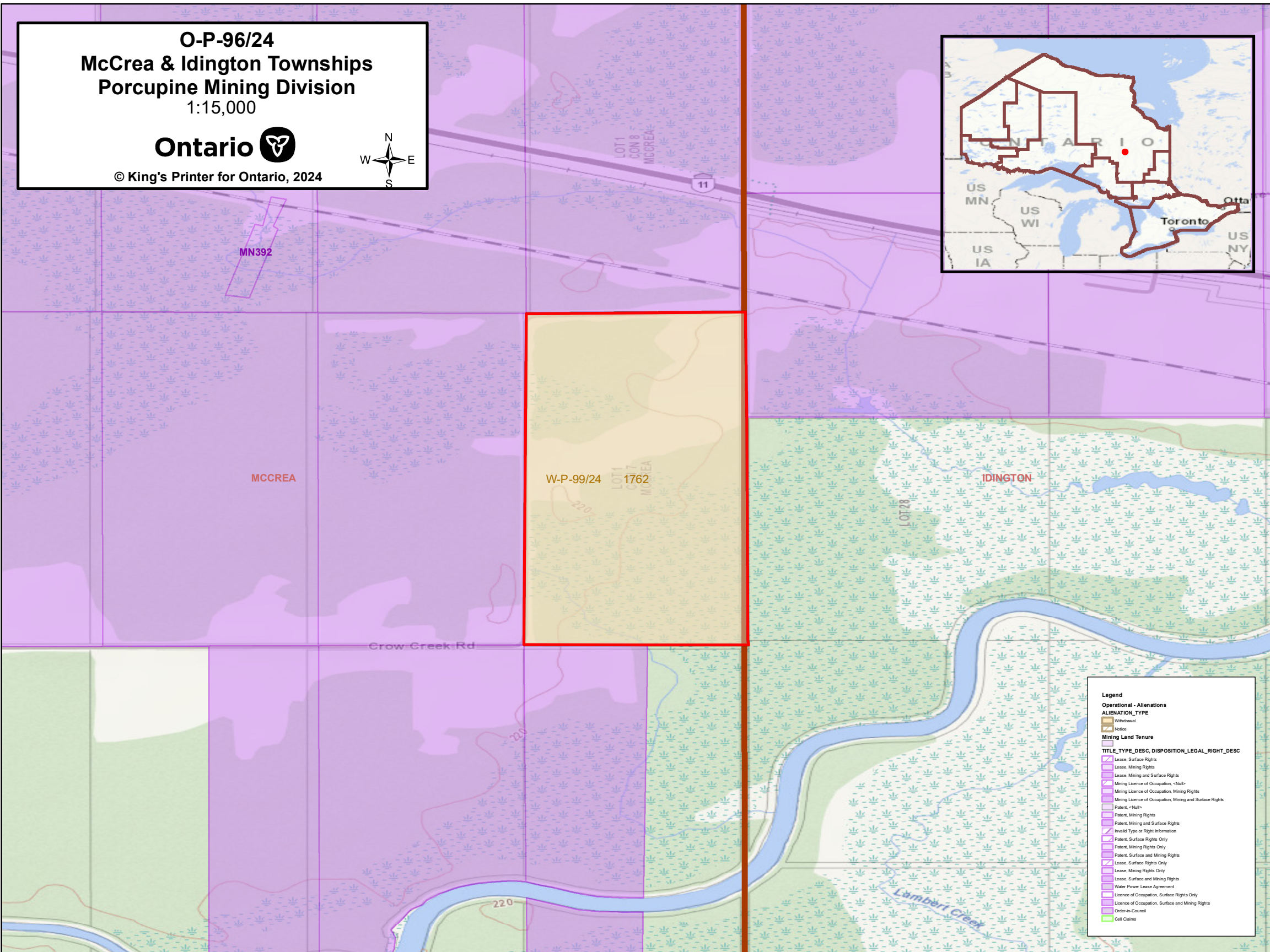
Senior Manager, Mining Lands Section, MINES, Sudbury
Provincial Mining Recorder, MINES, Sudbury
Provincial Lands Specialist – CLR

O-P-96/24

McCrea & Idington Townships
Porcupine Mining Division
1:15,000



© King's Printer for Ontario, 2024



Legend

Operational - Aliens

ALIENATION_TYPE

- Withdrawal
- Notice

Mining Land Tenure

TITLE_TYPE_DESC, DISPOSITION_LEGAL_RIGHT_DESC

- Lease, Surface Rights
- Lease, Mining Rights
- Lease, Mining and Surface Rights
- Mining Licence of Occupation, <Null>
- Mining Licence of Occupation, Mining Rights
- Mining Licence of Occupation, Mining and Surface Rights
- Patent, <Null>
- Patent, Mining Rights
- Patent, Mining and Surface Rights
- Invalid Type or Right Information
- Patent, Surface Rights Only
- Patent, Mining Rights Only
- Patent, Surface and Mining Rights
- Lease, Surface Rights Only
- Lease, Mining Rights Only
- Lease, Surface and Mining Rights
- Water Power Lease Agreement
- Licence of Occupation, Surface Rights Only
- Licence of Occupation, Surface and Mining Rights
- Order-in-Council
- Cell Claims