

ORDER

SECTION 35, THE MINING ACT, R.S.O. 1990

ORDER NO. O-P-97/24

The SURFACE RIGHTS and MINING RIGHTS of the area outlined in red on the attached sketch, situated in the Townships of Gurney and Teetzel, Porcupine Mining Division, containing 113.17 hectares more or less, were withdrawn from prospecting, mining claim registration, sale and lease by Order W-P-100/24 while the Ministry determined the status of the lands.

Withdrawal Order W-P-100/24 is hereby revoked and the lands are REOPENED for prospecting, mining claim registration, sale and lease, unless the lands are otherwise not open for these activities under any other provision of the Mining Act.

This order comes into effect on August 13, 2024 at 10:00 a.m. eastern standard time or eastern daylight savings time, as the case may be.



James Schwyer, Provincial Mining Recorder
Mining Lands Section
Mines and Minerals Division

Copies:

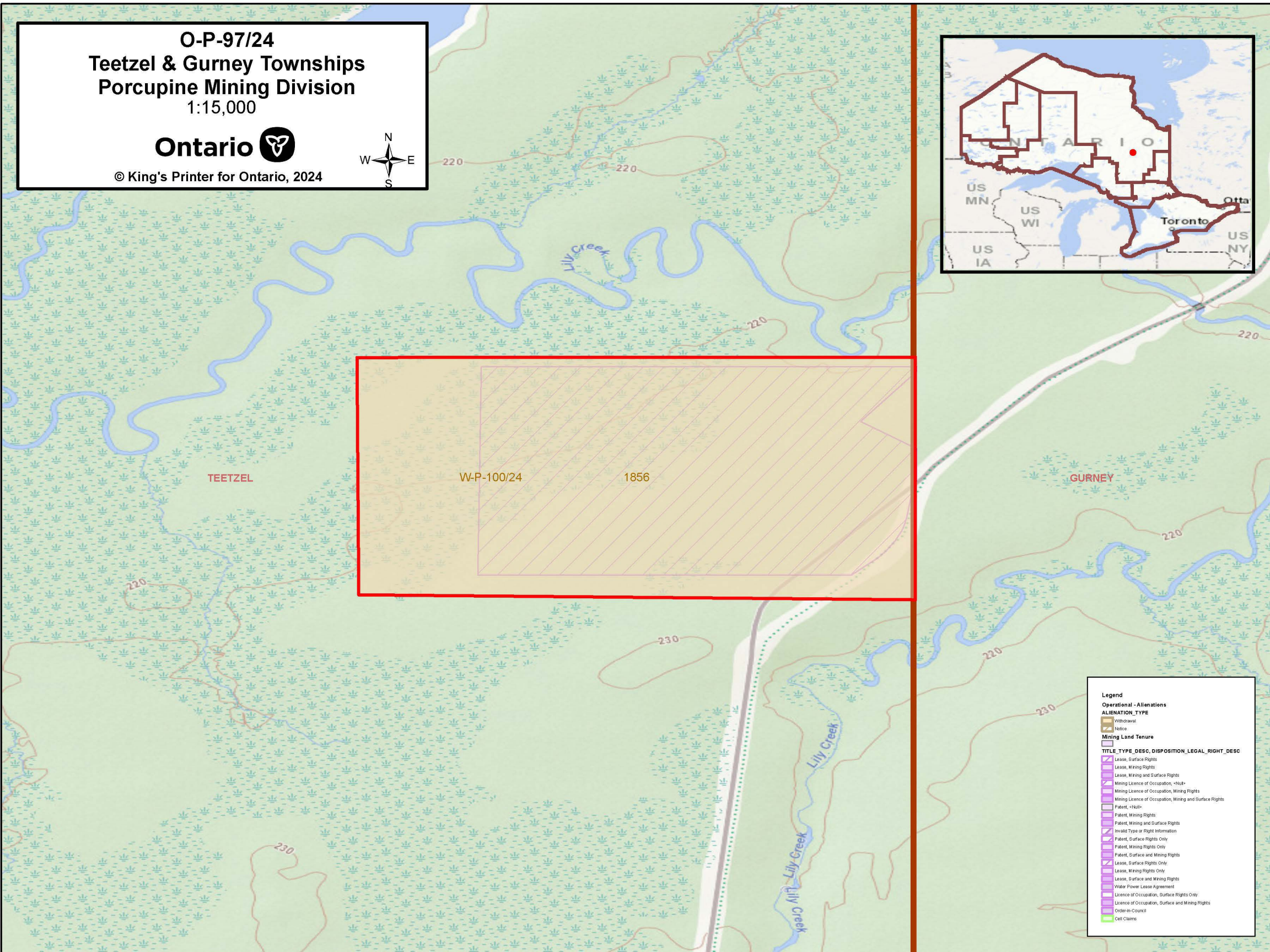
Senior Manager, Mining Lands Section, MINES, Sudbury
Provincial Mining Recorder, MINES, Sudbury
Provincial Lands Specialist – CLR

O-P-97/24

Teetzel & Gurney Townships
Porcupine Mining Division
1:15,000

Ontario

© King's Printer for Ontario, 2024



Legend	
Operational - Aliens	
ALIENATION TYPE	
	Withdrawal
	Notice
Mining Land Tenure	
TITLE TYPE_DESC, DISPOSITION_LEGAL_RIGHT_DESC	
	Lease, Surface Rights
	Lease, Mining Rights
	Lease, Mining and Surface Rights
	Mining Licence of Occupation, <null>
	Mining Licence of Occupation, Mining Rights
	Mining Licence of Occupation, Mining and Surface Rights
	Patent, <null>
	Patent, Mining Rights
	Patent, Mining and Surface Rights
	Invalid Type or Right Information
	Patent, Surface Rights Only
	Patent, Mining Rights Only
	Patent, Surface and Mining Rights
	Lease, Surface Rights Only
	Lease, Mining Rights Only
	Lease, Surface and Mining Rights
	Water Power Lease Agreement
	Licence of Occupation, Surface Rights Only
	Licence of Occupation, Surface and Mining Rights
	Order-in-Council
	Cell Claims