

ORDER

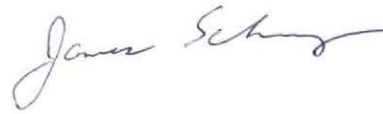
SECTION 35, THE MINING ACT, R.S.O. 1990

ORDER NO. O-S-108/24

The SURFACE RIGHTS of the area outlined in red on the attached sketch, situated in the Townships of Afton, Askin, Clement, Ellis, Gladman, Law, MacBeth, McLaren, Olive, Phyllis, Sisk, Strathcona, and Thistle, Thunder Bay Mining Division, containing 630 hectares more or less, were withdrawn from prospecting, mining claim registration, sale and lease by Order W-S-69/96 while the Ministry determined the status of the lands.

Withdrawal Order W-S-69/96 is hereby revoked and the lands are REOPENED for prospecting, mining claim registration, sale and lease, unless the lands are otherwise not open for these activities under any other provision of the Mining Act.

This order comes into effect upon signing.



Date: August 21, 2024

---

James Schwyer, Provincial Mining Recorder  
Mining Lands Section  
Mines and Minerals Division

Time: 1:18 pm

Copies:

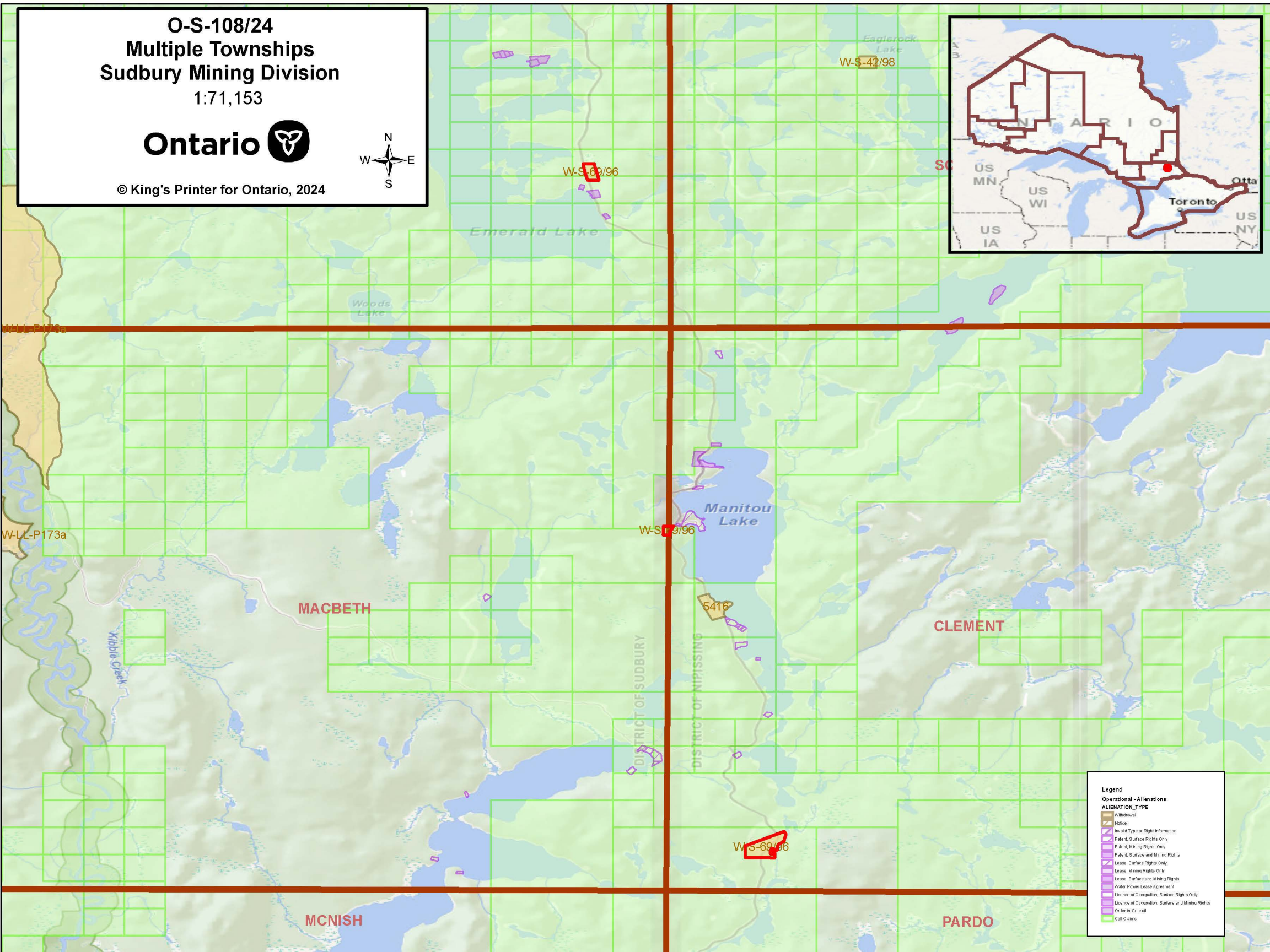
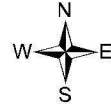
Senior Manager, Mining Lands Section, MINES, Sudbury  
Provincial Mining Recorder, MINES, Sudbury  
Provincial Lands Specialist – CLR

O-S-108/24  
Multiple Townships  
Sudbury Mining Division  
1:71,153

Ontario



© King's Printer for Ontario, 2024



**Legend**

**Operational - Aliens**

**ALIENATION\_TYPE**

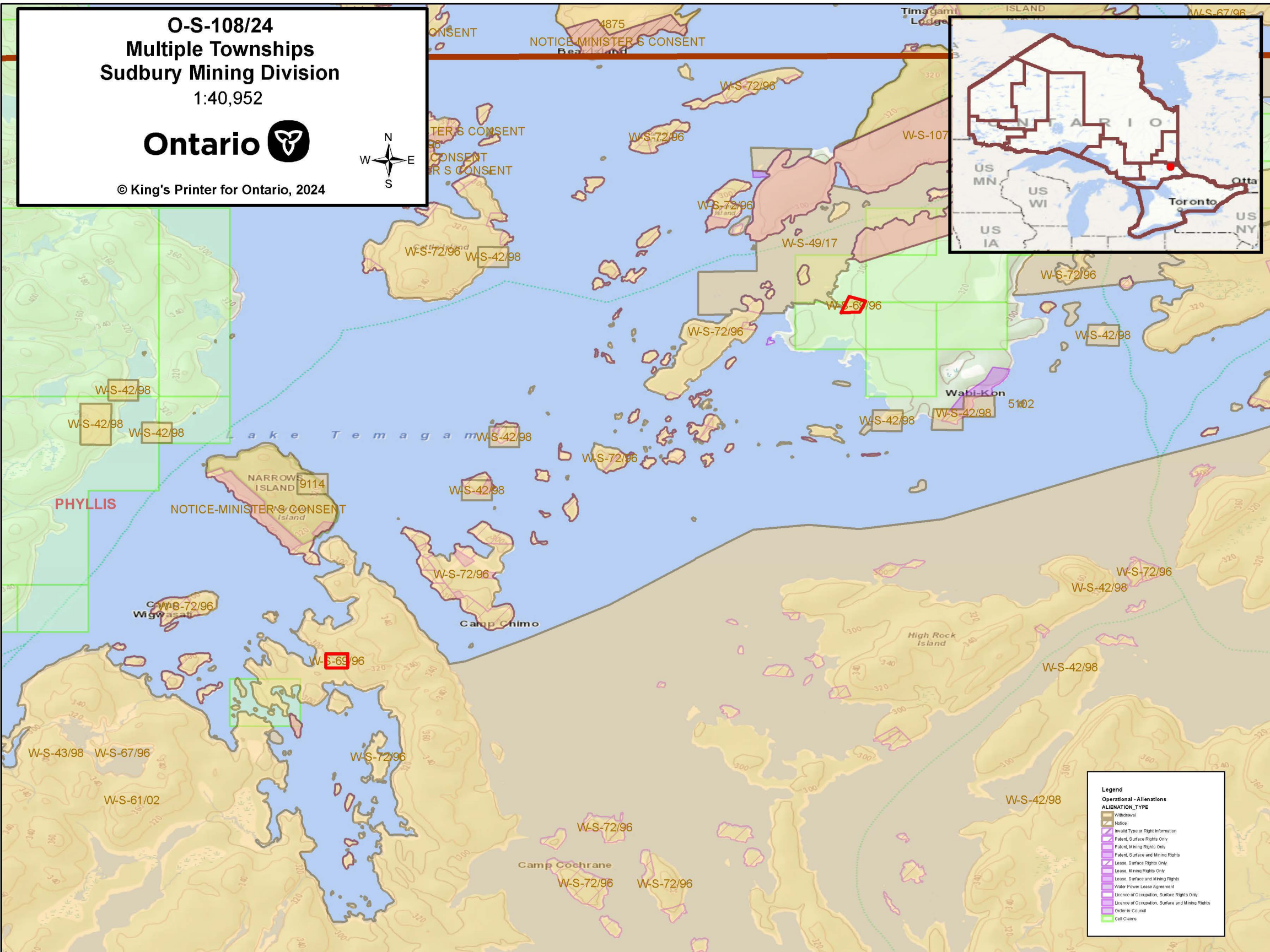
- Withdrawal
- Notice
- Invalid Type or Right Information
- Patent, Surface Rights Only
- Patent, Mining Rights Only
- Patent, Surface and Mining Rights
- Lease, Surface Rights Only
- Lease, Mining Rights Only
- Lease, Surface and Mining Rights
- Water Power Lease Agreement
- Licence of Occupation, Surface Rights Only
- Licence of Occupation, Surface and Mining Rights
- Order-in-Council
- Cell Claims



O-S-108/24  
Multiple Townships  
Sudbury Mining Division  
1:40,952

Ontario

© King's Printer for Ontario, 2024



**Legend**

**Operational - Aliens**

**ALIENATION\_TYPE**

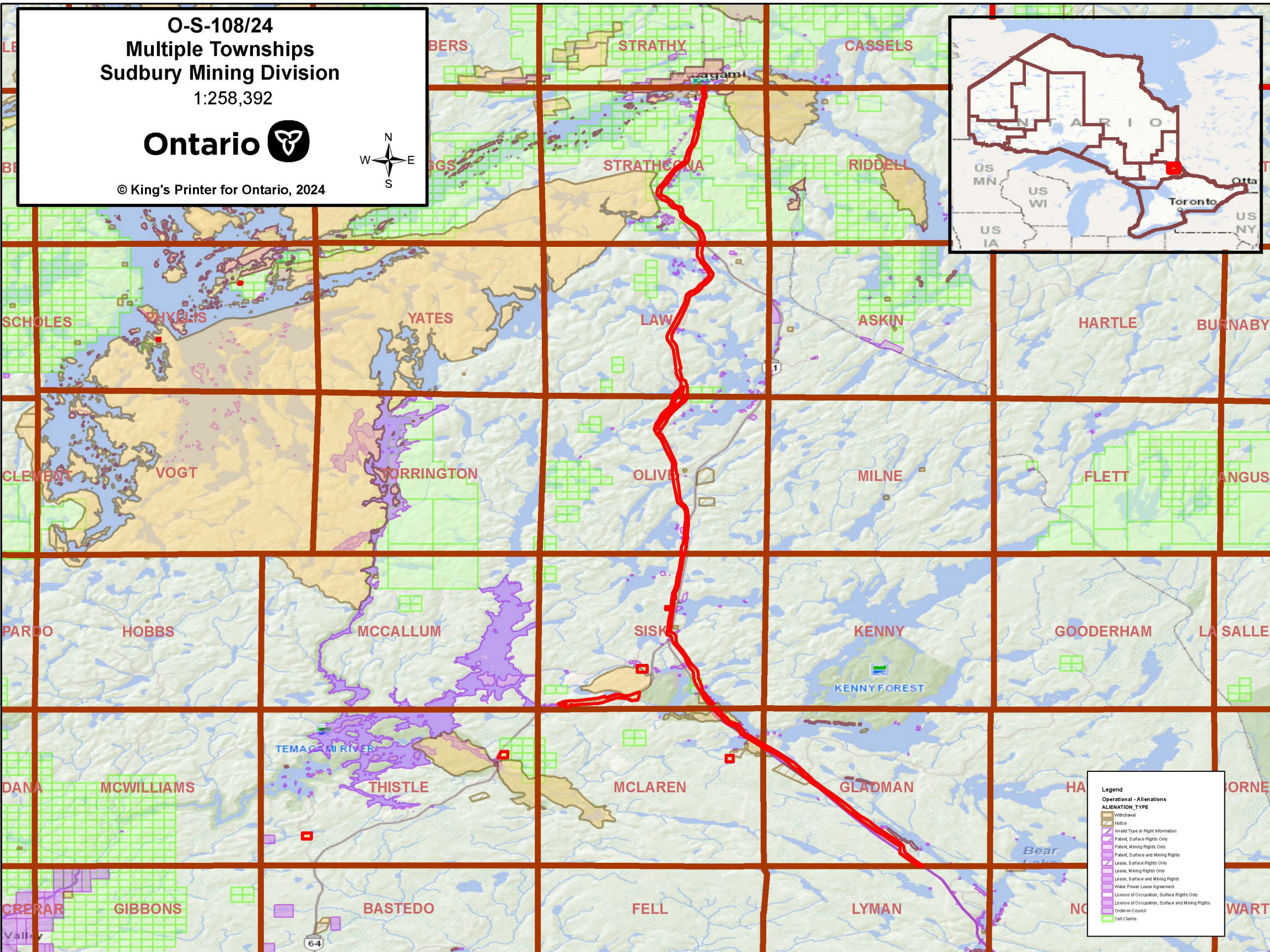
- Withdrawal
- Notice
- Invalid Type or Right Information
- Patent, Surface Rights Only
- Patent, Mining Rights Only
- Patent, Surface and Mining Rights
- Lease, Surface Rights Only
- Lease, Mining Rights Only
- Lease, Surface and Mining Rights
- Water Power Lease Agreement
- Licence of Occupation, Surface Rights Only
- Licence of Occupation, Surface and Mining Rights
- Order-in-Council
- Cell Claims



O-S-108/24  
Multiple Townships  
Sudbury Mining Division  
1:258,392

Ontario

© King's Printer for Ontario, 2024



**Legend**

**Operational - Aliens**

**ALIENATION\_TYPE**

- Withdrawal
- Notice
- Invalid Type or Right Information
- Patent, Surface Rights Only
- Patent, Mining Rights Only
- Patent, Surface and Mining Rights
- Lease, Surface Rights Only
- Lease, Mining Rights Only
- Lease, Surface and Mining Rights
- Water Power Lease Agreement
- Licence of Occupation, Surface Rights Only
- Licence of Occupation, Surface and Mining Rights
- Order-in-Council
- Cell Claims