

ORDER

SECTION 35, THE MINING ACT, R.S.O. 1990

ORDER NO. O-S-123/24

The SURFACE RIGHTS and MINING RIGHTS of the area outlined in red on the attached sketch, situated in Notman Township, Sudbury Mining Division, containing 4.047 hectares more or less, were withdrawn from prospecting, mining claim registration, sale and lease by Order W-S-46/96 NER while the Ministry determined the status of the lands.

Withdrawal Order W-S-46/96 NER is hereby revoked and the lands are REOPENED for prospecting, mining claim registration, sale and lease, unless the lands are otherwise not open for these activities under any other provision of the Mining Act.

This order comes into effect upon signing.

Date: October 1, 2024

Time: 3:21 pm



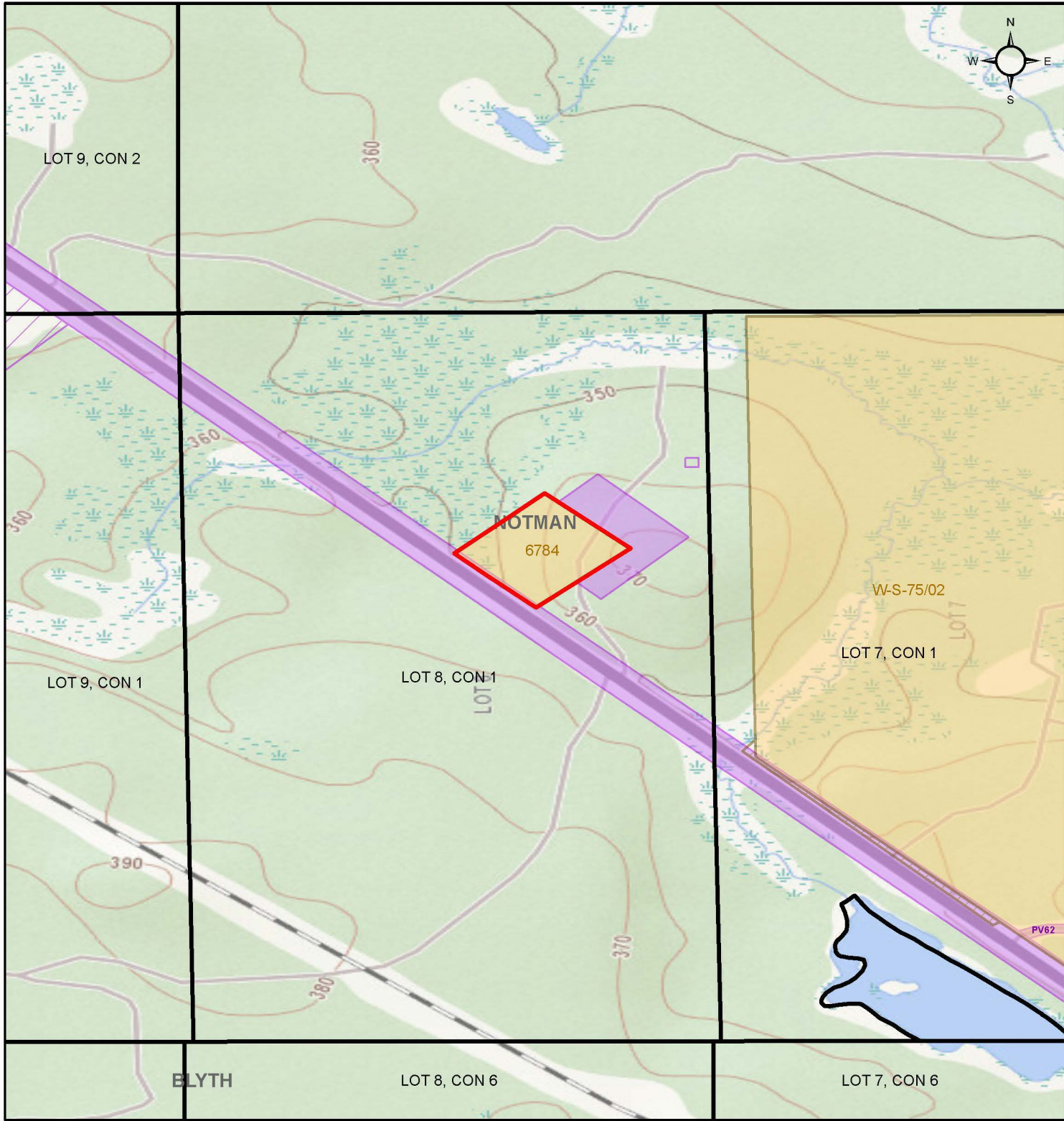
James Schwyer, Provincial Mining Recorder
Mining Lands Section
Mines and Minerals Division

Copies:

Senior Manager, Mining Lands Section, MINES, Sudbury

Provincial Mining Recorder, MINES, Sudbury



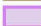
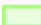
Provincial Lands Specialist – CLR




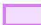
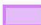
O-S-123/24

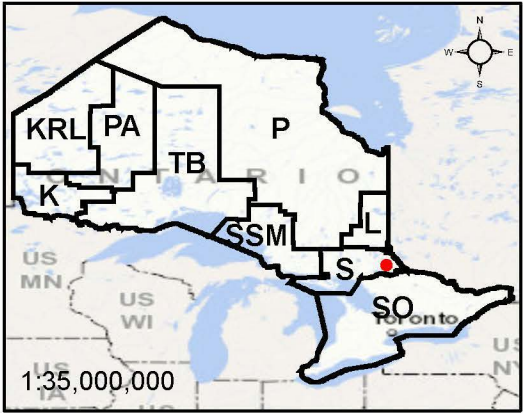
Notman township,
Sudbury Mining Division

 Re-Opening Area

-  Withdrawal
-  Notice
-  Order-in-Council
-  Cell Claims

Land Tenure

-  Surface Rights
-  Mining Rights
-  Mining and Surface Rights



Scale: 1:12,000
Projection: CGS NAD 1983 (CSRS)