

ORDER

SECTION 35, THE MINING ACT, R.S.O. 1990

ORDER NO. O-S-126/25

The SURFACE RIGHTS and MINING RIGHTS of the area outlined in red on the attached sketch, situated in the Township of McAuslan, Sudbury Mining Division, containing 38.88 hectares more or less, were withdrawn from prospecting, mining claim registration, sale and lease by Order W-S-59/24 while the Ministry determined the status of the lands.

Withdrawal Order W-S-59/24 is hereby revoked and the lands are REOPENED for prospecting, mining claim registration, sale and lease, unless the lands are otherwise not open for these activities under any other provision of the Mining Act.

This order comes into effect upon signing.

Date: June 20, 2025

Time: 1:53 pm

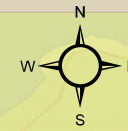
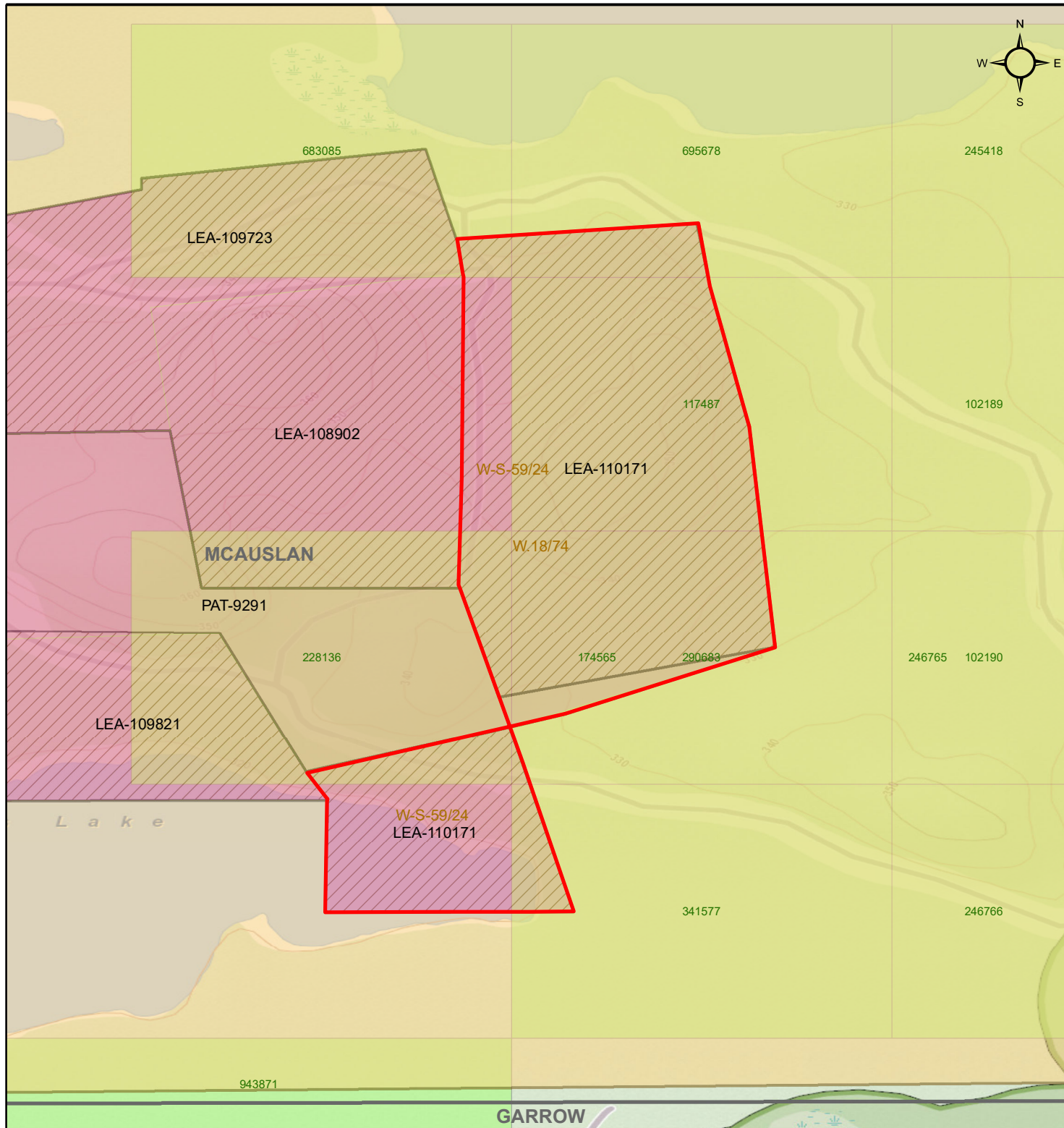


---

James Schwyer, Provincial Mining Recorder  
Mining Lands Section  
Mines and Minerals Division

Copies:

Senior Manager, Mining Lands Section, MEM, Sudbury  
Provincial Mining Recorder, MEM, Sudbury  
Provincial Lands Specialist – CLR



**O-S-126/25**

McAuslan Township  
Sudbury Mining Division

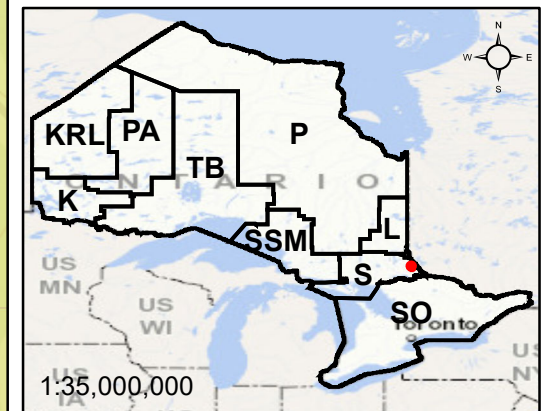


O-S-126/25

- Withdrawal
- Notice
- Order-in-Council
- Cell Claims

**Land Tenure**

- Surface Rights
- Mining Rights
- Mining and Surface Rights



Scale: 1:10,000  
Projection: CGS NAD 1983 (CSRS)

