

ORDER

SECTION 35, THE MINING ACT, R.S.O. 1990

ORDER NO. O-S-143/24

The MINING RIGHTS of the area outlined in red on the attached sketch, situated in the townships of Garrow and McAuslan, Sudbury Mining Division, containing 78.3 hectares more or less, were withdrawn from prospecting, mining claim registration, sale and lease by Order W-S-14/18L while the Ministry determined the status of the lands.

Withdrawal Order W-S-14/18L is hereby revoked and the lands are REOPENED for prospecting, mining claim registration, sale and lease, unless the lands are otherwise not open for these activities under any other provision of the Mining Act.

This order comes into effect upon signing.

Date: November 14, 2024

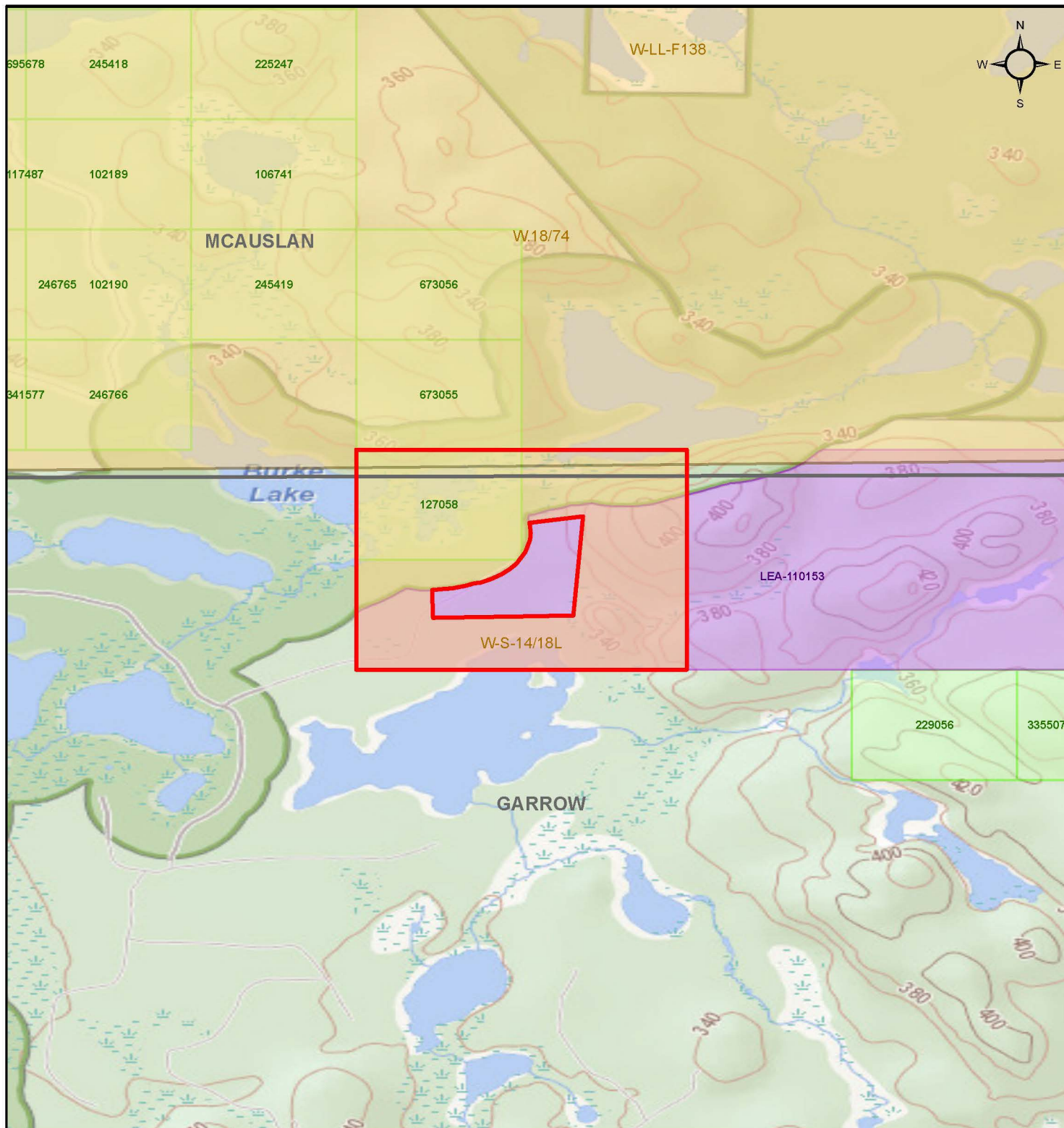
M-F Bedard

for James Schwyer, Provincial Mining Recorder
Mining Lands Section
Mines and Minerals Division

Time: 9:37am

Copies:



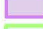
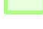
Senior Manager, Mining Lands Section, MINES, Sudbury
Provincial Mining Recorder, MINES, Sudbury
Provincial Lands Specialist – CLR




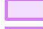

O-S-143/24

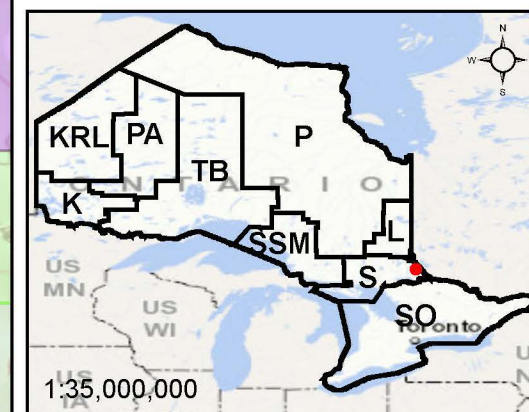
McAuslan and Garrow
Townships
Sudbury Mining Division

 Re-Opening Area

-  Withdrawal
-  Notice
-  Order-in-Council
-  Cell Claims

Land Tenure

-  Surface Rights
-  Mining Rights
-  Mining and Surface Rights



Scale: 1:23,000
Projection: CGS NAD 1983 (CSRS)

Ontario 

© King's Printer for Ontario, 2024