

ORDER

SECTION 35, THE MINING ACT, R.S.O. 1990

ORDER NO. O-S-36/16

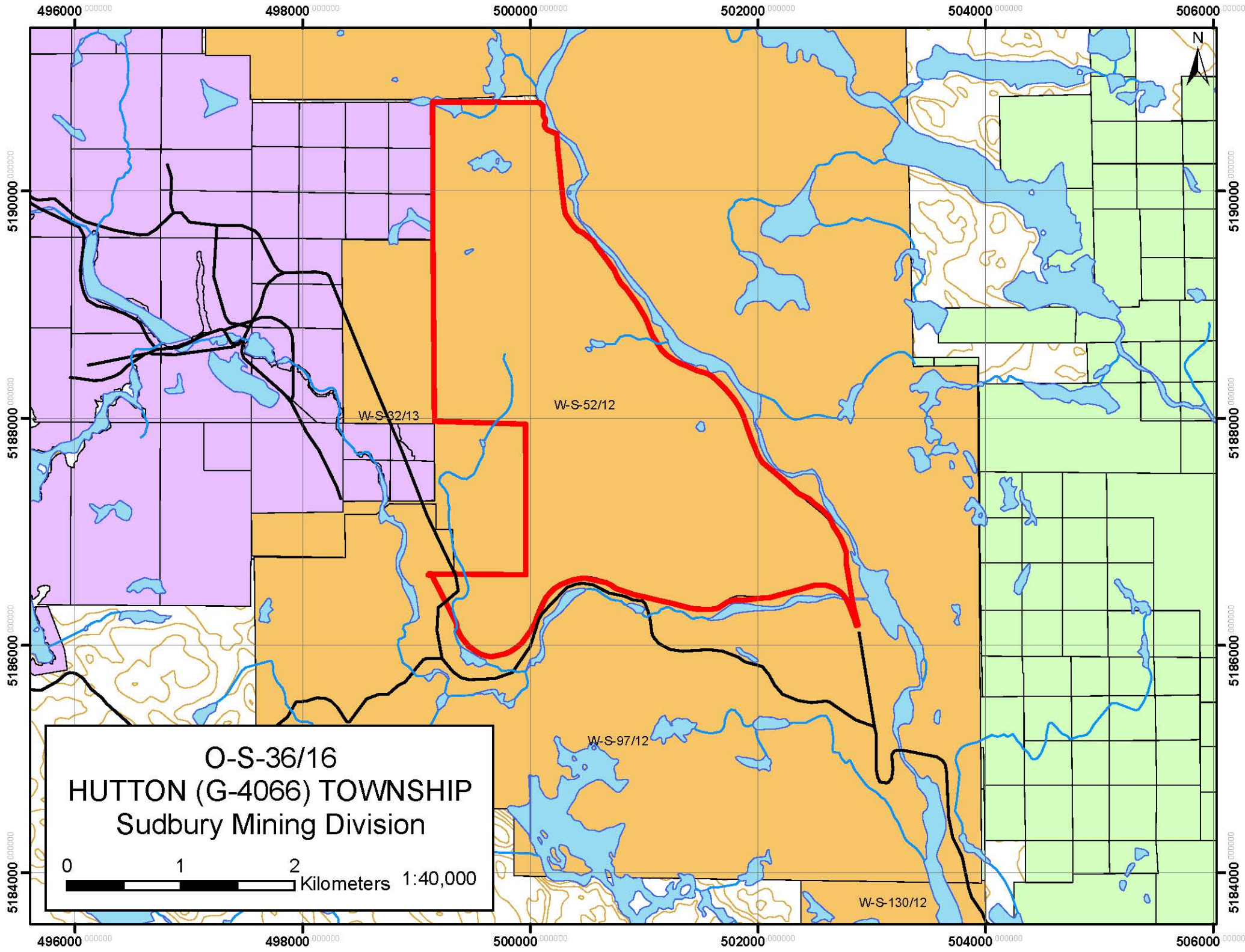
The SURFACE and MINING RIGHTS of the area outlined in red on the attached sketch, in Hutton (G-4066) Township, Sudbury Mining Division, containing 877.7663 hectares, more or less, are hereby REOPENED to prospecting, staking out, sale or lease.

This area was originally withdrawn by Order W-S-52/12, while the MNRF reviewed the status of a PLA.

This order comes into effect on Monday, August 8, 2016 at 08:00:01 a.m. standard time.

Original Signed by Scott Cousineau
Scott Cousineau, Provincial Mining Recorder
Mining Lands Section
Mines and Minerals Division

Copies:
Senior Manager, Mining Lands Section, MNDM, Sudbury
Provincial Mining Recorder, MNDM, Sudbury
Provincial Lands Specialist - CLR



O-S-36/16
HUTTON (G-4066) TOWNSHIP
Sudbury Mining Division

0 1 2 Kilometers 1:40,000