

**ORDER**

**SECTION 35, THE MINING ACT, R.S.O. 1990**

**ORDER NO. O-S-37/16**

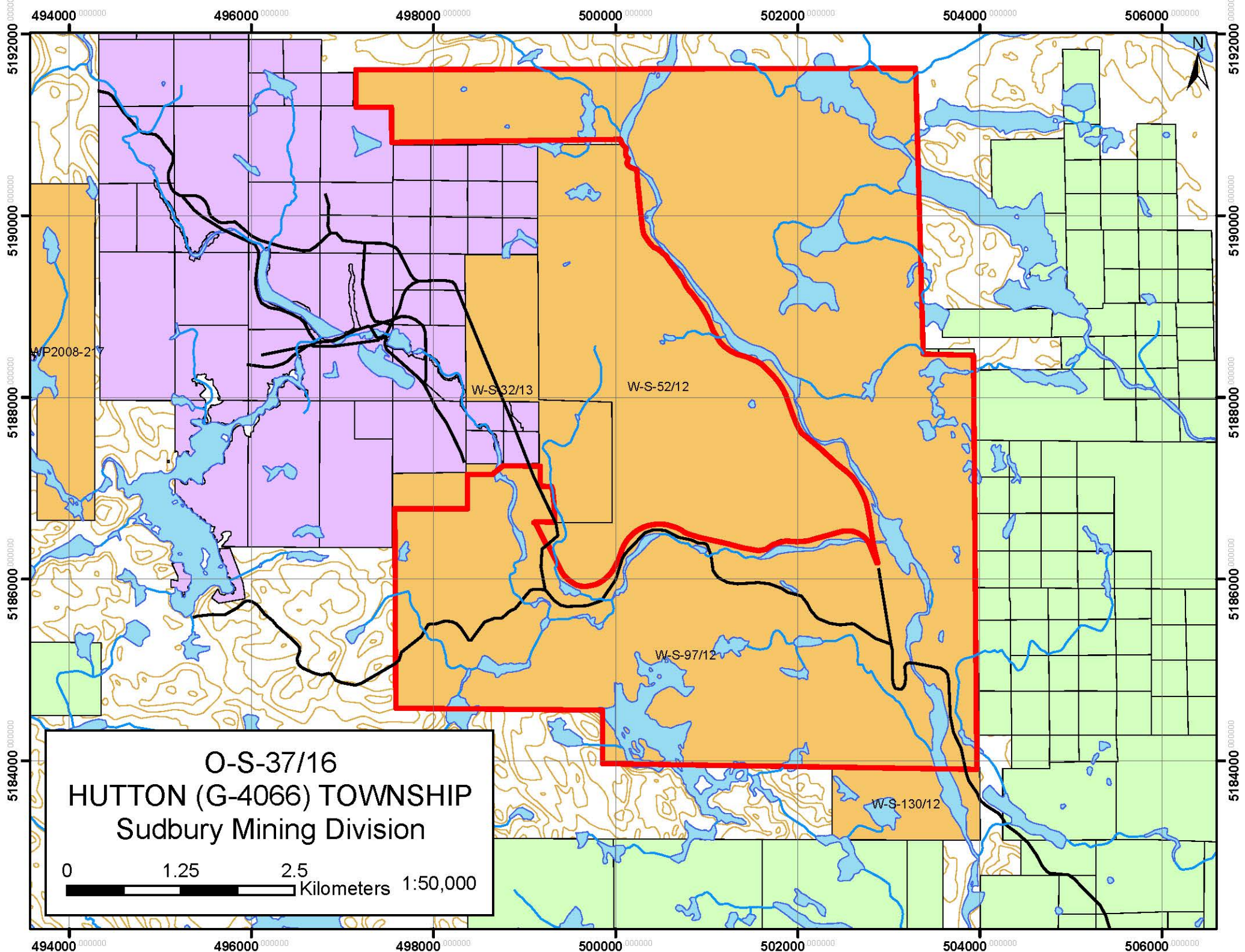
The SURFACE and MINING RIGHTS of the area outlined in red on the attached sketch, in Hutton (G-4066) Township, Sudbury Mining Division, containing 2,983 hectares, more or less, are hereby REOPENED to prospecting, staking out, sale or lease.

This area was originally withdrawn by Order W-S-97/12, while the MNRF reviewed the status of a PLA.

This order comes into effect on Monday, August 8, 2016 at 08:00:01 a.m. standard time.

Original Signed by Scott Cousineau  
Scott Cousineau, Provincial Mining Recorder  
Mining Lands Section  
Mines and Minerals Division

Copies:  
Senior Manager, Mining Lands Section, MNDM, Sudbury  
Provincial Mining Recorder, MNDM, Sudbury  
Provincial Lands Specialist - CLR



O-S-37/16  
HUTTON (G-4066) TOWNSHIP  
Sudbury Mining Division

0 1.25 2.5 Kilometers 1:50,000

WP2008-27

W-S-32/13

W-S-52/12

W-S-97/12

W-S-130/12