

ORDER

SECTION 35, THE MINING ACT, R.S.O. 1990

ORDER NO. O-TB-110/24

The SURFACE RIGHTS and MINING RIGHTS of the area outlined in red on the attached sketch, situated in the Ashmore and Croll Townships, Thunder Bay Mining Division, containing 208.76 hectares more or less, were withdrawn from prospecting, mining claim registration, sale and lease by Orders W-TB-126/24 and W-TB-127/24 while the Ministry determined the status of the lands.

Withdrawal Orders W-TB-126/24 and W-TB-127/24 is hereby revoked and the lands are REOPENED for prospecting, mining claim registration, sale and lease, unless the lands are otherwise not open for these activities under any other provision of the Mining Act.

This order comes into effect upon signing.

Date: August 28, 2024

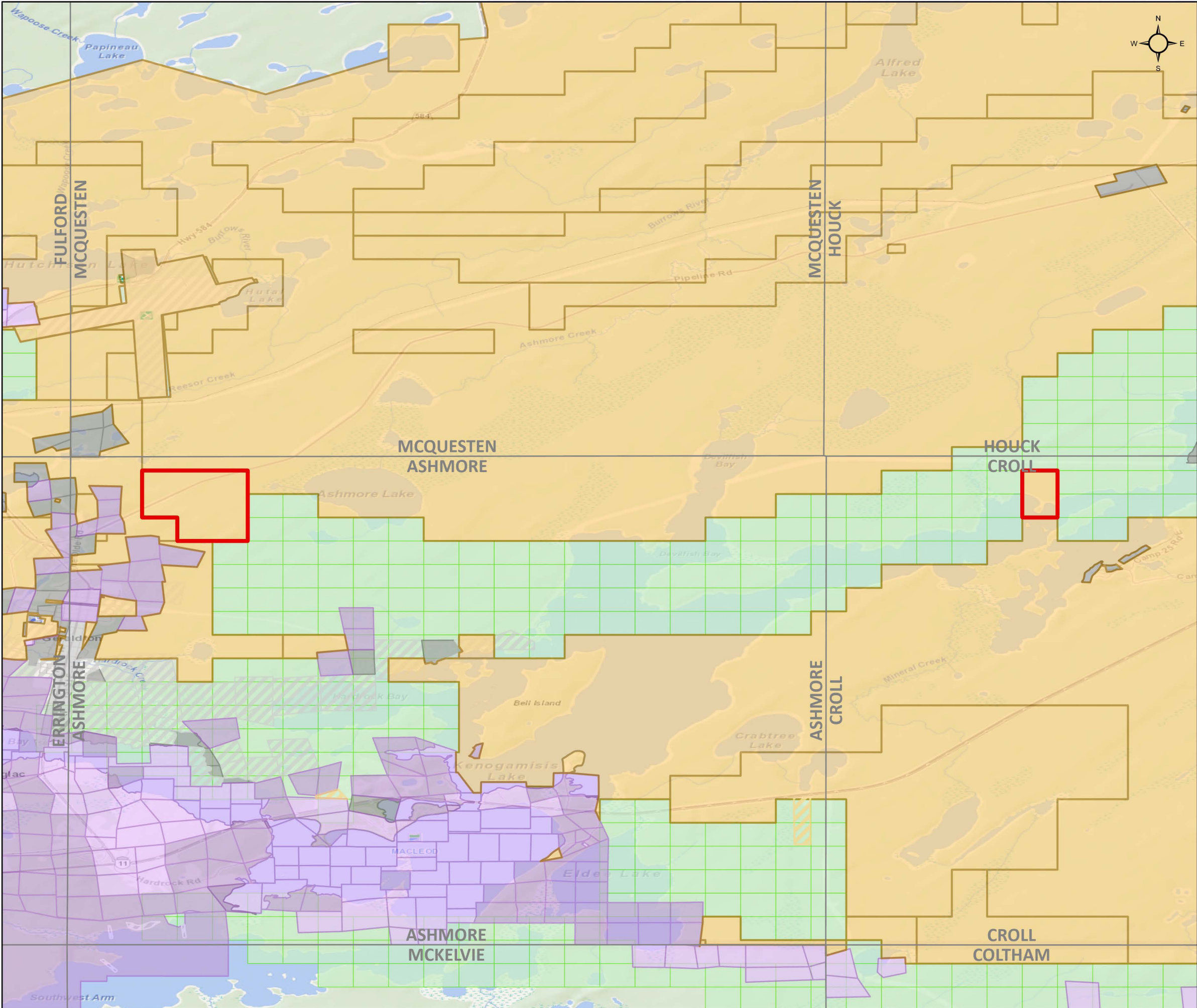
Time: 5:29 PM



Carol Smith, Director
Information and Lands Branch

Copies:

Senior Manager, Mining Lands Section, MINES, Sudbury
Provincial Mining Recorder, MINES, Sudbury
Provincial Lands Specialist – CLR

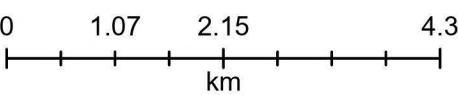


O-TB-110/24

ASHMORE AND CROLL TOWNSHIPS
Thunder Bay Mining Division

 **Withdrawal Area: 208.76 ha**

-  Withdrawal (Mining Only, Mining & Surface)
-  Withdrawal (Surface Only)
-  Order-in-Council
-  Mining Claims
- Mining Land Tenure**
 -  Mining Land Tenure (Surface Only)
 -  Mining Land Tenure (Mining Only)
 -  Mining Land Tenure (Mining & Surface)
- Non-Mining Land Tenure**
 -  Non-Mining Land Tenure (Surface Only)
 -  Non-Mining Land Tenure (Mining Only)
 -  Non-Mining Land Tenure (Mining & Surface)



Scale: 1:75,000
Date: 2024-08-22
Projection: NAD 1983 CSRS



© King's Printer for Ontario, 2024