

**ORDER**

**SECTION 35, THE MINING ACT, R.S.O. 1990**

**ORDER NO. O-TB-125/25**

The SURFACE RIGHTS and MINING RIGHTS of the area outlined in red on the attached sketch, situated in the Townships of Bickle, Coltham, McKelvie and Salsberg and in the Areas Burrows Lake, Isobel Lake and McBean Lake, Thunder Bay Mining Division, containing 1,320.03 hectares more or less, were withdrawn from prospecting, mining claim registration, sale and lease by Order W-TB-173/24 while the Ministry determined the status of the lands.

Withdrawal Order W-TB-173/24 is hereby revoked and the lands are REOPENED for prospecting, mining claim registration, sale and lease, unless the lands are otherwise not open for these activities under any other provision of the Mining Act.

This order comes into effect on July 04, 2025, at 10:00 a.m. eastern standard time or eastern daylight savings time, as the case may be.

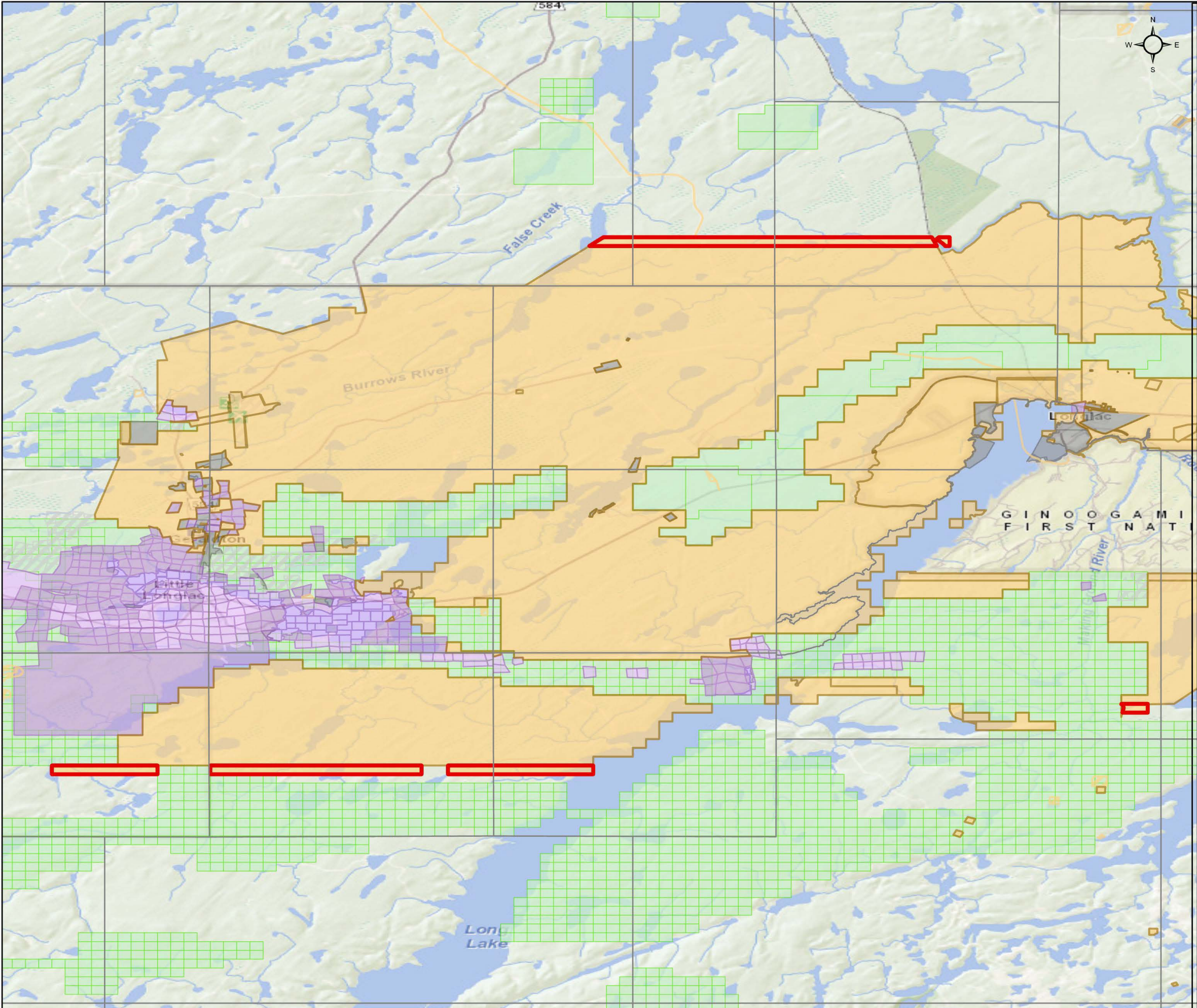
  


Afsana Qureshi, Assistant Deputy Minister  
Mines and Minerals Division

**Copies:**

Senior Manager, Mining Lands Section, MEM, Sudbury  
Provincial Mining Recorder, MEM, Sudbury  
Provincial Lands Specialist – CLR





# O-TB-125/25

Bickle, Coltham, McKelvie, and Salsberg Townships, Burrows Lake, Isobel Lake and McBean Lake Areas  
Thunder Bay Mining Division

**Reopening Area: 1,320.03**

- Withdrawal (Mining Only, Mining & Surface)
- Withdrawal (Surface Only)
- Order-in-Council
- Mining Claims
- Mining Land Tenure**
  - Mining Land Tenure (Surface Only)
  - Mining Land Tenure (Mining Only)
  - Mining Land Tenure (Mining & Surface)
- Non-Mining Land Tenure**
  - Non-Mining Land Tenure (Surface Only)
  - Non-Mining Land Tenure (Mining Only)
  - Non-Mining Land Tenure (Mining & Surface)



Scale: 1:200,000  
Date: 06/19/2025  
Projection: NAD 1983 CSRS