

ORDER

SECTION 35, THE MINING ACT, R.S.O. 1990

ORDER NO. O-TB 129/25

The SURFACE RIGHTS and MINING RIGHTS of the area outlined in red on the attached sketch, situated in the Areas of Candide Lake, Chief Bay, English Bay, Havoc Lake, Nipigon House, Norwood Lake, Obonga Lake, Pangloss Lake and Voltaire Lake, Thunder Bay Mining Division, containing 38,561.54 hectares more or less, were withdrawn from prospecting, mining claim registration, sale and lease by Order W-TB-121/25 while the Ministry determined the status of the lands.

Withdrawal Order W-TB-121/25 is hereby revoked and the lands are REOPENED for prospecting, mining claim registration, sale and lease, unless the lands are otherwise not open for these activities under any other provision of the Mining Act.

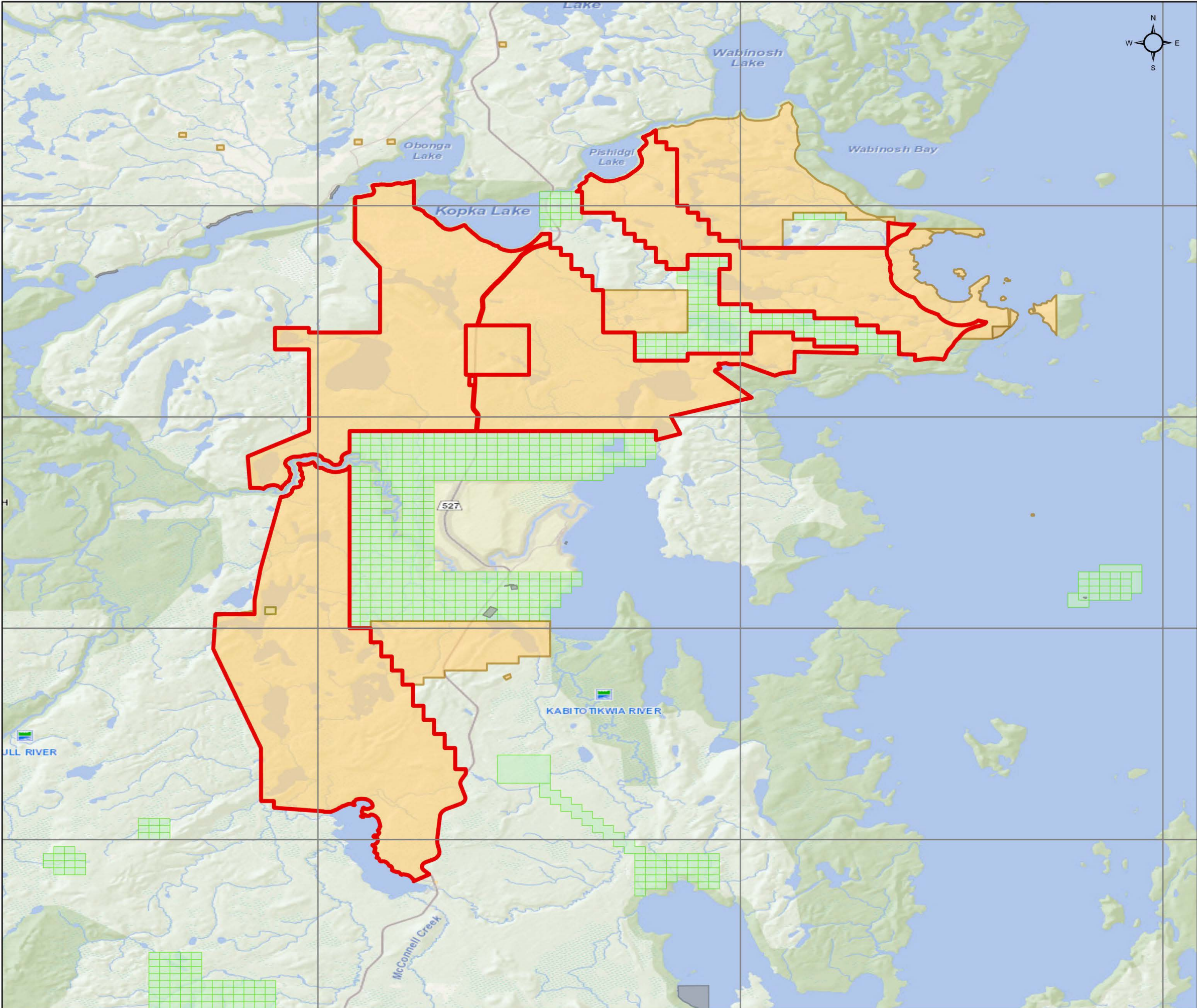
This order comes into effect on July 10, 2025, at 10:00 a.m. eastern standard time or eastern daylight savings time, as the case may be.



Afsana Qureshi, Assistant Deputy Minister
Mines and Minerals Division

Copies:



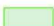
Senior Manager, Mining Lands Section, MEM, Sudbury
Provincial Mining Recorder, MEM, Sudbury
Provincial Lands Specialist – CLR



O-TB-129/25

Candide Lake, Chief Bay, English Bay, Havoc Lake, Nipigon House, Norwood Lake, Obonga Lake, Pangloss Lake and
Voltaire Lake Areas
Thunder Bay Mining Division




 Reopening Area: 38,561.54 ha

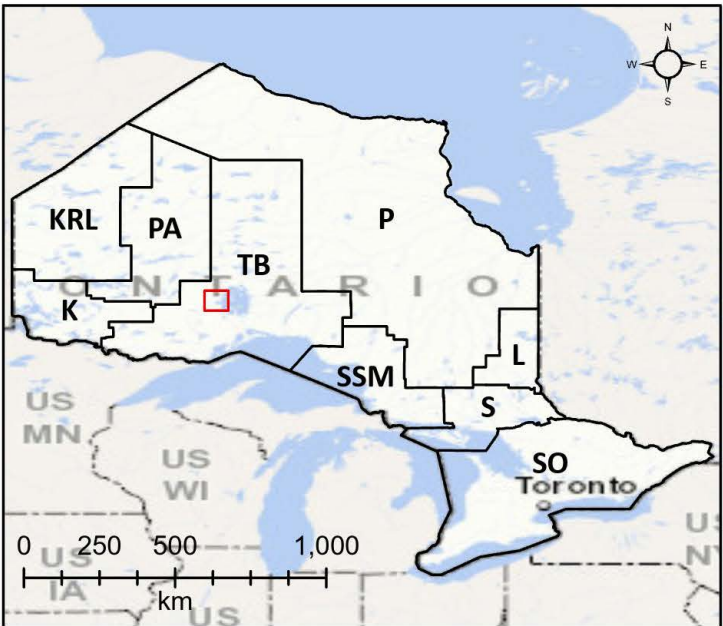
-  Withdrawal (Mining Only, Mining & Surface)
-  Withdrawal (Surface Only)
-  Order-in-Council
-  Mining Claims

Mining Land Tenure

-  Mining Land Tenure (Surface Only)
-  Mining Land Tenure (Mining Only)
-  Mining Land Tenure (Mining & Surface)

Non-Mining Land Tenure

-  Non-Mining Land Tenure (Surface Only)
-  Non-Mining Land Tenure (Mining Only)
-  Non-Mining Land Tenure (Mining & Surface)



0 5 10
km

Scale: 1:250,000
Date: 06/25/2025
Projection: NAD 1983 CSRS

