

**ORDER**

**SECTION 35, THE MINING ACT, R.S.O. 1990**

**ORDER NO. O-TB-33/17**

The SURFACE and MINING RIGHTS of the area outlined in red on the attached sketch, in the Priske Township (G-0631), Thunder Bay Mining Division, containing 256 hectares, more or less, are hereby REOPENED to prospecting, staking out, sale or lease.

This area was originally withdrawn by Orders W-TB-22/17 and W-TB-25/17, while the Ministry determined the status of the land.

This order comes into effect on Monday, July 4, 2017 at 08:00:01 a.m. standard time.

ORIGINAL SIGNED BY TONY SCARR

Tony Scarr, Provincial Mining Recorder  
Mining Lands Section  
Mines and Minerals Division

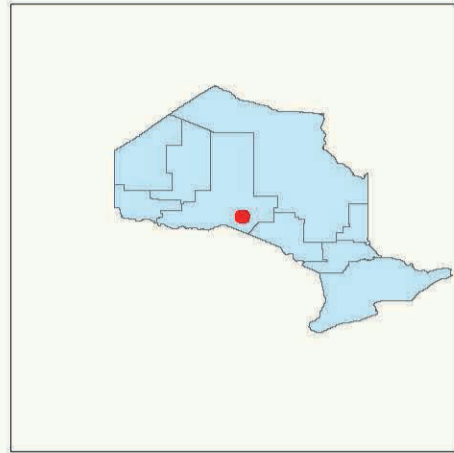
Copies:

Senior Manager, Mining Lands Section, MNDM, Sudbury

Provincial Mining Recorder, MNDM, Sudbury

Provincial Lands Specialist - CLR

O-TB 33/17  
Priske Township (G-0631)  
Thunder Bay Division

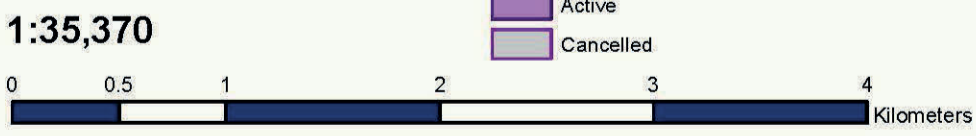
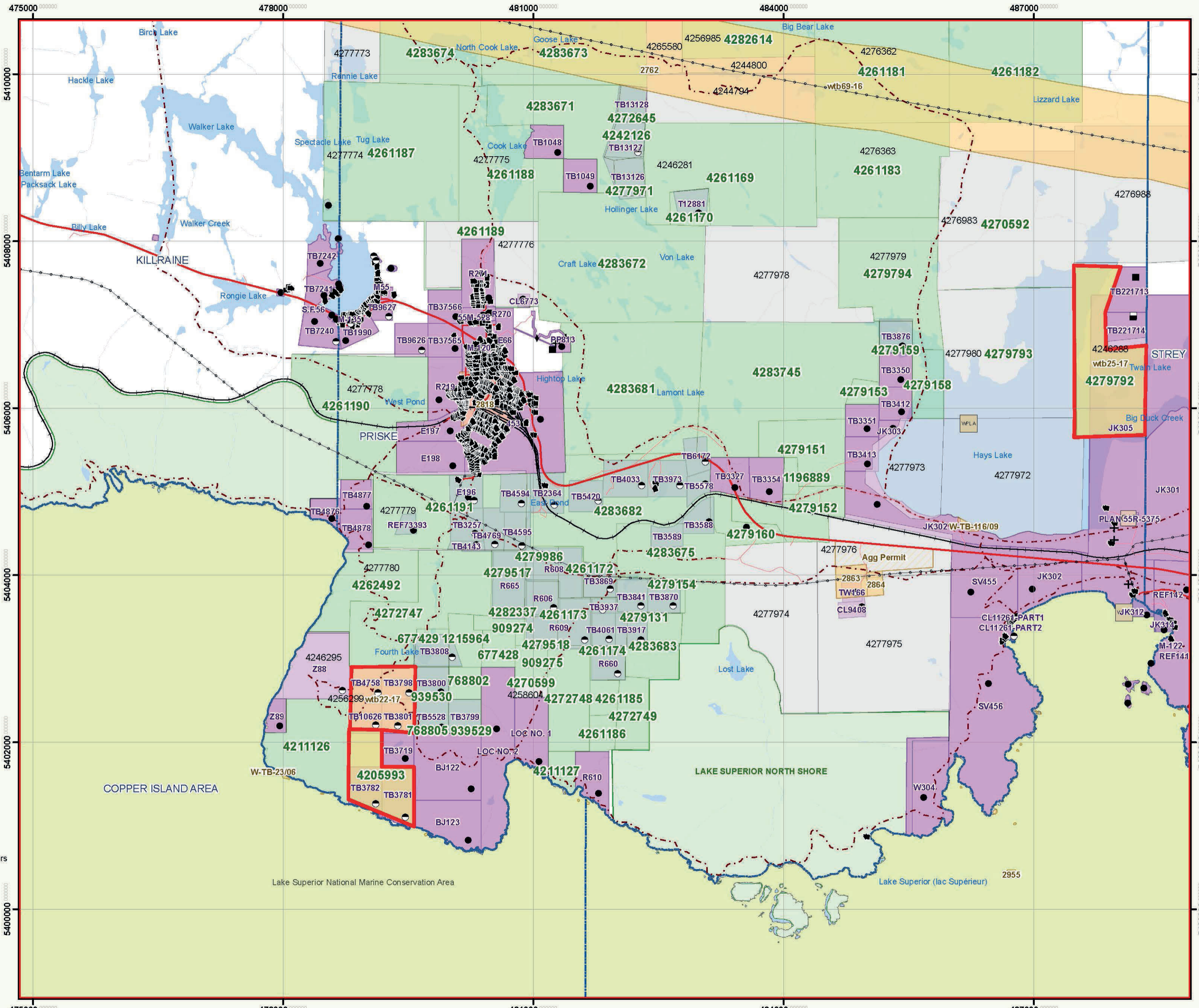


**Base Features**

- Area to be Re-Opened
- Tower
- Work Camp
- Utility Site
- MNDM Administrative Boundaries
- Lot Fabric Improved
- Utility Line - Hydro Line**
- Transmission Line
- Pipeline
- Road Segment**
- Other Existing Roads
- Primary Route principale
- Highway Autoroute
- Trail Segment
- Railway Segment
- Airports**
- Airports
- Airport Airstrip
- Airport Official
- Federal Protected Area**
- Federal Protected Area
- Federal Land Other
- Indian Reserve
- Waterbodies**
- River / Stream
- Waterbody
- Provincial Park Regulated**
- Provincial Park Regulated
- Conservation Reserve Regulated

**Mining Lands Features**

- Area to be Re-Opened
- Dispositions Symbols**
- Freehold Patent, S+M
- Freehold Patent, SRO
- Freehold Patent, MRO
- Leasehold Patent, S+M
- Leasehold Patent, SRO
- Leasehold Patent, MRO
- Licence of Occupation, S+M
- Licence of Occupation, SRO
- Licence of Occupation, MRO
- Licence of Occupation, not specified
- Tower
- Camp
- Unknown
- OIC Order in Council
- LUP Land Use Permit
- WPLA
- MNDM Alienations**
- Active, Withdrawal
- Active, Notice
- Cancelled, Withdrawal
- Cancelled, Notice
- MNDM Mining Claims**
- Active
- Cancelled
- Pending
- MNDM Dispositions**
- Active
- Cancelled



This map should not be relied on as a precise indicator of routes or locations, nor as a guide to navigation. The Ontario Ministry of Natural Resources (OMNR) shall not be liable in any way for the use of, or reliance upon, this map or any information on this map.

Il ne faut pas présumer que cette carte indique précisément les voies et les lieux, ni s'en servir comme guide à la navigation. Le ministère des Richesses naturelles de l'Ontario (MRN) n'assume aucune responsabilité quelle qu'elle soit relativement à l'utilisation de cette carte ou de la confiance qui serait mise en celle-ci.