

**ORDER**


**SECTION 35, THE MINING ACT, R.S.O. 1990**

**ORDER NO. O-TB-45/24**

The SURFACE RIGHTS and MINING RIGHTS of the area outlined in red on the attached sketch, situated in the Township of Gzowski, Thunder Bay Mining Division, containing 41.3 hectares more or less, were withdrawn from prospecting, mining claim registration, sale and lease by Order W-TB-03/24 while the Ministry determined the status of the lands.

Withdrawal Order W-TB-03/24 is hereby revoked and the lands are REOPENED for prospecting, mining claim registration, sale and lease, unless the lands are otherwise not open for these activities under any other provision of the Mining Act.

This order comes into effect upon signing.



Date: April 2, 2024

---

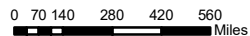
James Schwyer, Provincial Mining Recorder  
Mining Lands Section  
Mines and Minerals Division

Time: 4:19 pm

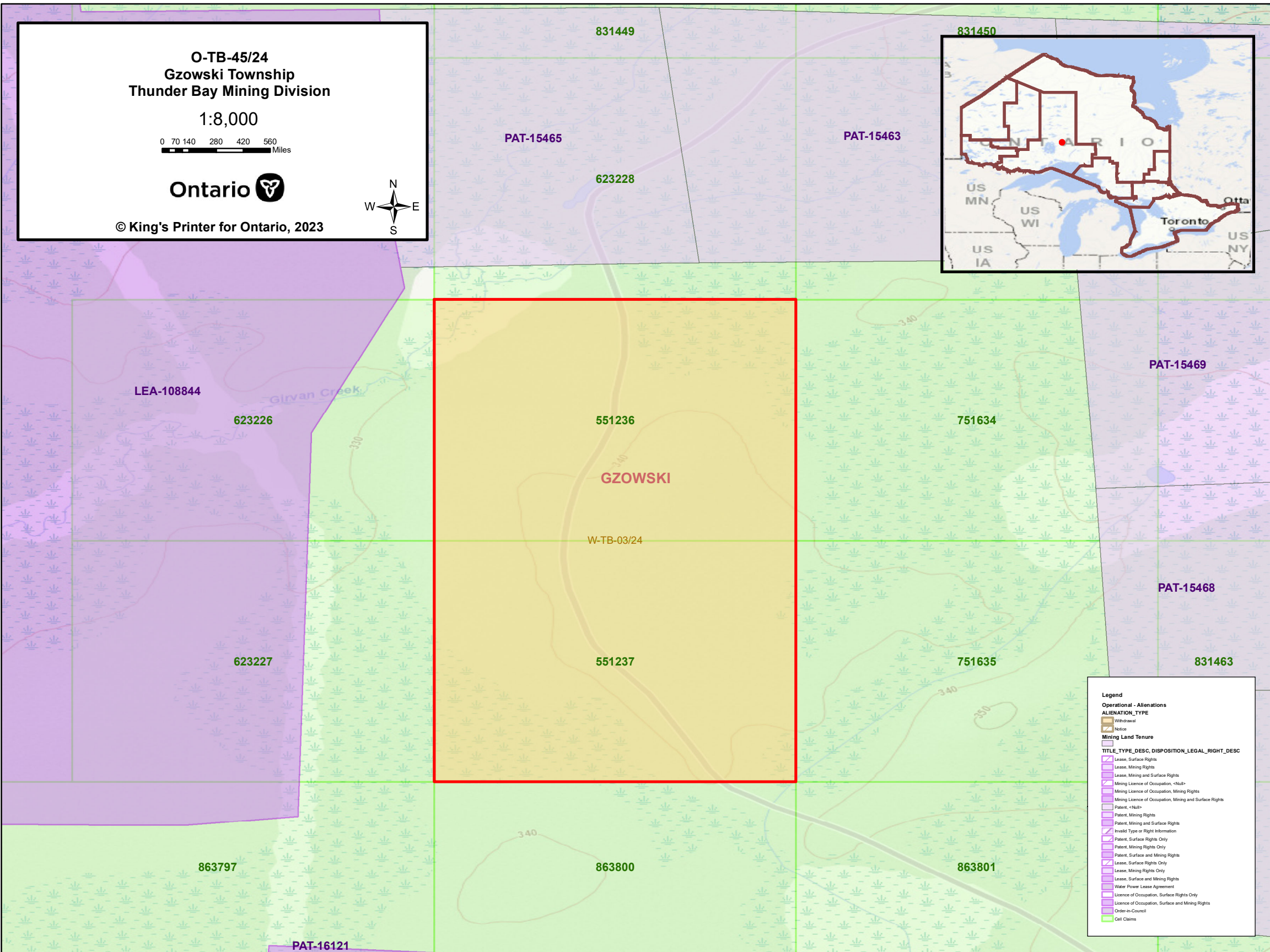
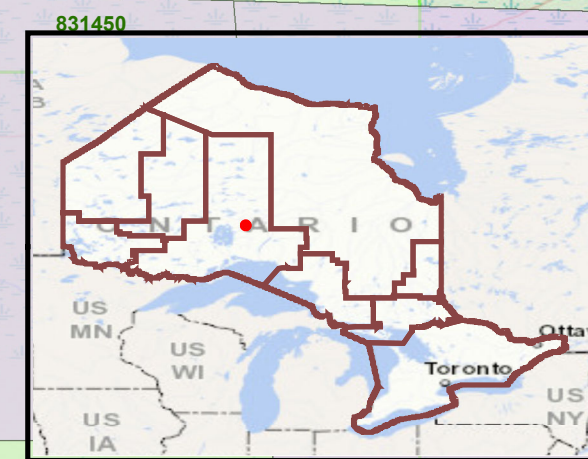
Copies:  
Senior Manager, Mining Lands Section, MINES, Sudbury  
Provincial Mining Recorder, MINES, Sudbury  
Provincial Lands Specialist – CLR

O-TB-45/24  
Gzowski Township  
Thunder Bay Mining Division

1:8,000



© King's Printer for Ontario, 2023



**Legend**

**Operational - Alienations**

**ALIENATION\_TYPE**

- Withdrawal
- Notice

**Mining Land Tenure**

**TITLE\_TYPE\_DESC, DISPOSITION\_LEGAL\_RIGHT\_DESC**

- Lease, Surface Rights
- Lease, Mining Rights
- Lease, Mining and Surface Rights
- Mining Licence of Occupation, <Null>
- Mining Licence of Occupation, Mining Rights
- Mining Licence of Occupation, Mining and Surface Rights
- Patent, <Null>
- Patent, Mining Rights
- Patent, Mining and Surface Rights
- Invalid Type or Right Information
- Patent, Surface Rights Only
- Patent, Mining Rights Only
- Patent, Surface and Mining Rights
- Lease, Surface Rights Only
- Lease, Mining Rights Only
- Lease, Surface and Mining Rights
- Water Power Lease Agreement
- Licence of Occupation, Surface Rights Only
- Licence of Occupation, Surface and Mining Rights
- Order-in-Council
- Cell Claims