

**ORDER**

**SECTION 35, THE MINING ACT, R.S.O. 1990**

**ORDER NO. O-TB-56/24**

The SURFACE RIGHTS and MINING RIGHTS of the area outlined in red on the attached sketch, situated in Areas of East Bay, Greenwich Lake, Hicks Lake, Onion Lake, Tartan Lake, Summit Lake, Sollas Lake and Willet Lake and in the Glen and Gzowski Townships, Thunder Baya Mining Division, containing 18644.709268 hectares more or less, were withdrawn from prospecting, mining claim registration, sale and lease by Order W-TB-37/24 while the Ministry determined the status of the lands.

Withdrawal Order W-TB-37/24 is hereby revoked and the lands are REOPENED for prospecting, mining claim registration, sale and lease, unless the lands are otherwise not open for these activities under any other provision of the Mining Act.

This order comes into effect on May 01<sup>st</sup>, 2024, at 10:00 a.m. eastern standard time or eastern daylight savings time, as the case may be.



---

James Schwyer, Provincial Mining Recorder  
Mining Lands Section  
Mines and Minerals Division

**Copies:**

Senior Manager, Mining Lands Section, MINES, Sudbury  
Provincial Mining Recorder, MINES, Sudbury  
Provincial Lands Specialist – CLR



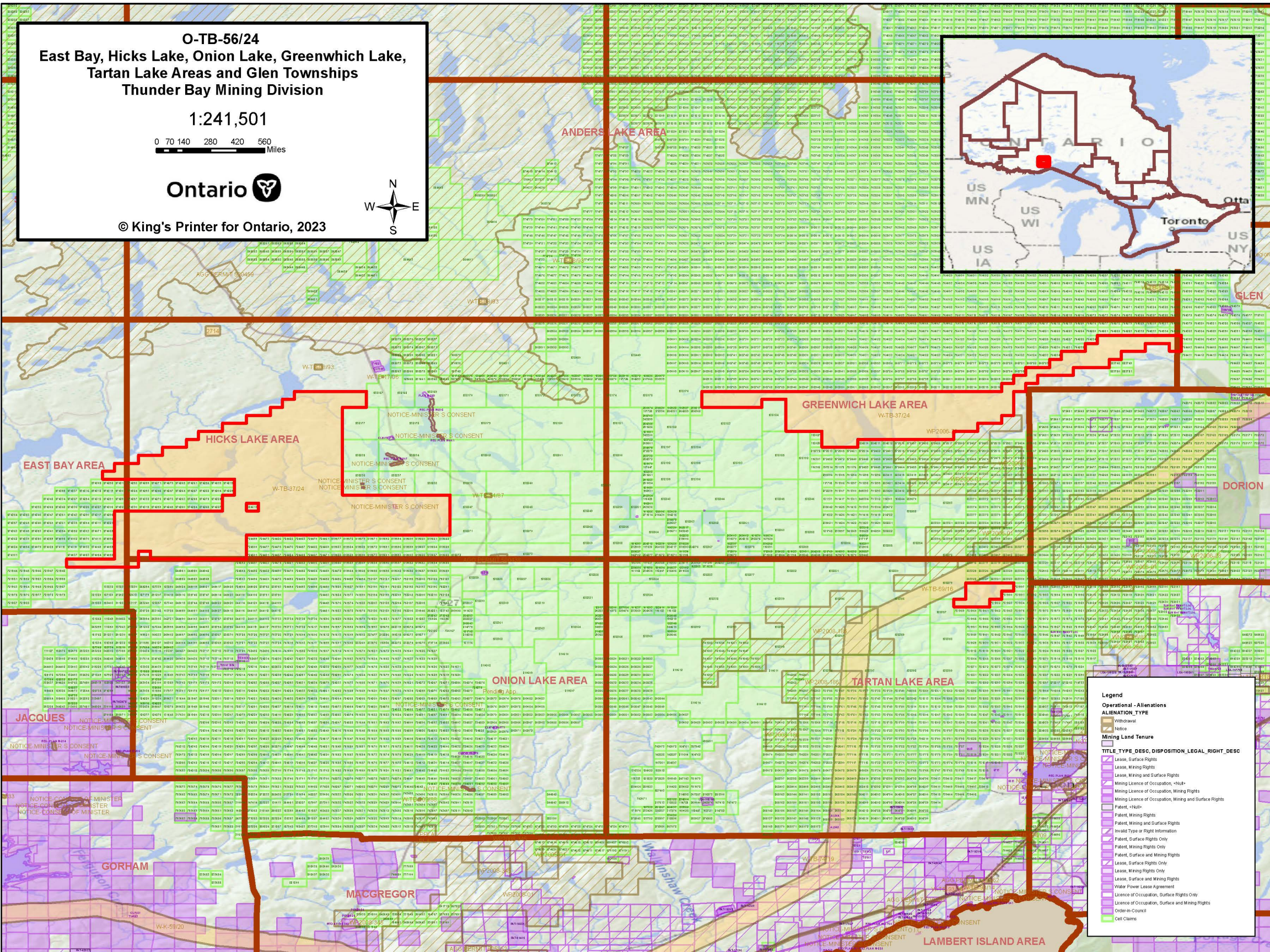
O-TB-56/24  
East Bay, Hicks Lake, Onion Lake, Greenwich Lake,  
Tartan Lake Areas and Glen Townships  
Thunder Bay Mining Division

1:241,501

0 70 140 280 420 560 Miles



© King's Printer for Ontario, 2023





O-TB-56/24

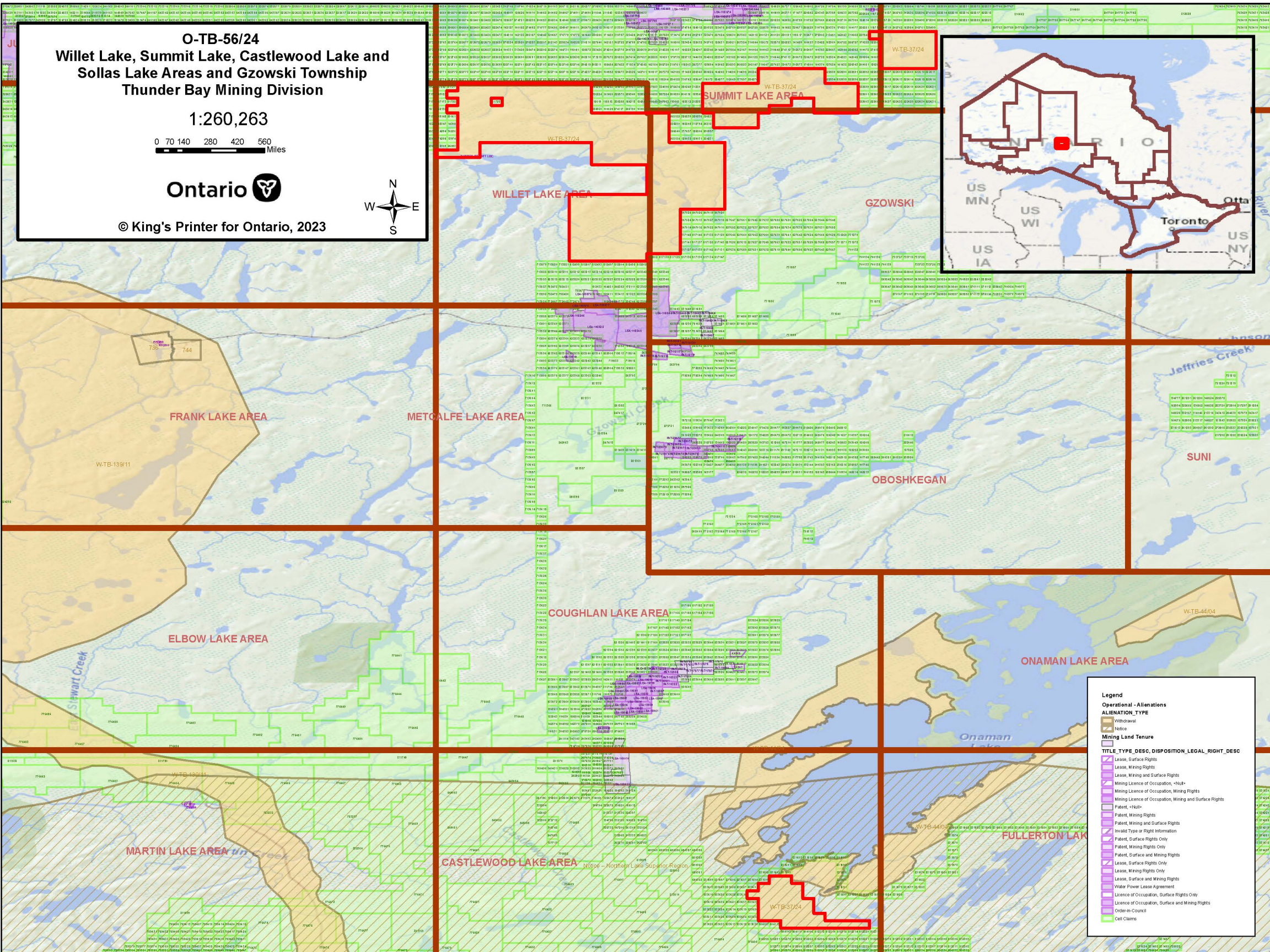
Willet Lake, Summit Lake, Castlewood Lake and  
Sollas Lake Areas and Gzowski Township  
Thunder Bay Mining Division

1:260,263

0 70 140 280 420 560 Miles



© King's Printer for Ontario, 2023



W-TB-37/24

SUMMIT LAKE AREA

WILLET LAKE AREA

GZOWSKI

FRANK LAKE AREA

METCALFE LAKE AREA

OBOSHKEGAN

ELBOW LAKE AREA

COUGHLAN LAKE AREA

ONAMAN LAKE AREA

MARTIN LAKE AREA

CASTLEWOOD LAKE AREA

FULLERTON LAKE AREA

**Legend**

**Operational - Aliations**

**ALIENATION TYPE**

- Withdrawal
- Notice

**Mining Land Tenure**

**TITLE TYPE\_DESC, DISPOSITION\_LEGAL\_RIGHT\_DESC**

- Lease, Surface Rights
- Lease, Mining Rights
- Lease, Mining and Surface Rights
- Mining Licence of Occupation, Mining Rights
- Mining Licence of Occupation, Mining and Surface Rights
- Patent, Mining Rights
- Patent, Mining and Surface Rights
- Invalid Type or Right Information
- Patent, Surface Rights Only
- Patent, Surface and Mining Rights
- Lease, Surface Rights Only
- Lease, Mining Rights Only
- Lease, Surface and Mining Rights
- Water Power Lease Agreement
- Licence of Occupation, Surface Rights Only
- Licence of Occupation, Surface and Mining Rights
- Order-in-Council
- Cell Claims