

**ORDER**

**SECTION 35, THE MINING ACT, R.S.O. 1990**

**ORDER NO. W-K-63/24**

The SURFACE RIGHTS and MINING RIGHTS of the area outlined in red on the attached sketch, situated in the Areas of Rowan Lake and Dogpaw Lake, Kenora Mining Division, containing 2634.38 hectares more or less, are hereby WITHDRAWN from prospecting, mining claim registration, sale and lease.

This area is WITHDRAWN while the Ministry determines the status of the lands.

Saving, excepting and reserving hereto and herefrom, all other lands patented, sold, leased or otherwise alienated by the Crown at the date of this Order.

Any alienated lands lying within the limits of these withdrawn areas that revert to the Crown subsequent to the date of this Order will automatically be considered to be withdrawn as part of this Order.

This order comes into effect upon signing.



Date: June 4, 2024

---

James Schwyer, Provincial Mining Recorder  
Mining Lands Section  
Mines and Minerals Division

Time: 3:14 pm

**Copies:**

Senior Manager, Mining Lands Section, MINES, Sudbury

Provincial Mining Recorder, MINES, Sudbury

Provincial Lands Specialist – CLR



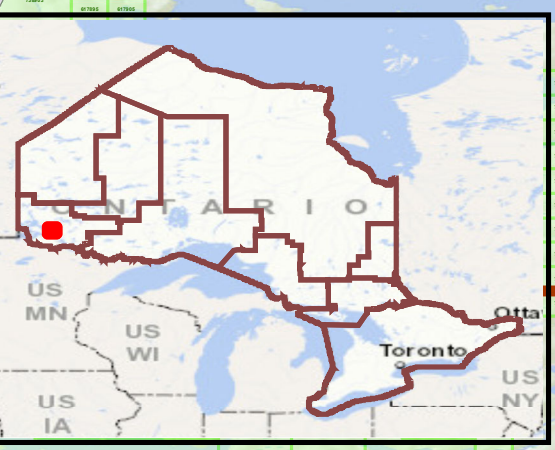
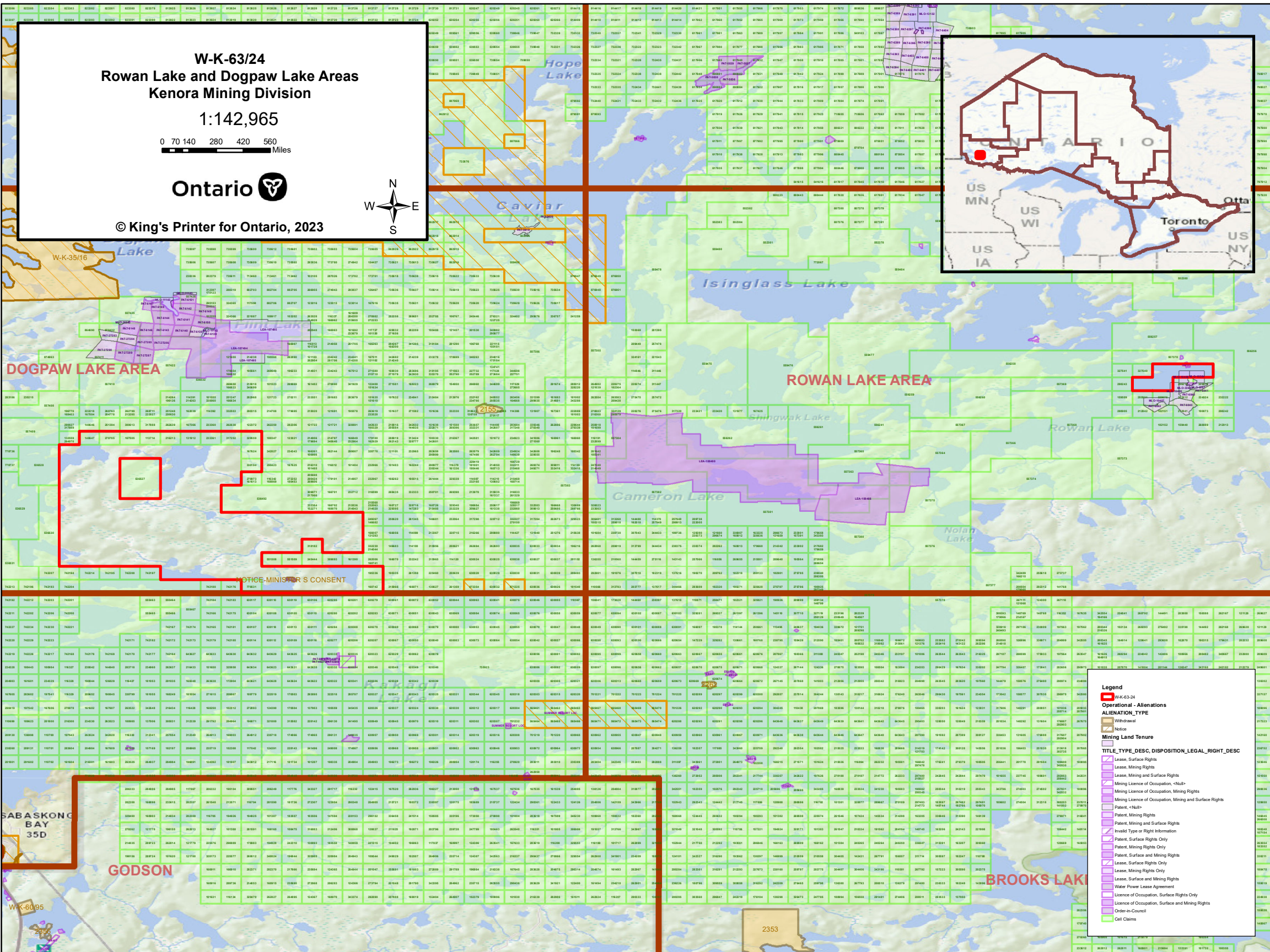
W-K-63/24  
Rowan Lake and Dogpaw Lake Areas  
Kenora Mining Division

1:142,965

0 70 140 280 420 560 Miles



© King's Printer for Ontario, 2023



- Legend**
- W-K-63/24
  - Operational - Alienations
  - ALIENATION TYPE
  - Withdrawal
  - Notice
  - Mining Land Tenure
  - TITLE\_TYPE\_DESC, DISPOSITION\_LEGAL\_RIGHT\_DESC
    - Lease, Surface Rights
    - Lease, Mining Rights
    - Lease, Mining and Surface Rights
    - Mining Licence of Occupation, <Nul>
    - Mining Licence of Occupation, Mining Rights
    - Patent, <Nul>
    - Patent, Mining Rights
    - Patent, Mining and Surface Rights
    - Invalid Type or Right Information
    - Patent, Surface Rights Only
    - Patent, Mining Rights Only
    - Patent, Surface and Mining Rights
    - Lease, Surface Rights Only
    - Lease, Mining Rights Only
    - Lease, Surface and Mining Rights
    - Water Power Lease Agreement
    - Licence of Occupation, Surface Rights Only
    - Licence of Occupation, Surface and Mining Rights
    - Order-in-Council
    - Cell Claims