

ORDER

SECTION 35, THE MINING ACT, R.S.O. 1990

ORDER NO. W-ON-03/20

The SURFACE RIGHTS and MINING RIGHTS of the areas outlined in red on the attached sketches, situated in the Townships of Butt, Proudfoot, Bond and McTavish, containing 862 hectares more or less, are hereby WITHDRAWN from prospecting, mining claim registration, sale and lease.

These areas are WITHDRAWN while the Ministry determines the status of the lands.

Saving, excepting and reserving hereto and herefrom, all other lands patented, sold, leased or otherwise alienated by the Crown at the date of this Order.

Any alienated lands lying within the limits of these withdrawn areas that revert to the Crown subsequent to the date of this Order will automatically be considered withdrawn as part of this Order.

This order comes into effect upon signing.

Date: January 10, 2020

Originally signed by Patrick Brown

Patrick Brown, A\Provincial Mining Recorder
Mining Lands Section
Mines and Minerals Division

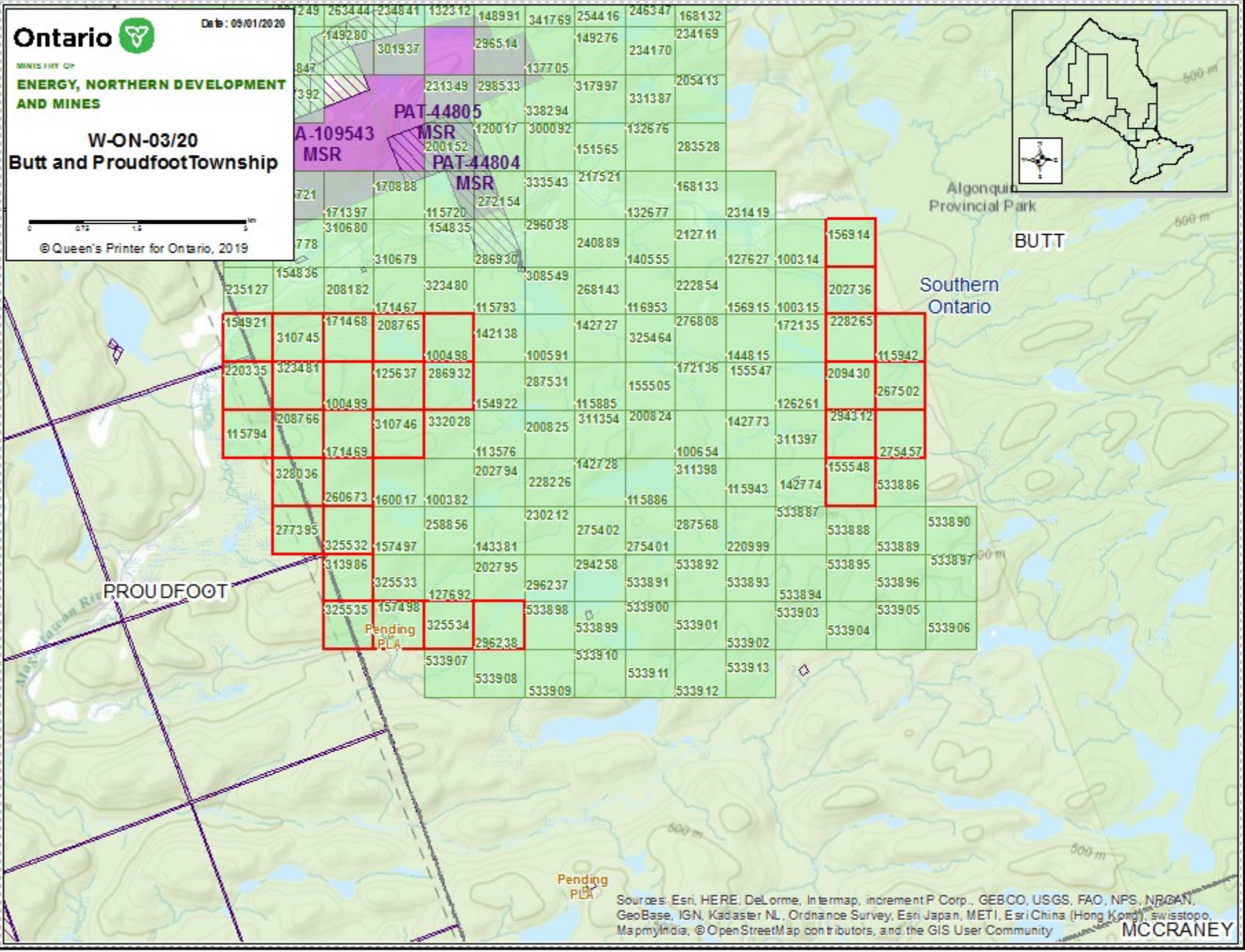
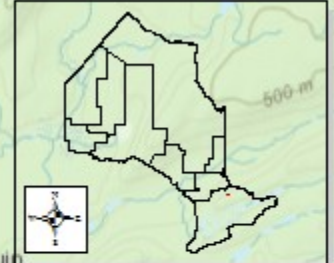
Time: 1:18pm

Copies:

Senior Manager, Mining Lands Section, ENDM, Sudbury
Provincial Mining Recorder, ENDM, Sudbury
Provincial Lands Specialist – CLR

**W-ON-03/20
Butt and Proudfoot Township**

0 0.75 1.5 3 km
© Queen's Printer for Ontario, 2019

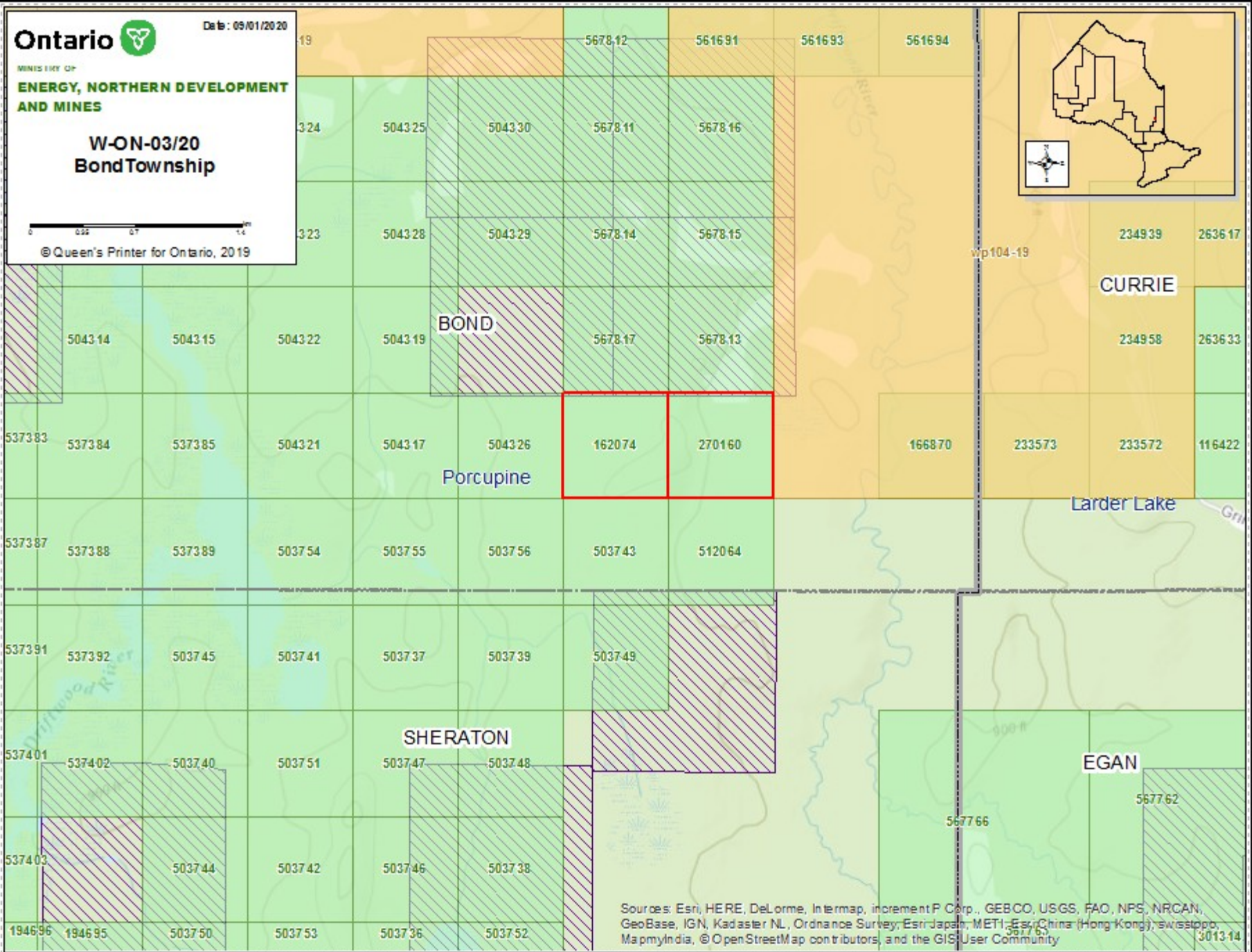
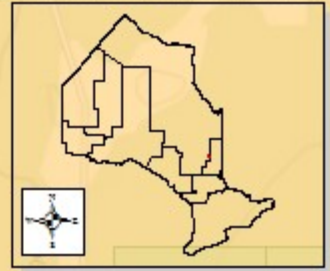


Pending
PLA

W-ON-03/20
Bond Township



© Queen's Printer for Ontario, 2019

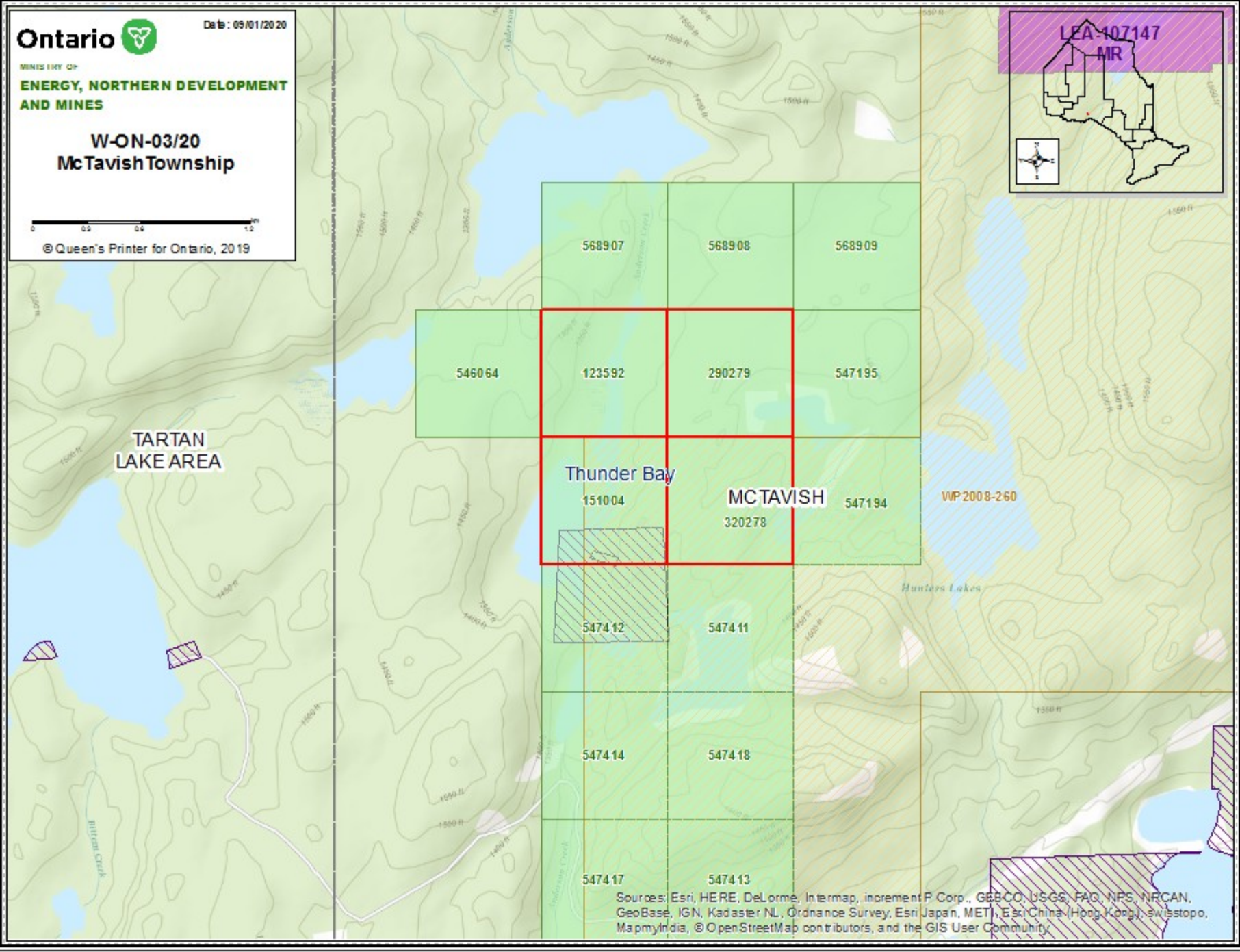
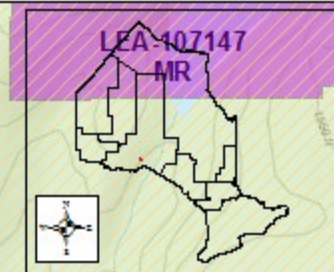


Sources: Esri, HERE, DeLorme, Intermap, increment P Corp., GEBCO, USGS, FAO, NPS, NRCAN, GeoBase, IGN, Kadaster NL, Ordnance Survey, Esri Japan, METI, Esri China (Hong Kong), Swisstopo, MapmyIndia, © OpenStreetMap contributors, and the GIS User Community

**W-ON-03/20
McTavish Township**



© Queen's Printer for Ontario, 2019



Sources: Esri, HERE, DeLorme, Intermap, increment P Corp., GEBCO, USGS, FAO, NPS, NRCAN, GeoBase, IGN, Kadaster NL, Ordnance Survey, Esri Japan, METI, Esri China (Hong Kong), Swisstopo, MapmyIndia, © OpenStreetMap contributors, and the GIS User Community