

ORDER

SECTION 35, THE MINING ACT, R.S.O. 1990

ORDER NO. W-ONT-135/24

The SURFACE RIGHTS and MINING RIGHTS of the area outlined in red on the attached sketch, situated in the Townships of Bond, Bowman, Hislop, Sheraton and Thomas, Larder Lake and Porcupine Mining Divisions, containing 2311.87 hectares more or less, are hereby WITHDRAWN from prospecting, mining claim registration, sale and lease.

This area is WITHDRAWN while the Ministry determines the status of the lands.

Saving, excepting and reserving hereto and herefrom, all other lands patented, sold, leased or otherwise alienated by the Crown at the date of this Order.

Any alienated lands lying within the limits of these withdrawn areas that revert to the Crown subsequent to the date of this Order will automatically be considered to be withdrawn as part of this Order.

This order comes into effect upon signing.

Date: August 30, 2024

Time: 11:06 am



Scott Cousineau, Senior Manager
Mining Lands Section
Mines and Minerals Division

Copies:

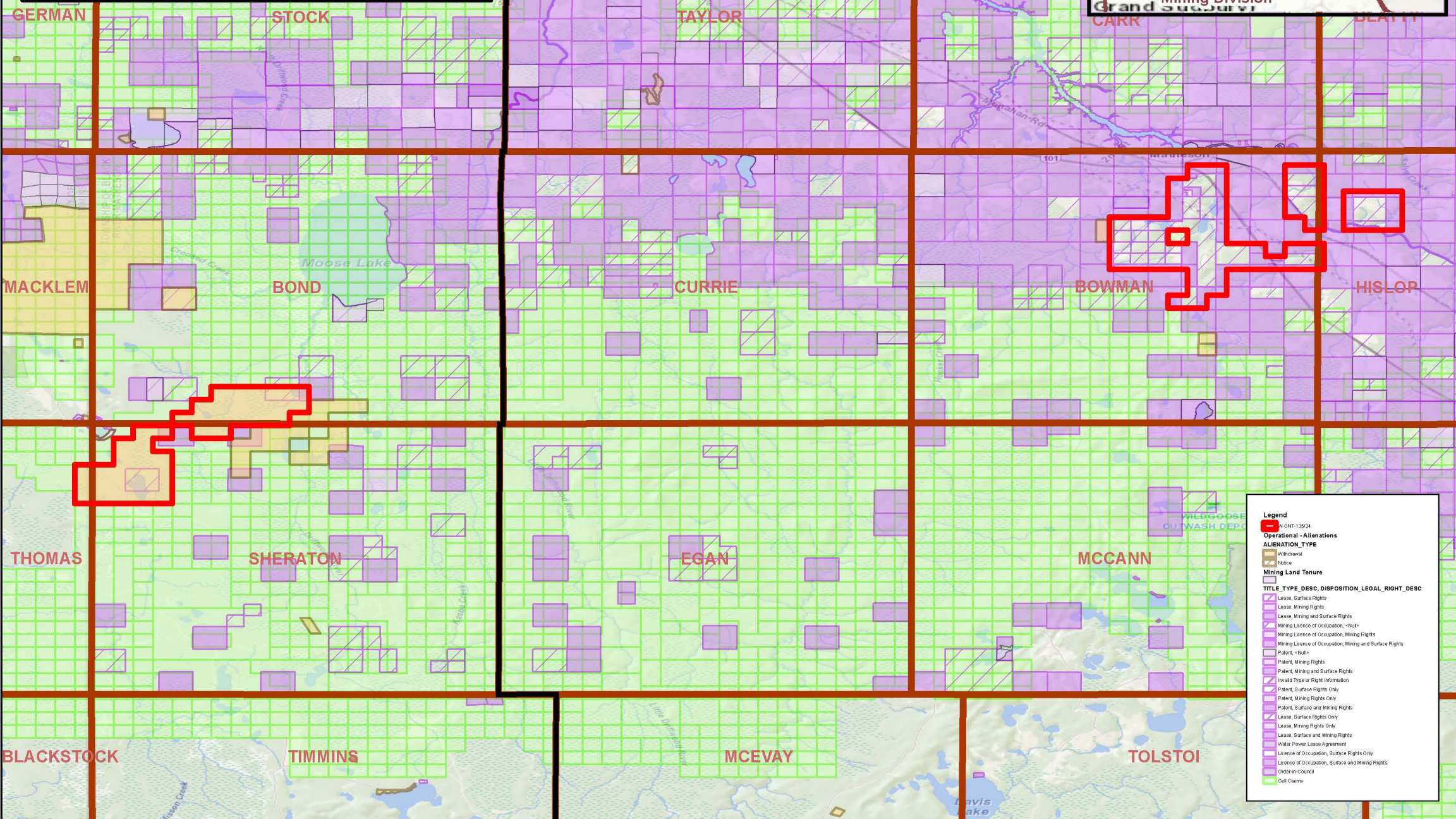
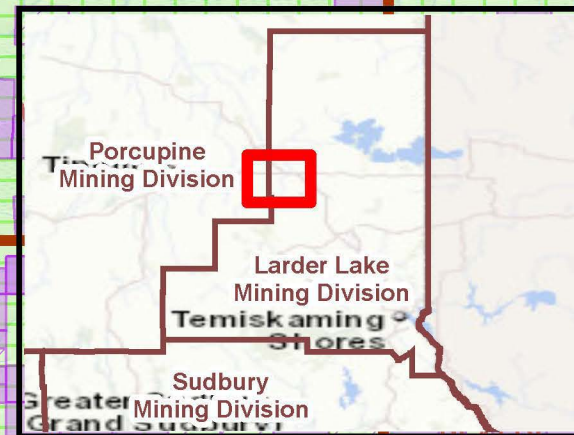
Senior Manager, Mining Lands Section, MINES, Sudbury
Provincial Mining Recorder, MINES, Sudbury
Provincial Lands Specialist – CLR

W-ONT-135/24
Hislop, Sheraton, Thomas
Bowman & Bond Twps.
Larder Lake Mining Division
Porcupine Mining Division

1:170,000



© King's Printer for Ontario, 2024



Legend

W-ONT-135/24

Operational - Alienations

ALIENATION_TYPE

- Withdrawal
- Notice

Mining Land Tenure

TITLE_TYPE_DESC,DISPOSITION_LEGAL_RIGHT_DESC

- Lease, Surface Rights
- Lease, Mining Rights
- Lease, Mining and Surface Rights
- Mining Licence of Occupation, <null>
- Mining Licence of Occupation, Mining Rights
- Mining Licence of Occupation, Mining and Surface Rights
- Patent, <null>
- Patent, Mining Rights
- Patent, Mining and Surface Rights
- Invalid Type or Right Information
- Patent, Surface Rights Only
- Patent, Mining Rights Only
- Patent, Surface and Mining Rights
- Lease, Surface Rights Only
- Lease, Mining Rights Only
- Lease, Surface and Mining Rights
- Water Power Lease Agreement
- Licence of Occupation, Surface Rights Only
- Licence of Occupation, Surface and Mining Rights
- Order-in-Council
- Cell Claims