

ORDER

SECTION 35, THE MINING ACT, R.S.O. 1990

ORDER NO. W-ONT-140/25

The SURFACE RIGHTS and MINING RIGHTS of the area outlined in red on the attached sketch, situated in the Townships of Bicknell, BMA 513 833, BMA 513 834, BMA 513 841, BMA 513 842, BMA 514 833, BMA 514 834, BMA 514 842, Burrell, and Rowlandson and in the Areas of Ash River, Byrnes Lake, Cochrane Lake, Coltman Island, Dent Lake, Downie Lake, East of Kingfisher River, East of Pembina Island, East of Ridge River, East of Squirrel River, East of Trilsbeck Lake, English River Post, Feagan Lake, Fox River, Huckell Lake, Jog Lake, Kabinakagami River, Kenogami Rapids, Kenogami River, Killick Lake, Kingfisher River, Lewis Lake, Limestone Rapids, Little Ash River, Little Drowning River, Loon Island, Luhta Lake, Melanson Lake, Michel Creek, Moir Lake, Mouth of Little Drowning River, Mundino River, Nash Lake, Nemasa River, North of Crawford Lake, North of Dent Lake, North of English River Post, North of Feagan Lake, North of Fox River, North of Jog Lake, North of Moir Lake, North of Pembina Island, North of Pivabiska River, North of Ridge Lake, North of Rowlandson, Pembina Island, Pitukupi Lake, Pitukupi River, Pledger Lake, Ridge Lake, Ridge River, South of Coltman Island, South of English River Post, South of Pledger Lake, Squirrel River, Tinney Lake, Trilsbeck Lake, Watistiguam River, West of English River Post, West of Melanson Lake, West of Ridge Lake and West of Trilsbeck Lake, Porcupine and Thunder Bay Mining Divisions, containing 798,558.95 hectares more or less, are hereby WITHDRAWN from prospecting, mining claim registration, sale and lease.

This withdrawal order has been requested by the Ministry of Natural Resources to support the Constance Lake First Nation's Community Based Land Use Plan.

Saving, excepting and reserving hereto and herefrom, all other lands patented, sold, leased or otherwise alienated by the Crown at the date of this Order.

Any alienated lands lying within the limits of these withdrawn areas that revert to the Crown subsequent to the date of this Order will automatically be considered to be withdrawn as part of this Order.

This order comes into effect upon signing.

Date: August 20, 2025

Time: 10:32 am



Michael Loken for Afsana Qureshi, Assistant Deputy Minister
Mines and Minerals Division

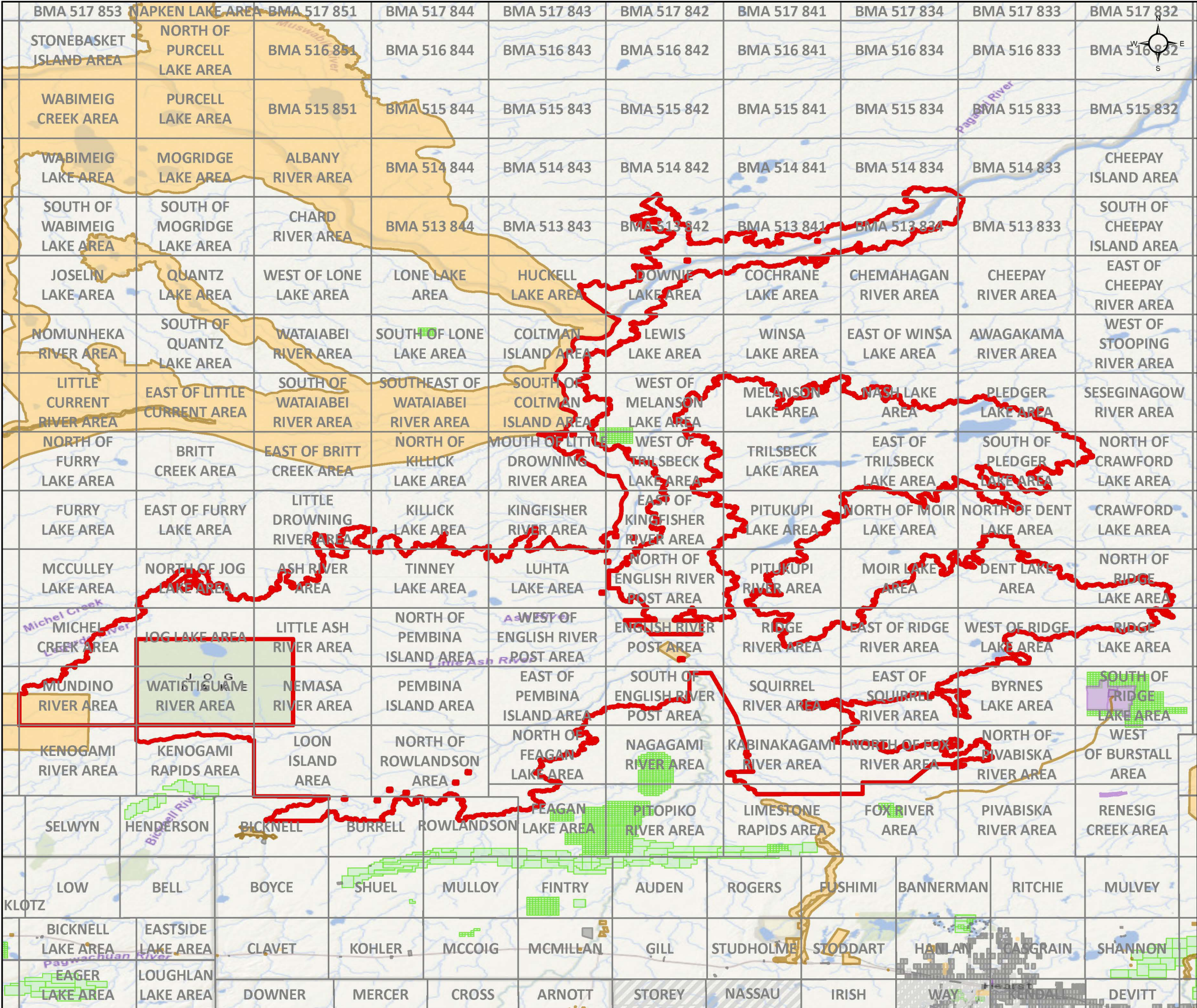


Copies:

Senior Manager, Mining Lands Section, MEM, Sudbury

Provincial Mining Recorder, MEM, Sudbury

Provincial Lands Specialist – CLR



W-ONT-140/25

Multiple Townships & Areas
Porcupine and Thunder Bay Mining Divisions

**Withdrawal Area**

 Withdrawal (Mining Only, Mining & Surface)

 Withdrawal (Surface Only)

 Mining Claims

Mining Land Tenure

 Mining Land Tenure (Surface Only)

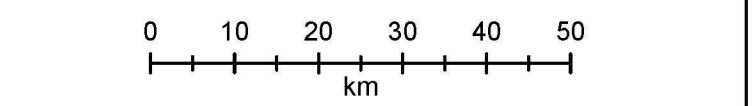
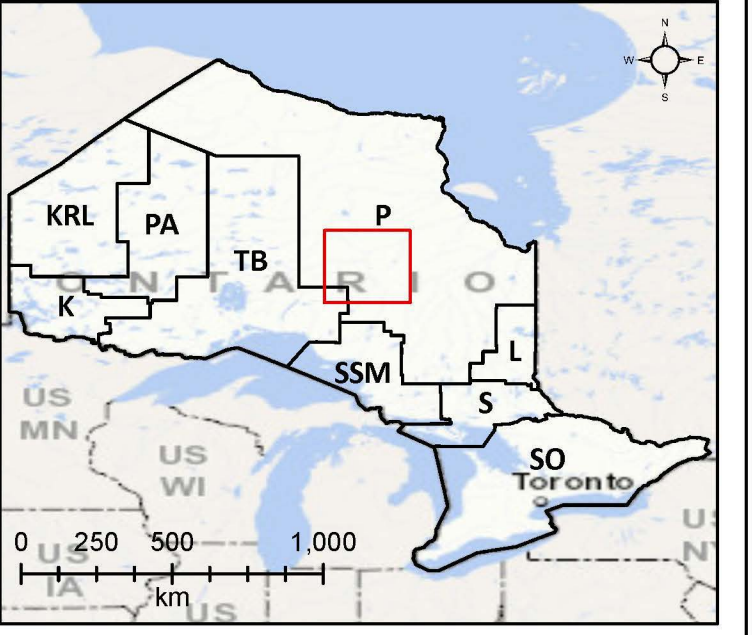
 Mining Land Tenure (Mining Only)

 Mining Land Tenure (Mining & Surface)

Non-Mining Land Tenure

 Non-Mining Land Tenure (Surface Only)

 Non-Mining Land Tenure (Mining & Surface)



Scale: 1:900,000
Date: 2025-07-23
Projection: NAD 1983 CSRS