

**ORDER**

**SECTION 35, THE MINING ACT, R.S.O. 1990**

**ORDER NO. W-ONT-58/24**

**WHEREAS** pursuant to subsection 35(1) of the Mining Act, the Minister may, by order signed by him or her, withdraw from prospecting, mining claim registration, sale and lease any lands, mining rights or surface rights that are the property of the Crown, and the lands, mining rights or surface rights shall remain withdrawn until reopened by the Minister;

**AND WHEREAS** the Minister's authority to make an order under subsection 35(1) of the Mining Act has been delegated to staff of the Ministry of Mines including to the Assistant Deputy Minister, Mines and Minerals Division;

**AND WHEREAS** The Ministry of Indigenous Affairs and First Nations Economic Reconciliation has requested that the areas described below be withdrawn in order to facilitate the resolution and negotiated settlement of a boundary claim by Nipissing First Nation.

**AND WHEREAS**, although this withdrawal order will continue unless and until it is revoked by an order made pursuant to subsection 35(4) of the Mining Act, the ministry intends to review the withdrawal within three years of the date of this Order to ascertain whether it is appropriate to maintain the withdrawal in light of the status of efforts by Ontario, and Nipissing First Nation to establish land for settlement for Nipissing First Nation's boundary claim;

**I HEREBY ORDER:**

Pursuant to subsection 35(1) of the Mining Act, that the SURFACE AND MINING RIGHTS of the areas outlined in red on the map attached as Schedule "A", situated in the Townships of Beaucage, Bertram, Blyth, Caldwell, Charlton, Falconer, Gladman, Grant, Gurd, Hardy, Himsworth, Latchford, Loudon, Lyman, Macpherson, Martland, McLaren, Merrick, Nipissing, Notman, Patterson, Pedley, Springer and Widdifield, Southern Ontario and Sudbury Mining Divisions, containing 64,752.69 hectares more or less, be WITHDRAWN from prospecting, mining claim registration, sale and lease.

This order comes into effect upon signing.

Date: October 25, 2024

Time: 5:57 pm



Afsana Qureshi, Assistant Deputy Minister  
Mines and Minerals Division

Copies:

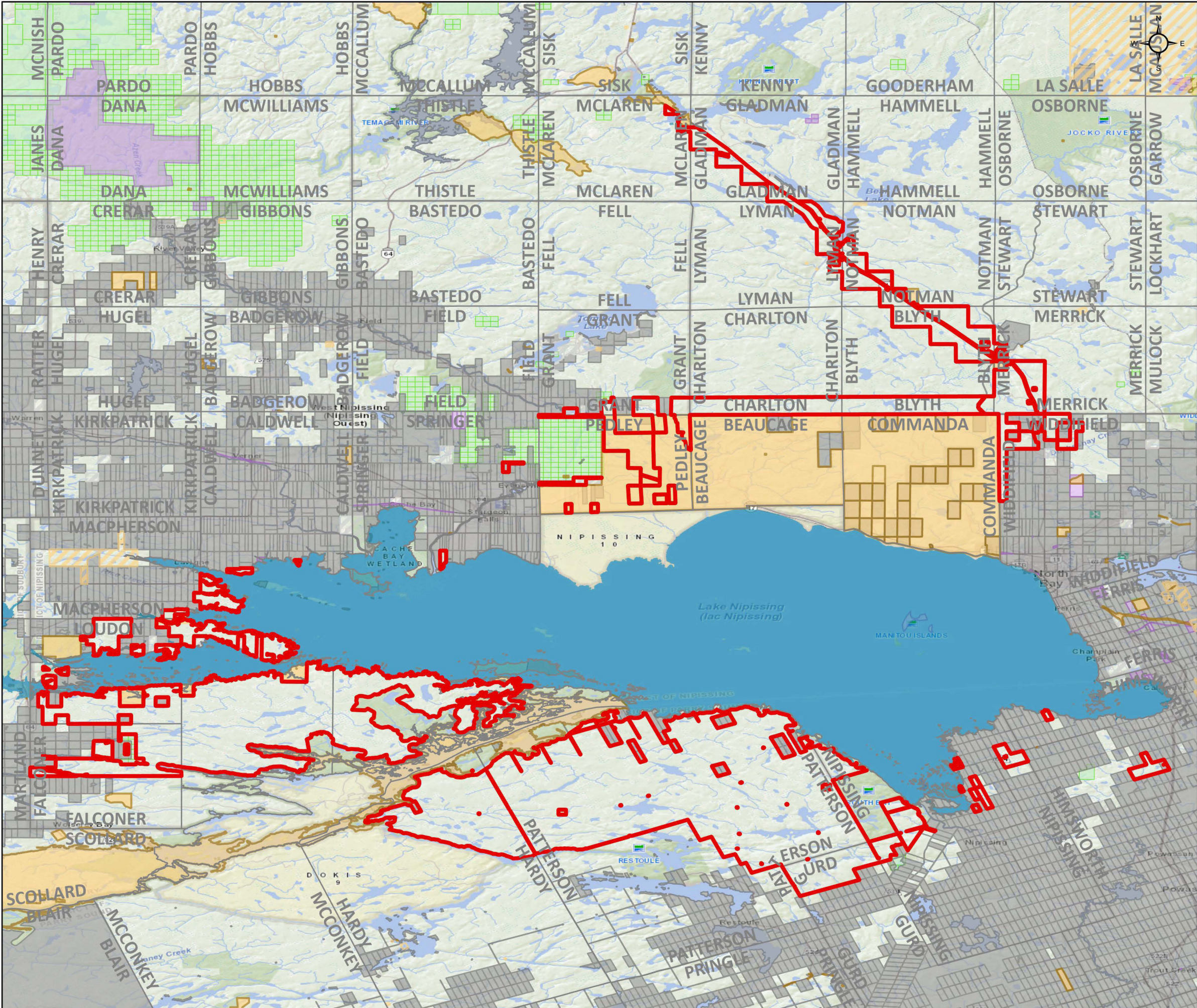
Provincial Mining Recorder, MINES

Senior Manager, Mining Lands Section, MINES

Director, Indigenous Consultation and Partnerships Branch, MINES

Provincial Lands Specialist, Crown Land Registry, MNRF



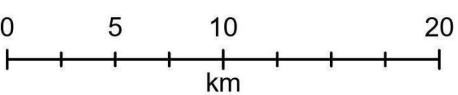


W-ONT-58/24

Multiple Townships  
Sudbury & Southern Ontario Mining Divisions

 Withdrawal Area: 64,730.47 ha

-  Withdrawal (Mining Only, Mining & Surface)
-  Withdrawal (Surface Only)
-  Order-in-Council
-  Mining Claims
- Mining Land Tenure**
  -  Mining Land Tenure (Surface Only)
  -  Mining Land Tenure (Mining Only)
  -  Mining Land Tenure (Mining & Surface)
- Non-Mining Land Tenure**
  -  Non-Mining Land Tenure (Surface Only)
  -  Non-Mining Land Tenure (Mining Only)
  -  Non-Mining Land Tenure (Mining & Surface)



Scale: 1:350,000  
Date: 2024-10-17  
Projection: NAD 1983 CSRS



© King's Printer for Ontario, 2024