

ORDER

SECTION 35, THE MINING ACT, R.S.O. 1990

ORDER NO. W-S-117/24

The SURFACE RIGHTS and MINING RIGHTS of the area outlined in red on the attached sketch, situated in the Townships of Dunlop and Shibananing, Sudbury Mining Division, containing 801.36 hectares more or less, are hereby WITHDRAWN from prospecting, mining claim registration, sale and lease.

This area is WITHDRAWN while the Ministry determines the status of the lands.

Saving, excepting and reserving hereto and herefrom, all other lands patented, sold, leased or otherwise alienated by the Crown at the date of this Order.

Any alienated lands lying within the limits of these withdrawn areas that revert to the Crown subsequent to the date of this Order will automatically be considered to be withdrawn as part of this Order.

This order comes into effect upon signing.

Date: August 12, 2024

James Schwyer

James Schwyer, Provincial Mining Recorder
Mining Lands Section
Mines and Minerals Division

Time: 12:10 pm

Copies:

Senior Manager, Mining Lands Section, MINES, Sudbury
Provincial Mining Recorder, MINES, Sudbury
Provincial Lands Specialist – CLR

W-S-117/24

Shibananing and Dunlop Townships

Sudbury Mining Division

1:36,160

Ontario

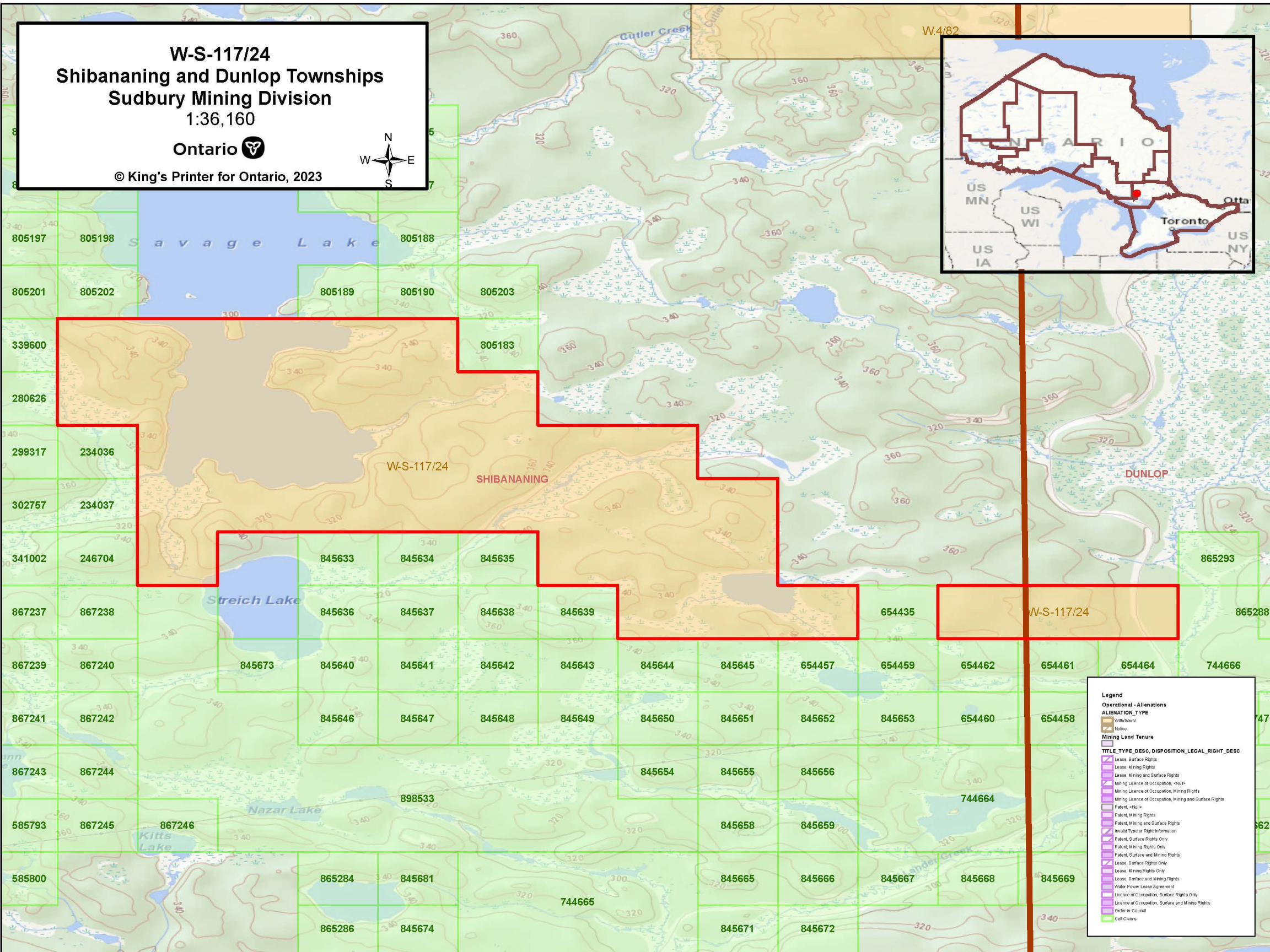
© King's Printer for Ontario, 2023

N

W

E

S



Legend

Operational - Aliens

ALIENATION TYPE

Withdrawal

Notice

Mining Land Tenure

TITLE TYPE_DESC,DISPOSITION_LEGAL_RIGHT_DESC

Lease, Surface Rights

Lease, Mining Rights

Lease, Mining and Surface Rights

Mining Licence of Occupation, <html>

Mining Licence of Occupation, Mining Rights

Mining Licence of Occupation, Mining and Surface Rights

Patent, <html>

Patent, Mining Rights

Patent, Mining and Surface Rights

Invalid Type or Right Information

Patent, Surface Rights Only

Patent, Mining Rights Only

Patent, Surface and Mining Rights

Lease, Surface Rights Only

Lease, Mining Rights Only

Lease, Surface and Mining Rights

Water Power Lease Agreement

Licence of Occupation, Surface Rights Only

Licence of Occupation, Surface and Mining Rights

Order-in-Council

Cell Claims