

ORDER

SECTION 35, THE MINING ACT, R.S.O. 1990

ORDER NO. W-TB-132/25

WHEREAS pursuant to subsection 35(1) of the Mining Act, the Minister may, by order signed by him or her, withdraw from prospecting, mining claim registration, sale and lease any lands, mining rights or surface rights that are the property of the Crown, and the lands, mining rights or surface rights shall remain withdrawn until reopened by the Minister;

AND WHEREAS the Minister's authority to make an order under subsection 35(1) of the Mining Act has been delegated to staff of the Ministry of Energy and Mines including to the Assistant Deputy Minister, Mines and Minerals Division;

AND WHEREAS The Ministry of Indigenous Affairs and First Nations Economic Reconciliation has requested that the areas described below be withdrawn in order to facilitate the resolution and negotiated settlement of a boundary claim by Kiashke Zaaging Anishinaabek;

AND WHEREAS, although this withdrawal order will continue unless and until it is revoked by an order made pursuant to subsection 35(4) of the Mining Act, the ministry intends to review the withdrawal **within three years of the date of signature of Order W-TB-92/24** to ascertain whether it is appropriate to maintain the withdrawal in light of the status of efforts by Ontario, Canada and Kiashke Zaaging Anishinaabek to resolve the boundary claim;

I HEREBY ORDER:

Pursuant to subsection 35(1) of the Mining Act, that the **SURFACE AND MINING RIGHTS** of the areas outlined in red on the map attached as Schedule "A", situated in the English Bay and Havoc Lake Areas, Thunder Bay Mining Division, containing 1,226.44 hectares more or less, be **WITHDRAWN** from prospecting, mining claim registration, sale and lease.

This order comes into effect upon signing.

Date: July 8, 2025

Time: 8:36 am



Afsana Qureshi, Assistant Deputy Minister
Mines and Minerals Division

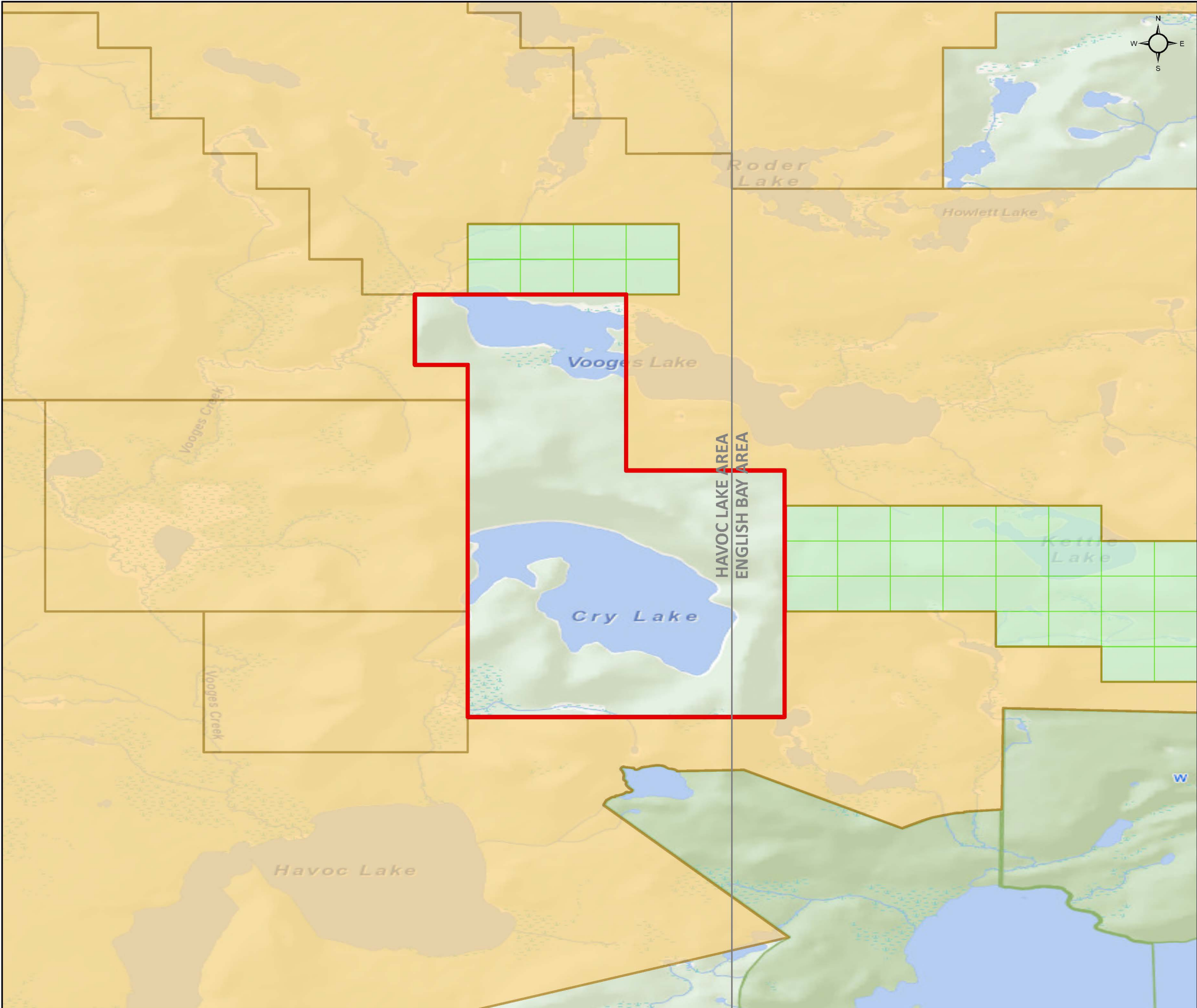
Copies:

Provincial Mining Recorder, MEM

Senior Manager, Mining Lands Section, MEM

Director, Indigenous Consultation and Partnerships Branch, MEM



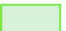
Provincial Lands Specialist, Crown Land Registry, MNR



W-TB-132/25

Havoc Lake and English Bay Areas
Thunder Bay Mining Division


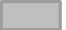
 **Withdrawal Area**

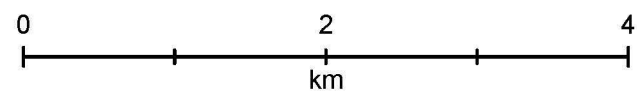
-  Withdrawal (Mining Only, Mining & Surface)
-  Withdrawal (Surface Only)
-  Mining Claims

Mining Land Tenure

-  Mining Land Tenure (Surface Only)
-  Mining Land Tenure (Mining Only)
-  Mining Land Tenure (Mining & Surface)

Non-Mining Land Tenure

-  Non-Mining Land Tenure (Surface Only)
-  Non-Mining Land Tenure (Mining & Surface)



Scale: 1:50,000
Date: 2025-07-02
Projection: NAD 1983 CSRS



© King's Printer for Ontario, 2025