

ORDER

SECTION 35, THE MINING ACT, R.S.O. 1990

ORDER NO. W-TB-177/24

WHEREAS pursuant to subsection 35(1) of the Mining Act, the Minister may, by order signed by him or her, withdraw from prospecting, mining claim registration, sale and lease any lands, mining rights or surface rights that are the property of the Crown, and the lands, mining rights or surface rights shall remain withdrawn until reopened by the Minister;

AND WHEREAS the Minister's authority to make an order under subsection 35(1) of the Mining Act has been delegated to staff of the Ministry of Mines including to the Assistant Deputy Minister, Mines and Minerals Division;

AND WHEREAS Long Lake #58 First Nation has asserted an Aboriginal title claim in respect of territory including, without limitation, the areas described below;

AND WHEREAS, although this withdrawal order will continue unless and until it is revoked by an order made pursuant to subsection 35(4) of the Mining Act, the ministry intends to review the withdrawal within three years of the date of signature of Order W-TB-110/22 to ascertain whether it is appropriate to maintain the withdrawal in light of the status of efforts by Ontario, Canada and Long Lake #58 First Nation to resolve the Aboriginal title claim;

I HEREBY ORDER:

Pursuant to subsection 35(1) of the Mining Act, that the SURFACE AND MINING RIGHTS of the areas outlined in red on the map attached as Schedule "A", situated in the Townships of Chipman, Goodwin, Fernow, and O'Meara, Thunder Bay Mining Division, containing 19,564.74 hectares more or less, be WITHDRAWN from prospecting, mining claim registration, sale and lease.

This order comes into effect upon signing.

Date: December 4, 2024

Time: 6:19 a.m.



For Afsana Qureshi, Assistant Deputy Minister
Mines and Minerals Division

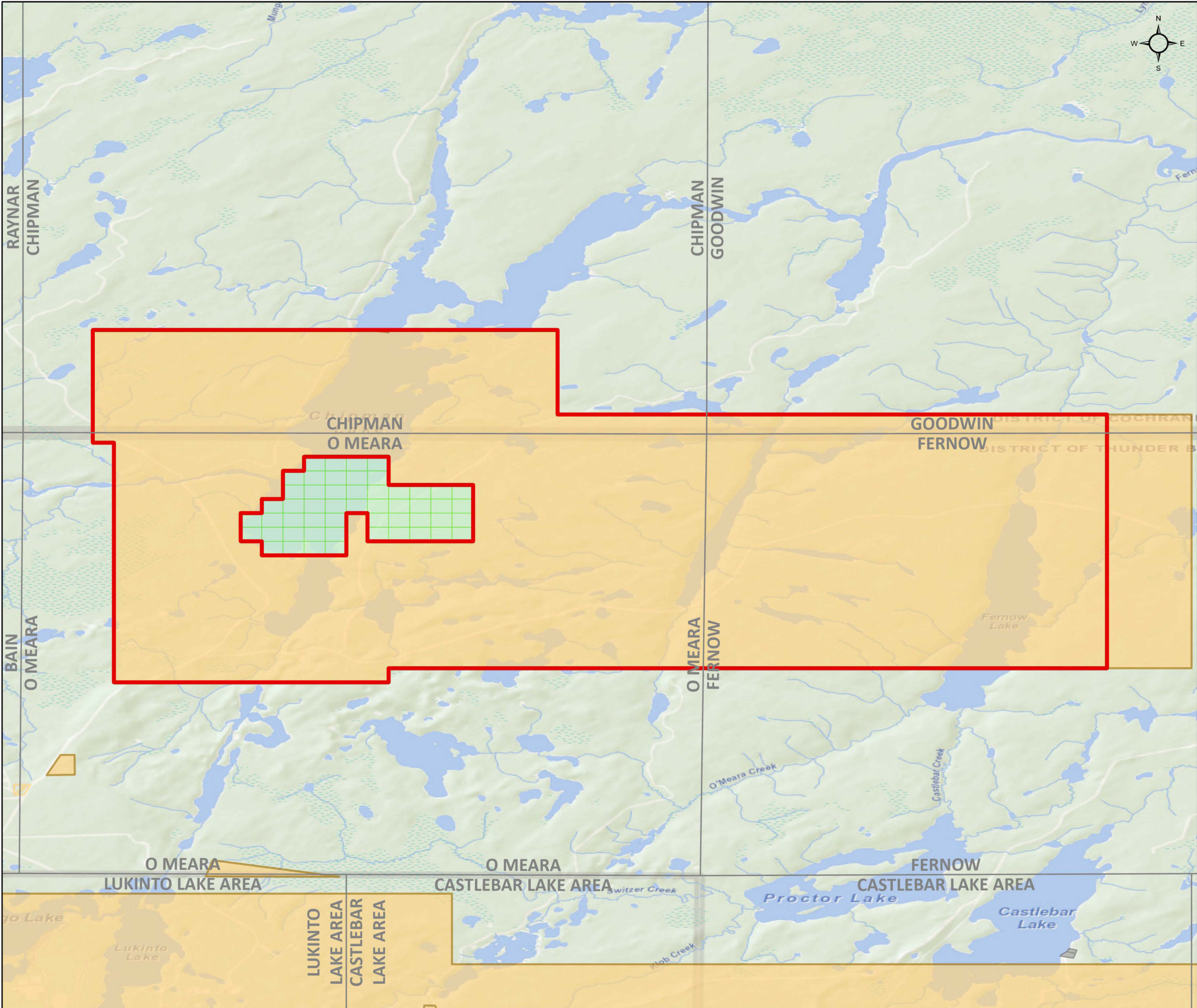
Copies:

Provincial Mining Recorder, MINES

Senior Manager, Mining Lands Section, MINES

Director, Indigenous Consultation and Partnerships Branch, MINES




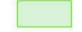
Provincial Lands Specialist, Crown Land Registry, MNRF



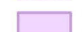
W-TB-177/24

Chipman, Goodwin, Fernow, and O'Meara Townships
Thunder Bay Mining Division



 **Withdrawal Area**

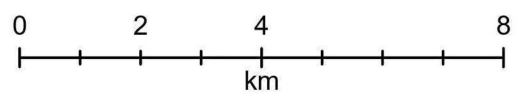
-  Withdrawal (Mining Only, Mining & Surface)
-  Withdrawal (Surface Only)
-  Order-in-Council
-  Mining Claims

Mining Land Tenure

-  Mining Land Tenure (Surface Only)
-  Mining Land Tenure (Mining Only)
-  Mining Land Tenure (Mining & Surface)

Non-Mining Land Tenure

-  Non-Mining Land Tenure (Surface Only)
-  Non-Mining Land Tenure (Mining & Surface)



Scale: 1:125,000
Date: 2024-11-15
Projection: NAD 1983 CSRS



© King's Printer for Ontario, 2024