

ORDER

SECTION 35, THE MINING ACT, R.S.O. 1990

ORDER NO. W-TB-201/24

WHEREAS pursuant to subsection 35(1) of the Mining Act, the Minister may, by order signed by him or her, withdraw from prospecting, mining claim registration, sale and lease any lands, mining rights or surface rights that are the property of the Crown, and the lands, mining rights or surface rights shall remain withdrawn until reopened by the Minister;

AND WHEREAS the Minister's authority to make an order under subsection 35(1) of the Mining Act has been delegated to staff of the Ministry of Mines including to the Director, Information and Lands Branch;

AND WHEREAS Netmizaaggamig Nishnaabeg has asserted an Aboriginal title claim in respect of territory including, without limitation, the area described below;

AND WHEREAS although this withdrawal order will continue unless and until it is revoked by an order made pursuant to subsection 35(4) of the Mining Act, the ministry intends to review the withdrawal periodically to ascertain whether it is appropriate to maintain the withdrawal in light of the status of efforts by Ontario, Canada and Netmizaaggamig Nishnaabeg to resolve the Aboriginal title claim;

I HEREBY ORDER:

Pursuant to subsection 35(1) of the Mining Act, that the SURFACE AND MINING RIGHTS of the area outlined in red on the map attached as Schedule "A", situated in the White Lake Area, Thunder Bay Mining Division, containing 21.31 hectares more or less, be WITHDRAWN from prospecting, mining claim registration, sale and lease.

This order comes into effect upon signing.

Date: December 16, 2024

Time: 3:54 PM



Carol Smith, Director
Information and Lands Branch



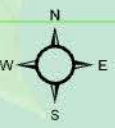
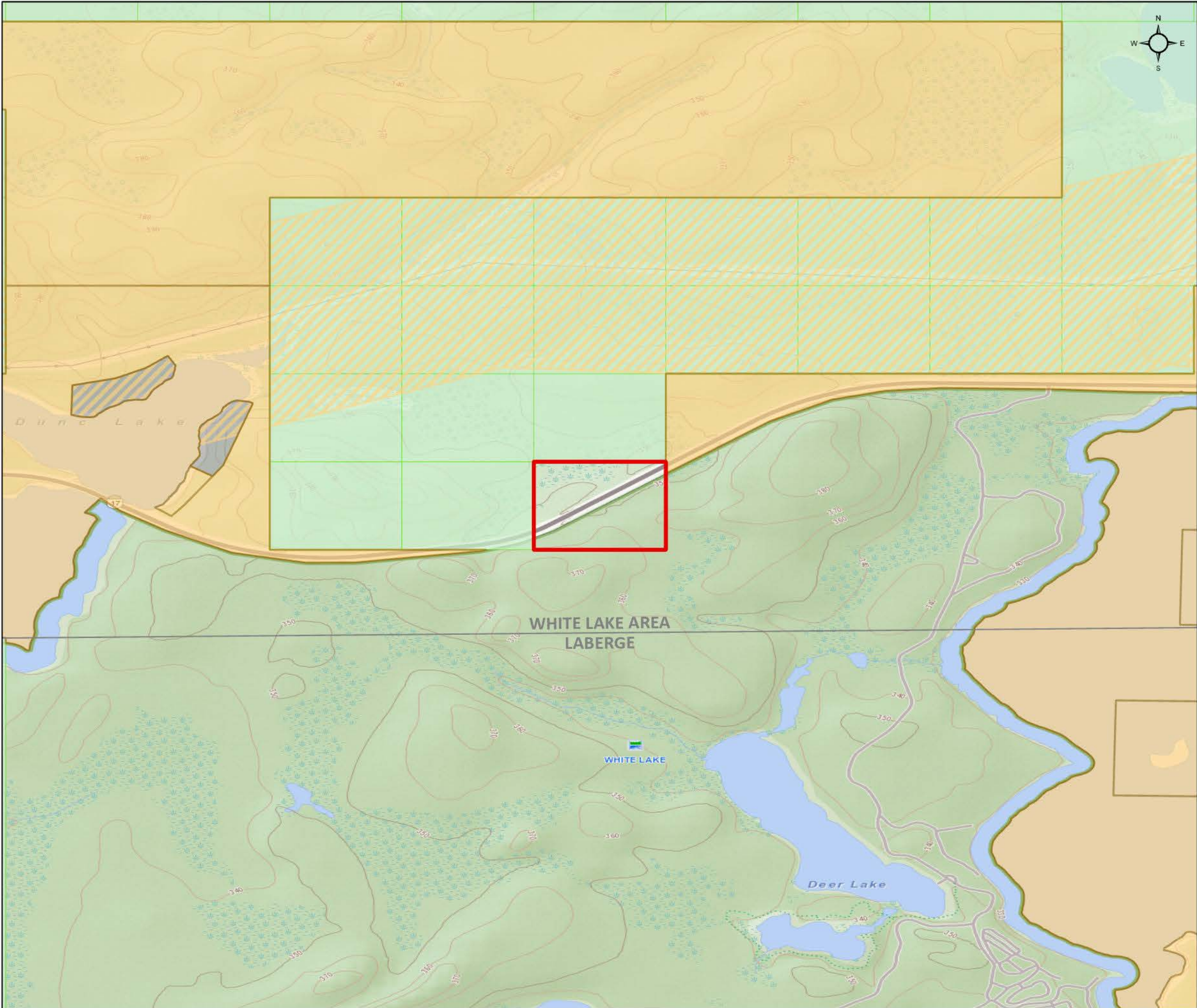
Copies:

Provincial Mining Recorder, MINES

Senior Manager, Mining Lands Section, MINES

Director, Indigenous Consultation and Partnerships Branch, MINES

Provincial Lands Specialist, Crown Land Registry, MNRF

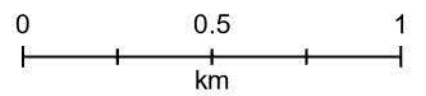


W-TB-201/24

White Lake Area
Thunder Bay Mining Division

Withdrawal Area: 21.31ha

- Withdrawal (Mining Only, Mining & Surface)
- Withdrawal (Surface Only)
- Order-in-Council
- Mining Claims
- Mining Land Tenure**
 - Mining Land Tenure (Surface Only)
 - Mining Land Tenure (Mining Only)
 - Mining Land Tenure (Mining & Surface)
- Non-Mining Land Tenure**
 - Non-Mining Land Tenure (Surface Only)
 - Non-Mining Land Tenure (Mining Only)
 - Non-Mining Land Tenure (Mining & Surface)



Scale: 1:20,000
Date: 12/16/2024
Projection: NAD 1983 CSRS



© King's Printer for Ontario, 2024